



Union Square Utility and Streetscape Improvements Study and Design

January 29, 2014



Somerville *by*
DESIGN

**PARSONS
BRINCKERHOFF**

Agenda

- ▶ 6:30-7:00 **Open House & Exhibits**
- ▶ 7:00-7:20 **Presentation**
 - Welcome and Introduction – Hayes Morrison
 - Project Overview – Rachel Burckardt
 - Project Update – Rachel Burckardt
 - Recap of Meeting #1–Joanne Frascella
 - Major Alternatives from Past Studies – Rachel Burckardt
 - Opportunities for Improved Access:
Pedestrian, Bicycle & Transit – Kristen Torrance
- ▶ 7:20-7:40 **Breakout Session**
- ▶ 7:40-7:55 **Q&A**
- ▶ 7:40-7:55 **Wrap up and Next Steps**



City of Somerville Team

- ▶ **Mayor Joseph A. Curtatone**
- ▶ **Ward 2 Alderman Maryann M. Heuston**
- ▶ **Ward 3 Alderman Robert McWatters**
- ▶ **Department of Public Works, Melissa Miguel,
Engineering**
- ▶ **Office of Strategic Planning & Development
Michael Glavin, Executive Director
Hayes Morrison, Transportation and Infrastructure**



Citizens Advisory Committee

- ▶ **Wig Zamore, Chairman**
- ▶ Joe Beckmann
- ▶ Susan Callahan
- ▶ Robyn Champion
- ▶ Mike Dacey
- ▶ Erik Fellingner
- ▶ Mimi Graney
- ▶ Gregory Jenkins
- ▶ Angelina Jockovich
- ▶ Ken Kelly
- ▶ Shaina Korman-Houston
- ▶ Karen Mancini
- ▶ Pat McCormick
- ▶ Erik Neu
- ▶ Philip Parsons
- ▶ Molly Rubenstein
- ▶ Kat Rutkin
- ▶ Rebecca Schrumm
- ▶ Gordon Wong





Project Overview



Union Square Utility and Streetscape Improvements Study and Design

Somerville by
DESIGN

The PB Team

Parsons Brinckerhoff	Project Management Civil, Structural & Traffic Engineering Public Outreach
Team Better Block	Experiential Community Engagement
Crosby Schlessinger Smallridge, Inc.	Streetscape & Urban Design
Toole Design Group, Inc.	Bicycle & Pedestrian Facilities
Bryant Associates, Inc.	Surveying
PEER Consultants, Inc.	LSP Services

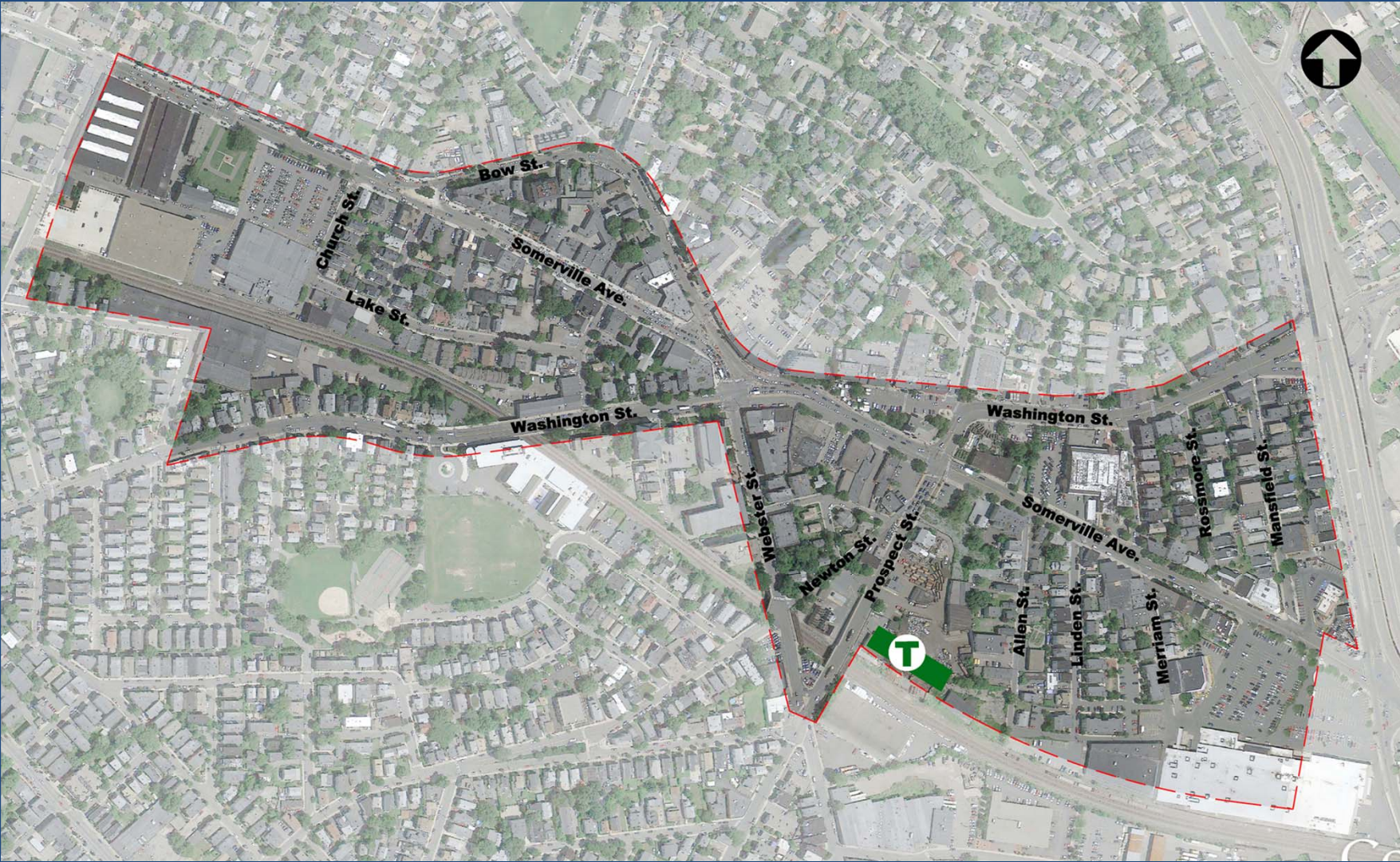


Project Objectives

- ▶ Recognize the unique history of Union Square
- ▶ Build on foundation of previous work
- ▶ Coordinate with ongoing and future projects
- ▶ Develop utility and transportation solutions
- ▶ Integrate all modes of transportation (pedestrians, bicyclists, transit, vehicles)
- ▶ Design for improvements that can be built



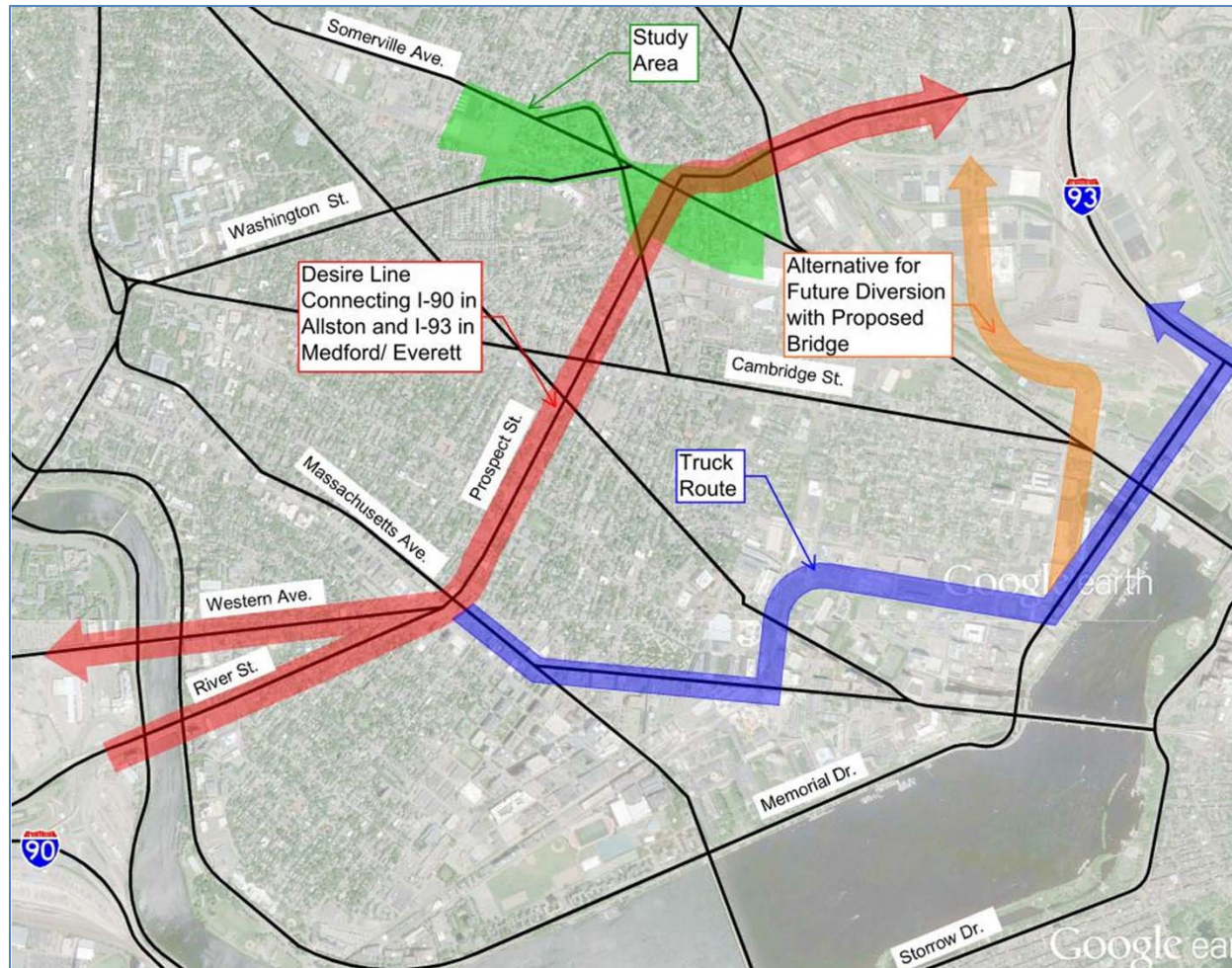
Study Area



Union Square Utility and Streetscape Improvements Study and Design

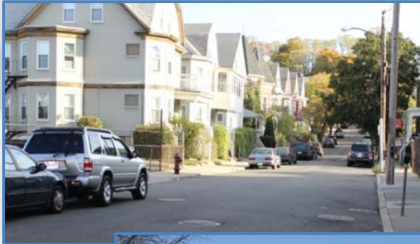
Somerville *by*
DESIGN

Regional Connectivity



Scope

- ▶ Utilities
- ▶ Transportation
- ▶ Public Space
- ▶ Development Impacts
- ▶ Public Outreach



Process: Utilities



- ▶ Identify Deficiencies
- ▶ Develop Alternatives
- ▶ Utility Public Meeting #1
- ▶ Modeling and Analysis
- ▶ Evaluate Alternatives
- ▶ Draft Recommendations
- ▶ Utility Public Meeting #2
- ▶ Preliminary Design



Process: Streetscape

(Transportation and Public Space)



- ▶ Review/Critique Previous Studies
- ▶ Identify Opportunities and Constraints
- ▶ Identify Placemaking Opportunities
- ▶ Develop Transportation Options



Public Outreach

Preliminary Streetscape Design

Nov 2013

Dec 2014

○ Meeting #1: Nov 18, 2013

● Meeting #2- Jan 29, 2014

● Meeting #3- Early Spring 2014

○ Meeting #4- Summer 2014

● Meeting #5- Fall 2014

● Meeting #6-
Winter 2014

Ongoing Advisory Committee Meetings/Coordination



Union Square Utility and Streetscape Improvements Study and Design

Somerville *by*
DESIGN



Project Update



Union Square Utility and Streetscape Improvements Study and Design

Somerville by
DESIGN

Project Update

- ▶ **Aerial Survey – Complete**
- ▶ **Ground Survey – In Progress**
- ▶ **Borings (Soils Sampling and Testing) – Start in February**
- ▶ **Review of Existing Utility Data – Ongoing**



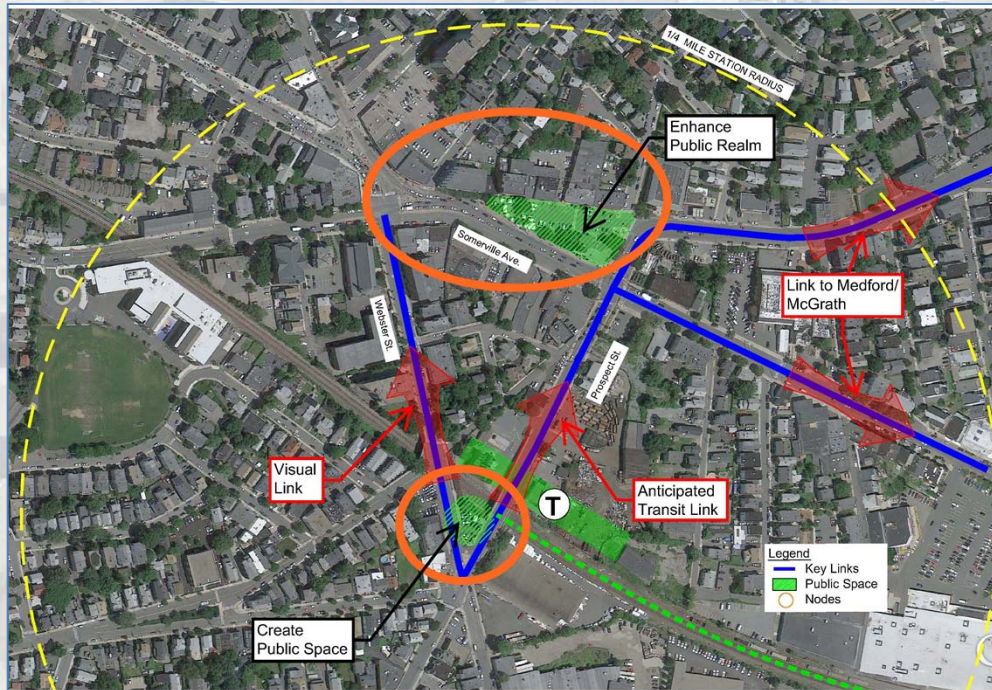
Recap of Meeting #1



Union Square Utility and Streetscape Improvements Study and Design

Somerville *by*
DESIGN

Issues and Opportunities



▶ Connections

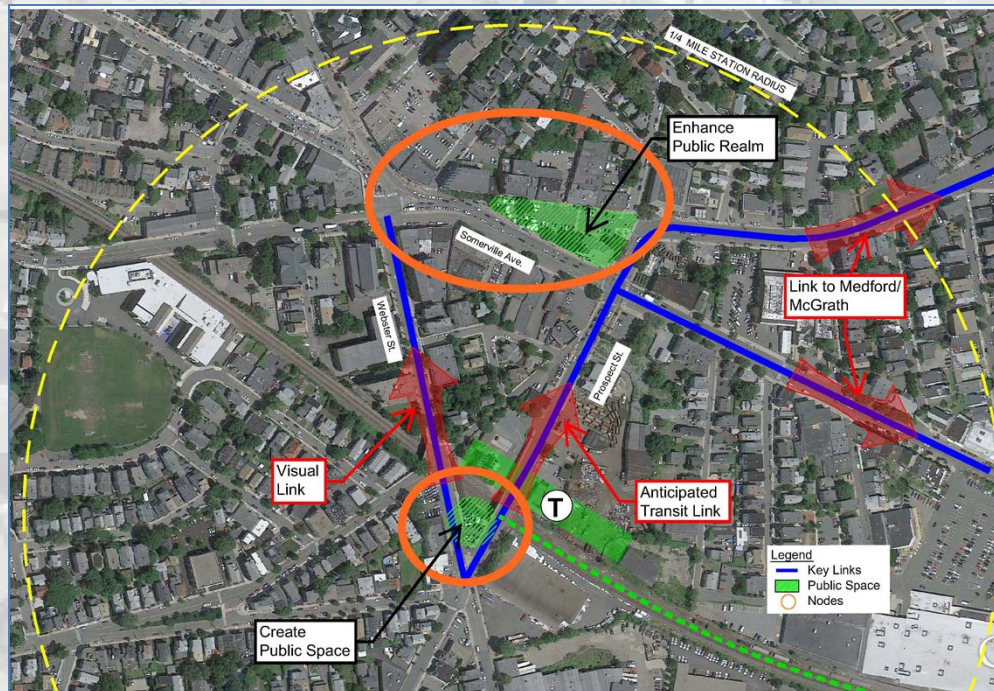
- Pedestrian
- Bicycle Access
- Bus Connections
- Traffic

▶ Community Building

- Public Space
- Neighborhood Activity
- Business
- Future Development



Issues and Opportunities



- ▶ **Station Integration**
 - Access
- ▶ **Infrastructure Development**
 - Stormwater
 - Sewer System
 - Water Supply
- ▶ **Sustainability**
 - Encourage alternate modes of travel
 - Reduce reliance on automobiles



Summary of Comments: Connections

- ▶ **Make Webster and Prospect two ways**
- ▶ **Cut down on through traffic**
- ▶ **Increase bike flow/safety/accommodations**
- ▶ **Improve bus connections/routing and integrate with station**
- ▶ **Less parking, more public space**
- ▶ **Improve pedestrian access and crosswalks**



Summary of Comments: Community Building, Public Space and Streetscape

- ▶ **Preserve / promote local businesses**
- ▶ **Expand plaza and public event space**
- ▶ **More street trees**
- ▶ **More play areas and pocket parks**
- ▶ **Buildings should connect to streets**
- ▶ **Activate streets**
- ▶ **More attractive signage**



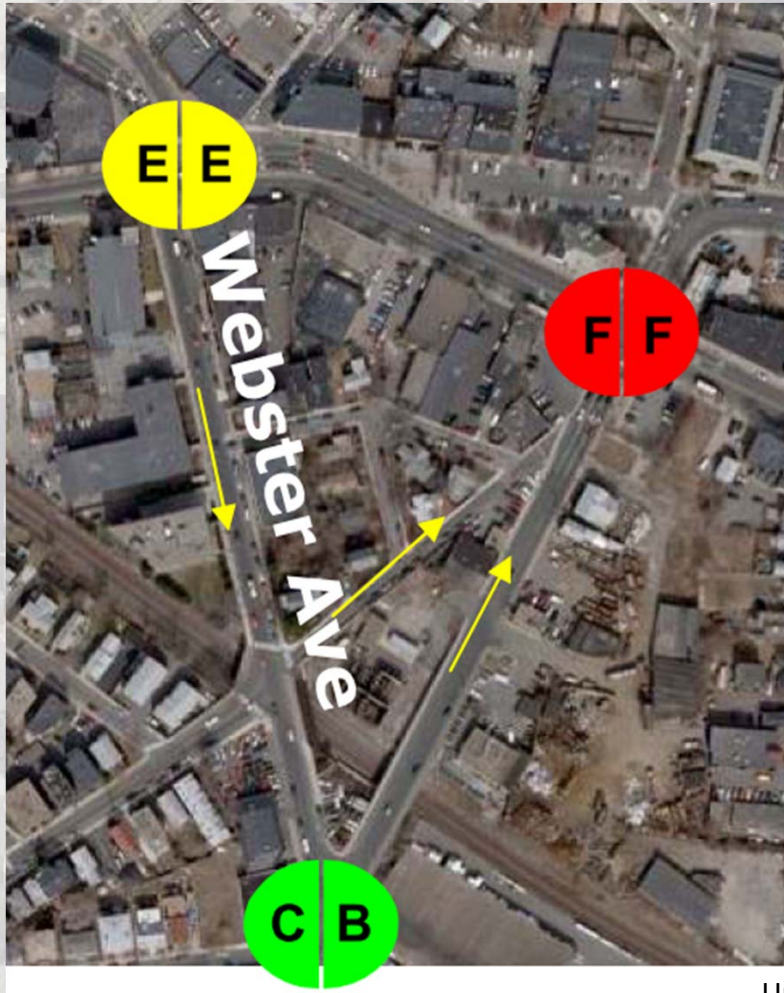


Major Alternatives from Past Studies

- Prospect & Webster alternatives
 - Plaza expansion alternatives



Webster / Prospect: One-Way



- ▶ Poor Levels of Service
- ▶ Indirect routing of through traffic
- ▶ Focuses traffic to pass through Square

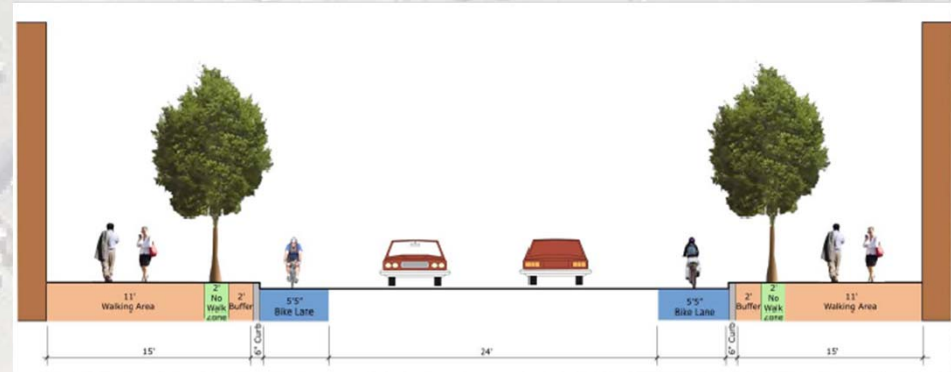
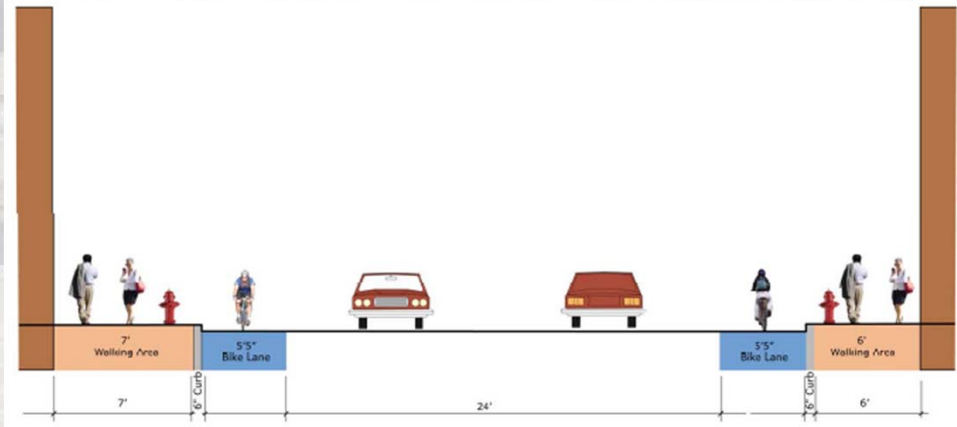
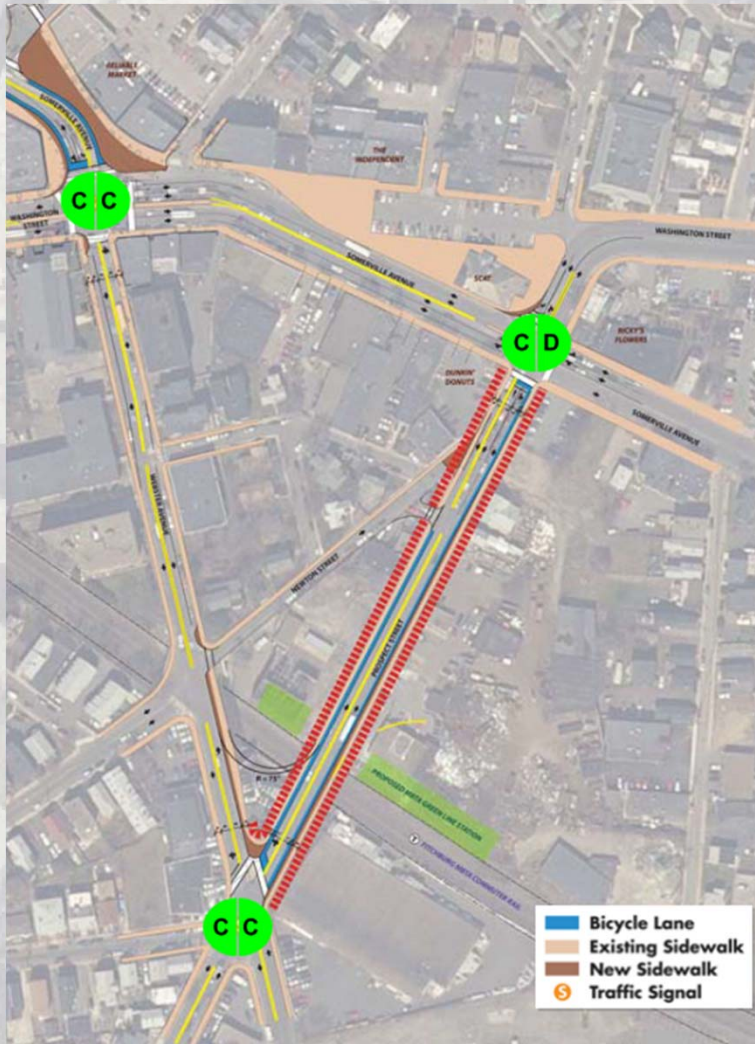
Union Square Roadway & Streetscape Improvements



Union Square Utility and Streetscape Improvements Study and Design

Somerville
by
DESIGN

Webster / Prospect: Two-Way



Prospect Street Cross Section with and without widened sidewalks

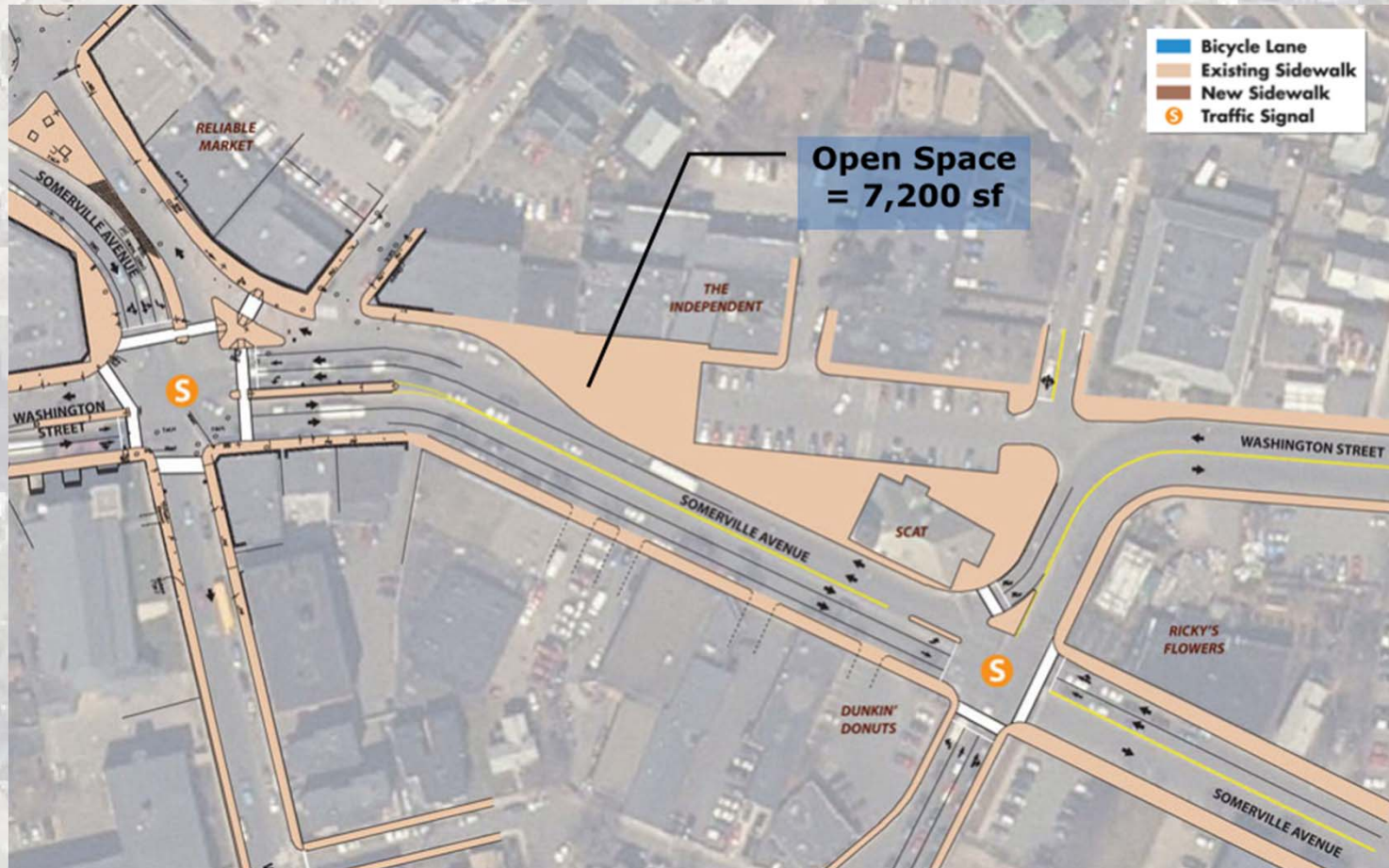
Union Square Roadway & Streetscape Improvements



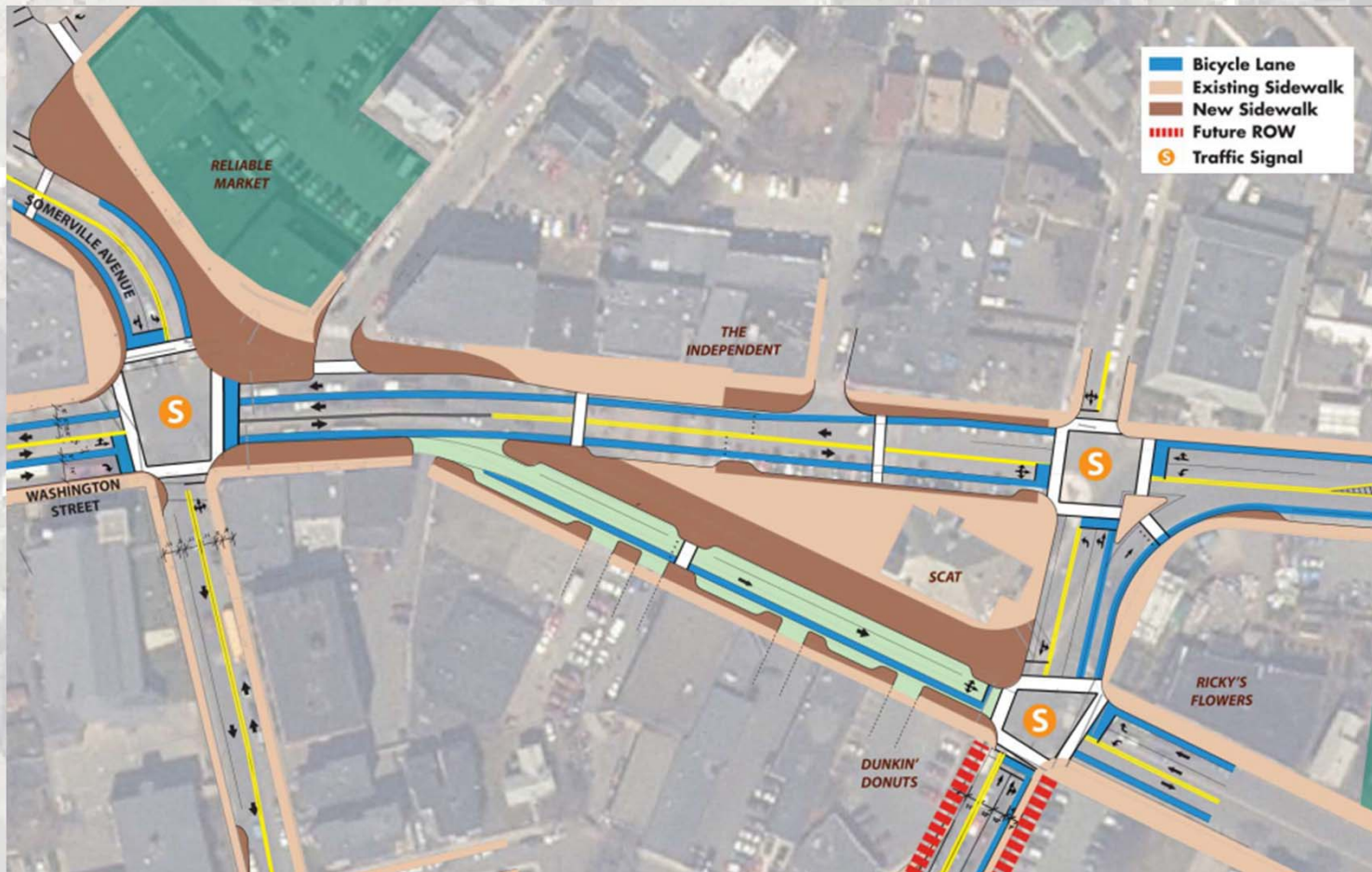
Union Square Utility and Streetscape Improvements Study and Design

Somerville *by* DESIGN

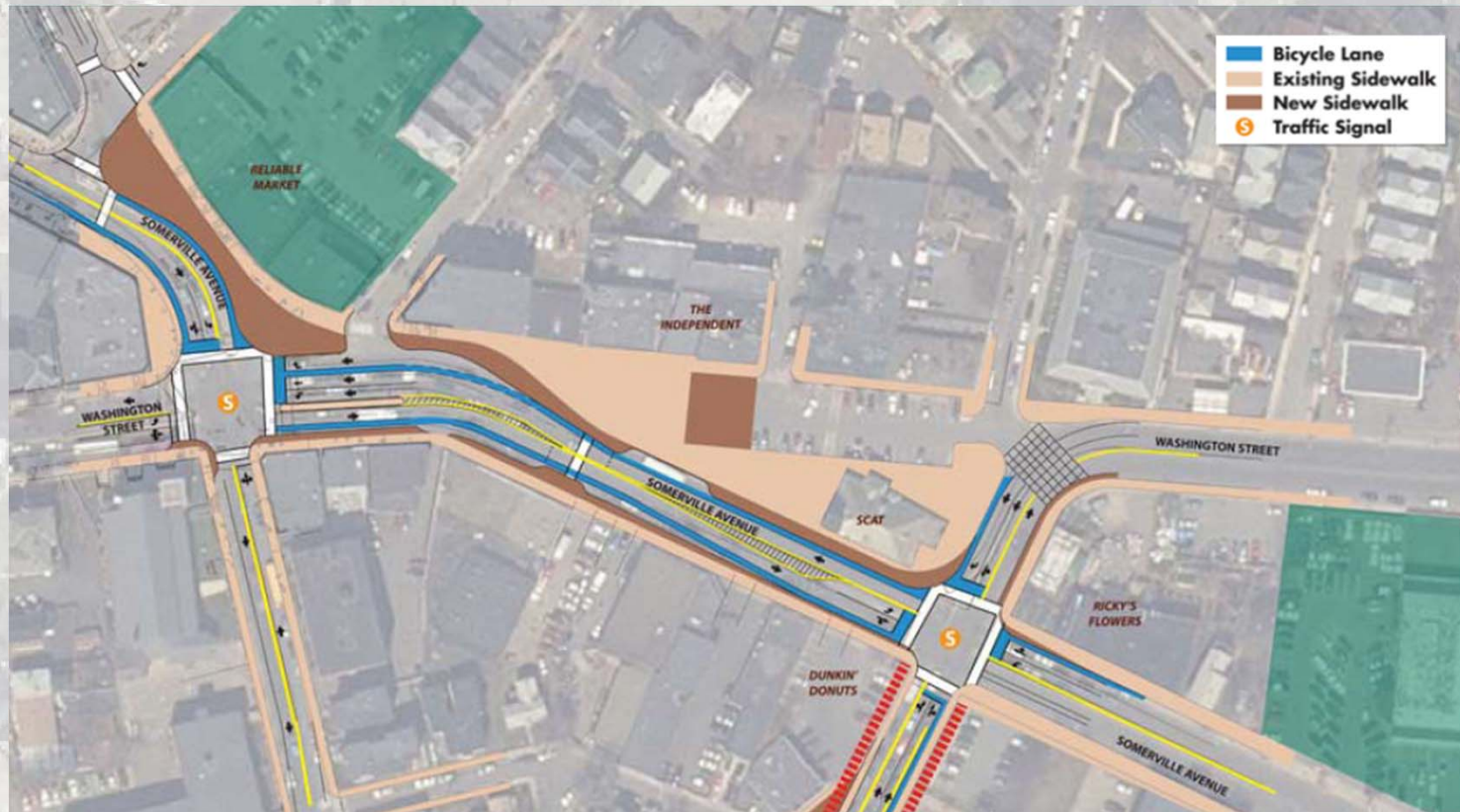
Plaza Alternatives: Existing



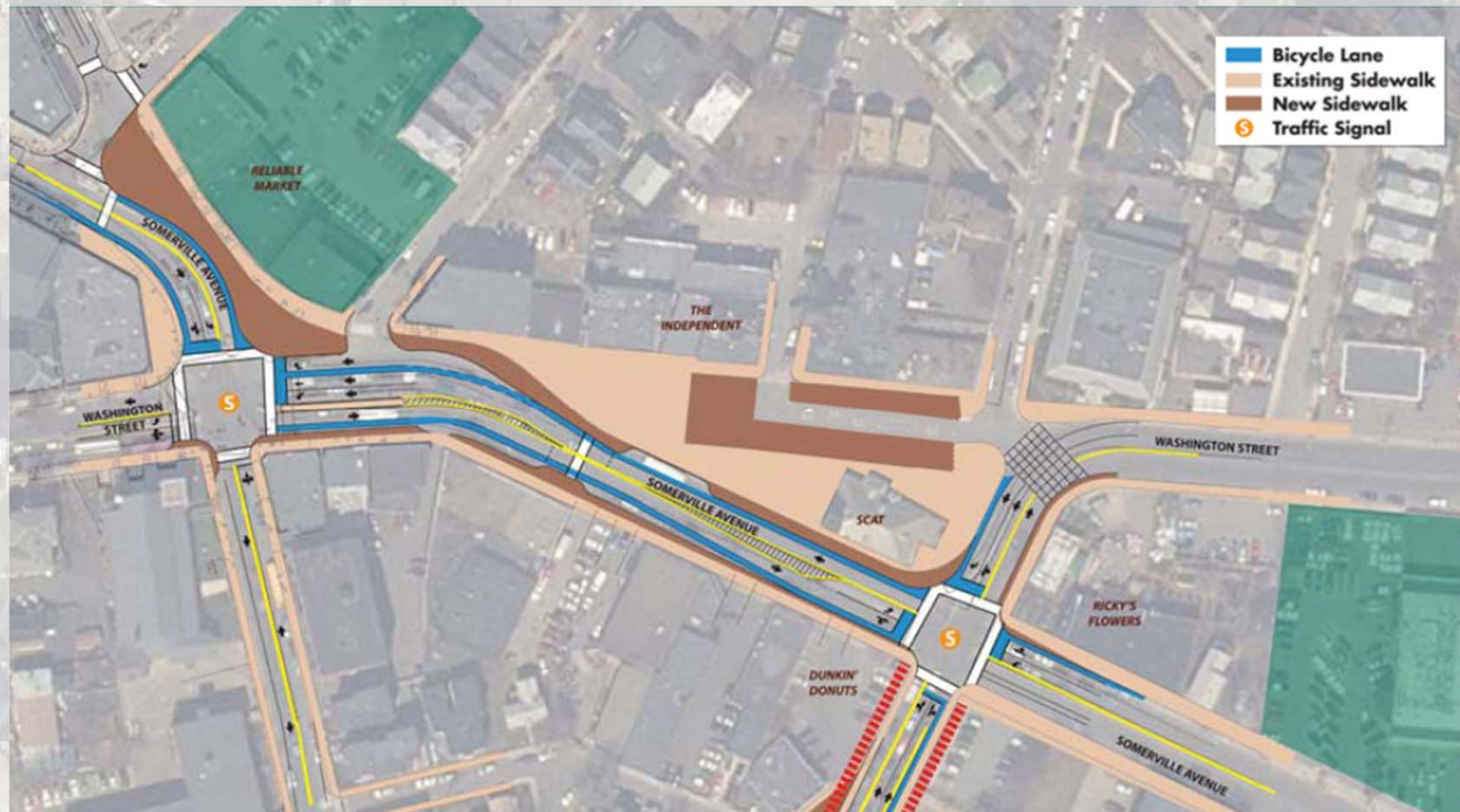
Plaza Alternatives: 2-Way Washington + Woonerf



Plaza Alternatives: Expand Existing 1



Plaza Alternatives: Expand Existing 2



Union Square Utility and Streetscape Improvements Study and Design

Somerville *by*
DESIGN



Opportunities for Improved Access: Pedestrian, Bicycle & Transit



Union Square Utility and Streetscape Improvements Study and Design

Somerville *by*
DESIGN

Difficult Pedestrian Crossings



Google earth



Union Square Utility and Streetscape Improvements Study and Design

Somerville
by
DESIGN

Improved Pedestrian Crossing



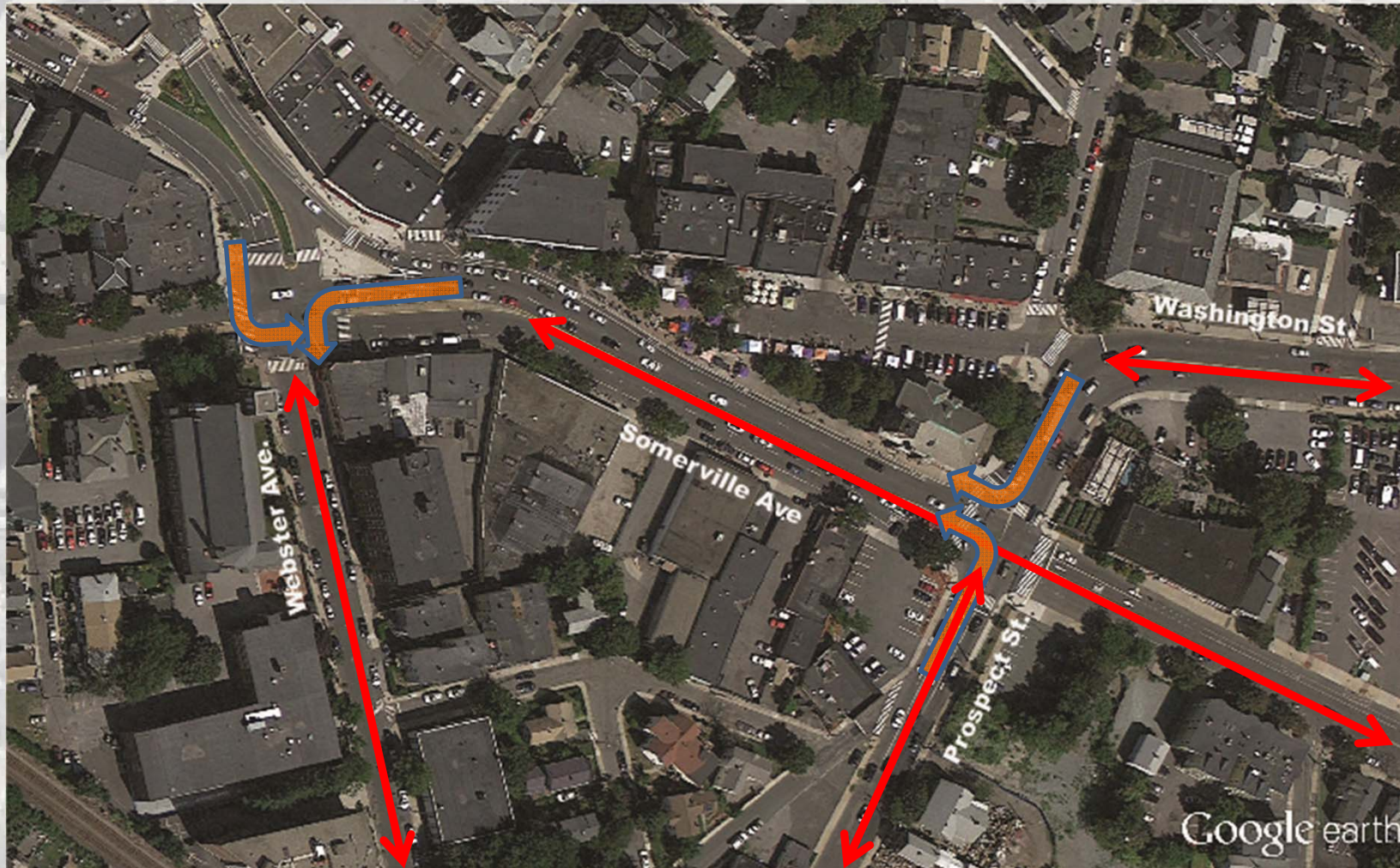
▶ **Raised Crosswalks**



▶ **Curb Extensions**



Difficult Bicycle Connections:



▶ **Connections**

▶ **Turning Movements**

Union Square Utility and Streetscape Improvements Study and Design



Somerville *by*
DESIGN

Improved Bicycle Connection

- **Cycle Tracks**
 - Sidewalk Level
 - Street Level
- **Buffered Bicycle Lanes**
- **Bike Lanes with Back-in Angle Parking**



Improved Bicycle Parking

▶ On-Street Bicycle Parking

- “Bike Corrals”
- 10-20 Bicycles
- Can be placed where parking is removed for sight lines



Difficult Connections: Transit

- ▶ Only 2 Blocks from Square
- ▶ Lack of Visual Orientation



Improved Connections: Transit



Webster Avenue route



Prospect Street route



Breakout Session

- ▶ **Share with us your ideas for Union Square!**
- ▶ **5 tables:**
 - One-way vs. Two-way Prospect & Webster
 - Plaza Options
 - Improving Pedestrian Connections
 - Improving Bicycle Connections
 - Improving Transit Connections





Q&A

Questions?



Union Square Utility and Streetscape Improvements Study and Design

Somerville by
DESIGN

Schedule

▶ Utilities:

- Analysis of Existing Conditions - Winter 2014
- Develop Alternatives – Spring 2014

▶ Streetscape:

- Evaluate Previous Recommendations – Winter 2014
- Identify Constraints and Opportunities – Winter 2014
- Develop Alternatives – Spring 2014

▶ Public Outreach: Ongoing through 2014

- Launch Advisory Committee
- Next Public Meeting in early Spring



Next Steps

▶ Utilities:

- Analysis of Existing Conditions
- Develop Alternatives

▶ Streetscape:

- Evaluate Previous Recommendations
- Identify Constraints and Opportunities

▶ Public Outreach:

- Launch Advisory Committee
- Public Meeting #3 with Team Better Block in early Spring

Contact Us

Hayes Morrison

City of Somerville

Director of Transportation and
Infrastructure

hmorrison@somervillema.gov

617-625-6600 x2522

