

Somerville *by*
DESIGN



Green Spaces &
Community Places

City Team:

Hayes Morrison, Director Transportation & Infrastructure

Luisa Oliveira, Senior Planner for Landscape Design

Rachel Kelly, Green Infrastructure Planner

Emily Monea, CPA Manager

Sarah Spicer, Senior Transportation Planner

Dan Bartman, Senior Planner/Zoning

Arn Franzen, Director of Parks and Open Space

Brad Rawson, Senior Neighborhood Planner

Tonight's Agenda:

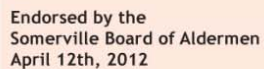
6:30-7 pm Introduction

7-7:40 pm Discussion Groups

7:40-8 pm Report out: tell us
your ideas.



**City of Somerville, Massachusetts
Comprehensive Plan | 2010-2030**



Adopted by the
Somerville Planning Board
April 19th, 2012

***Somerville: an Exceptional Place to
Live, Work, Play, and Raise a Family***



The SomerVision Numbers



30,000 New Jobs as part of a responsible plan to create opportunity for all Somerville workers and entrepreneurs



125 New Acres of Publicly-Accessible Open Space
as part of our realistic plan to provide high-quality
and well-programmed community spaces



6,000 New Housing Units - 1,200 Permanently Affordable as part of a sensitive plan to attract and retain Somerville's best asset: its people.



50% of New Trips via Transit, Bike, or Walking as part of an equitable plan for access and circulation to and through the City.



85% of New Development in Transformative Areas as part of a predictable land use plan that protects neighborhood character

Somerville Open Space and Recreation Plan 2008-2013



Mayor Joseph A. Curtatone

DATA:

1. Inventories:

- Open Space
- Fields
- Comm Gardens
- ADA

2. Public input:

- Public Meetings
- Survey
- SbD Blog
- Art Project
- Open Space, Open House

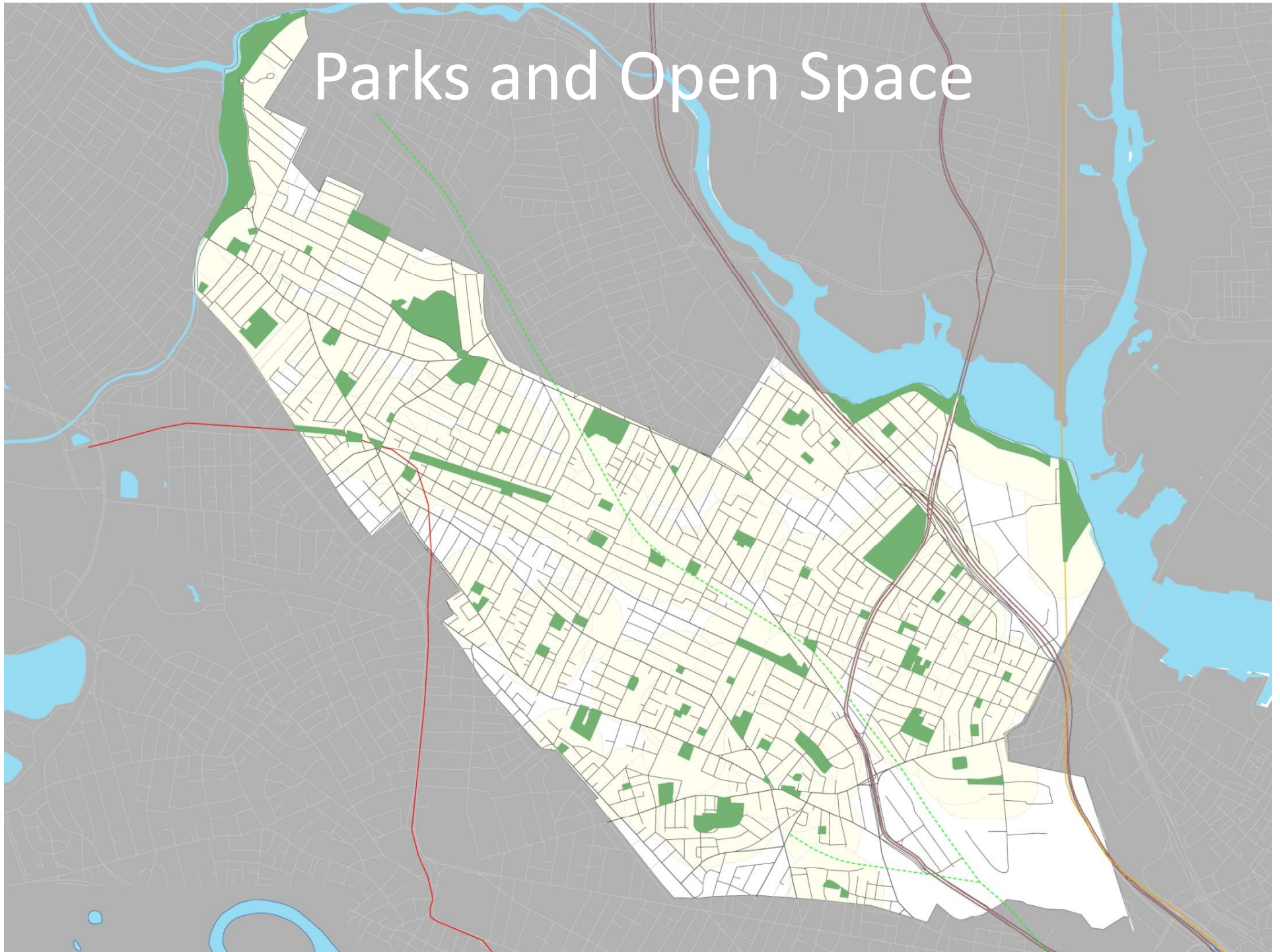
More opportunities for engagement:

- Meeting 2 on March 11 in W Somerville
- Somerville by Design Blog:
somervillebydesign.com

Spring 2014:

- Survey
- Public art project
- Open Space, Open House

Parks and Open Space











1. Playgrounds

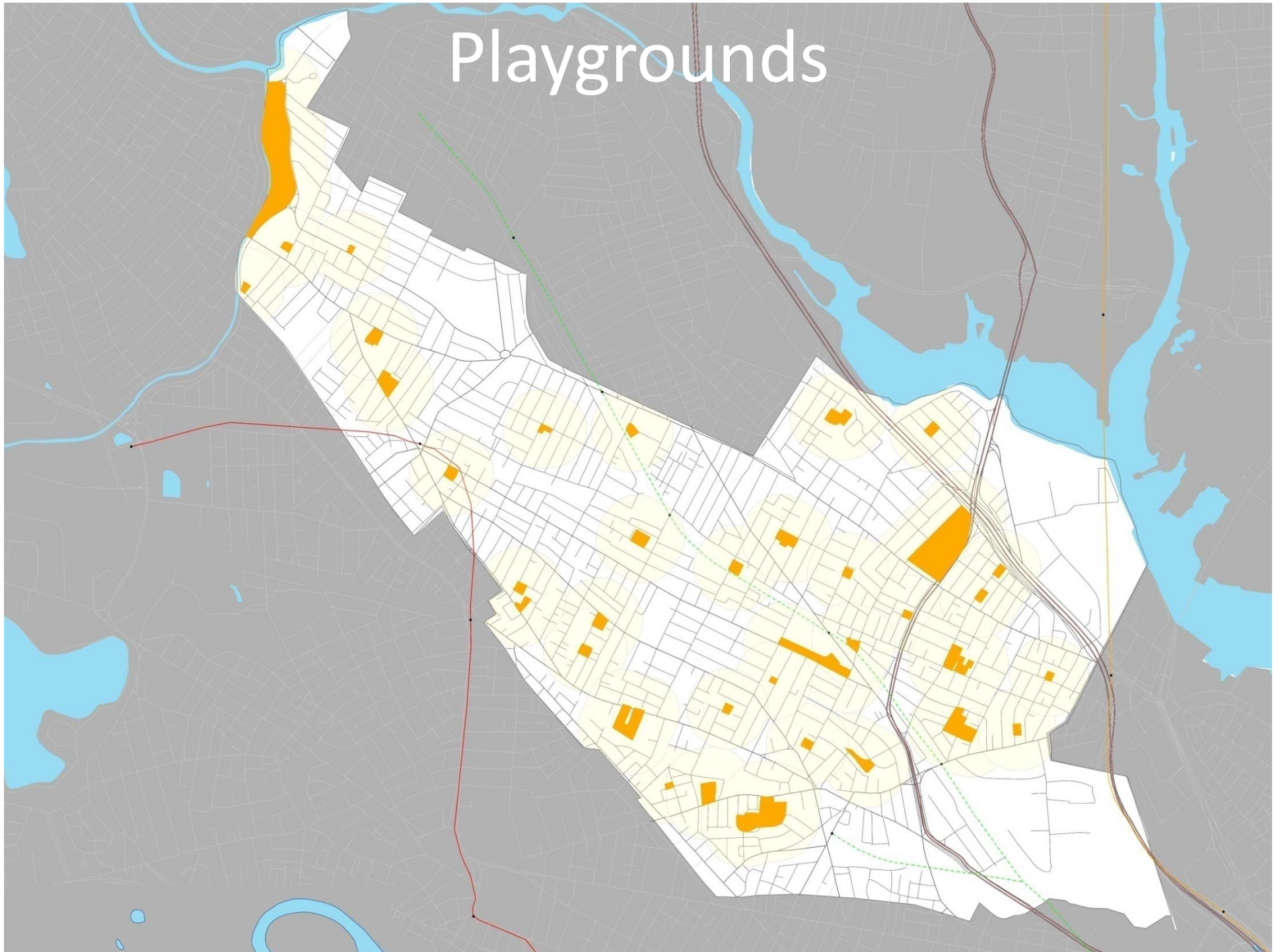
2. Community Gardens

3. Plazas & Streetscapes

4. Recreational Fields

1. Playgrounds

Playgrounds



Playgrounds: Data

36 Playgrounds

3,620 elementary-school-age children

1 playground for every 100 children

4.6 playgrounds per 10,000 residents

50% (15/30) projects renovated since
2004 are playgrounds

Children develop through play.

Playgrounds: Analysis

- Well served: within .25 miles (5 min walk)
- Traditional: play equipment, court games, divided age areas
- Opportunities
Schoolyards, unstructured play, public play like “playborhoods”, shared-use spaced, creative play

Playgrounds: Innovation



Mason Pilot Elementary School



SFU Burnaby, British Columbia



Garden City British Columbia



Alexander Kemp, Cambridge

2. Community Gardens

Community Gardens

TUFTS

BIKEWAY

ALBION

MORSE KELLEY

AVON

OSGOOD

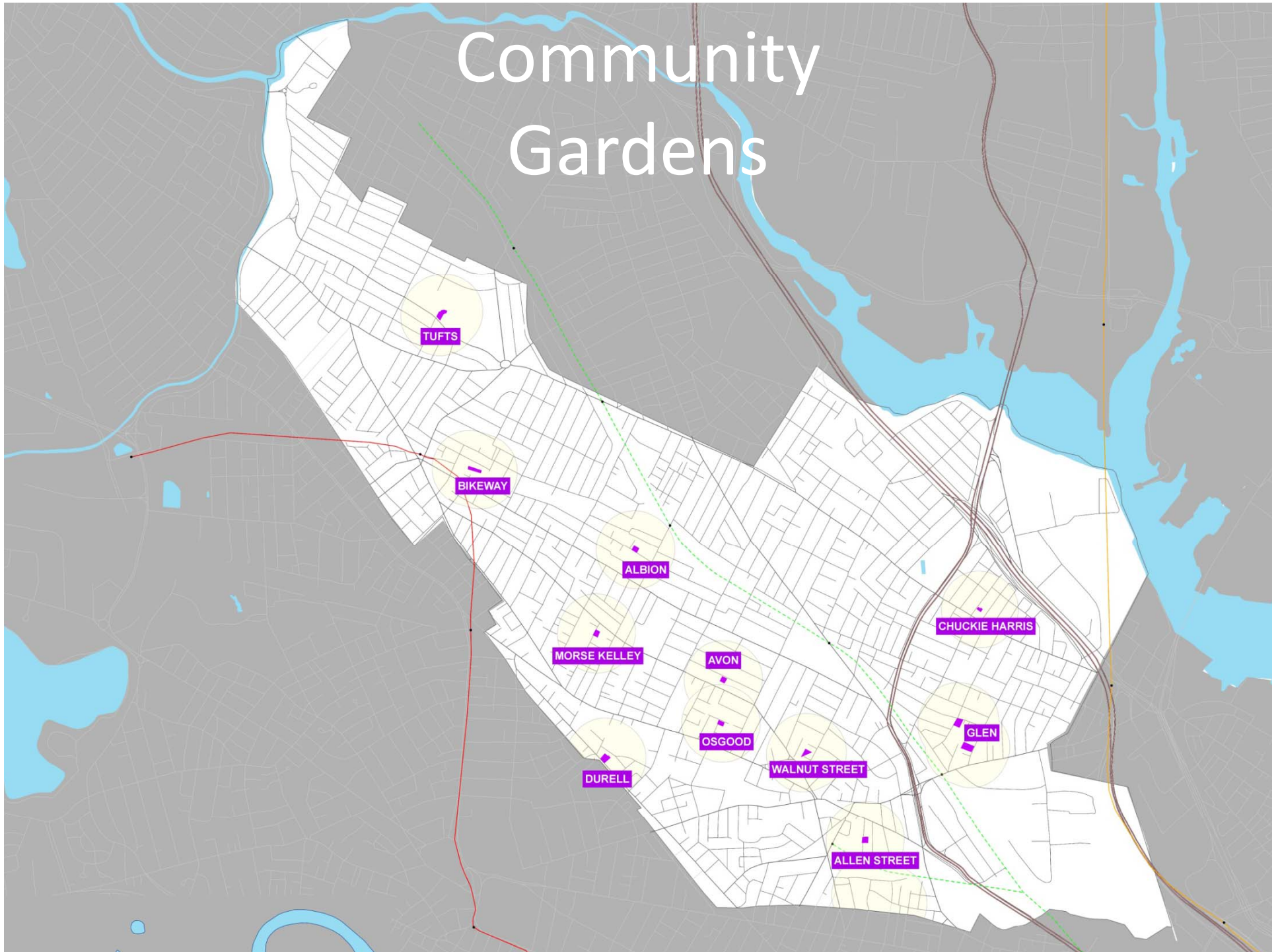
DURELL

WALNUT STREET

ALLEN STREET

CHUCKIE HARRIS

GLEN



Community Gardens: Data

- Number of gardens: **11**
- Number of plots: **225**
- Acres: **0.82** / Square feet: **35,700**
- People on waitlists: **457**
- Average annual fee: **\$23**
- Time limit on plot: **none**
- Plot size: **vary, some as large as 170 square feet**

Community Gardens: Analysis

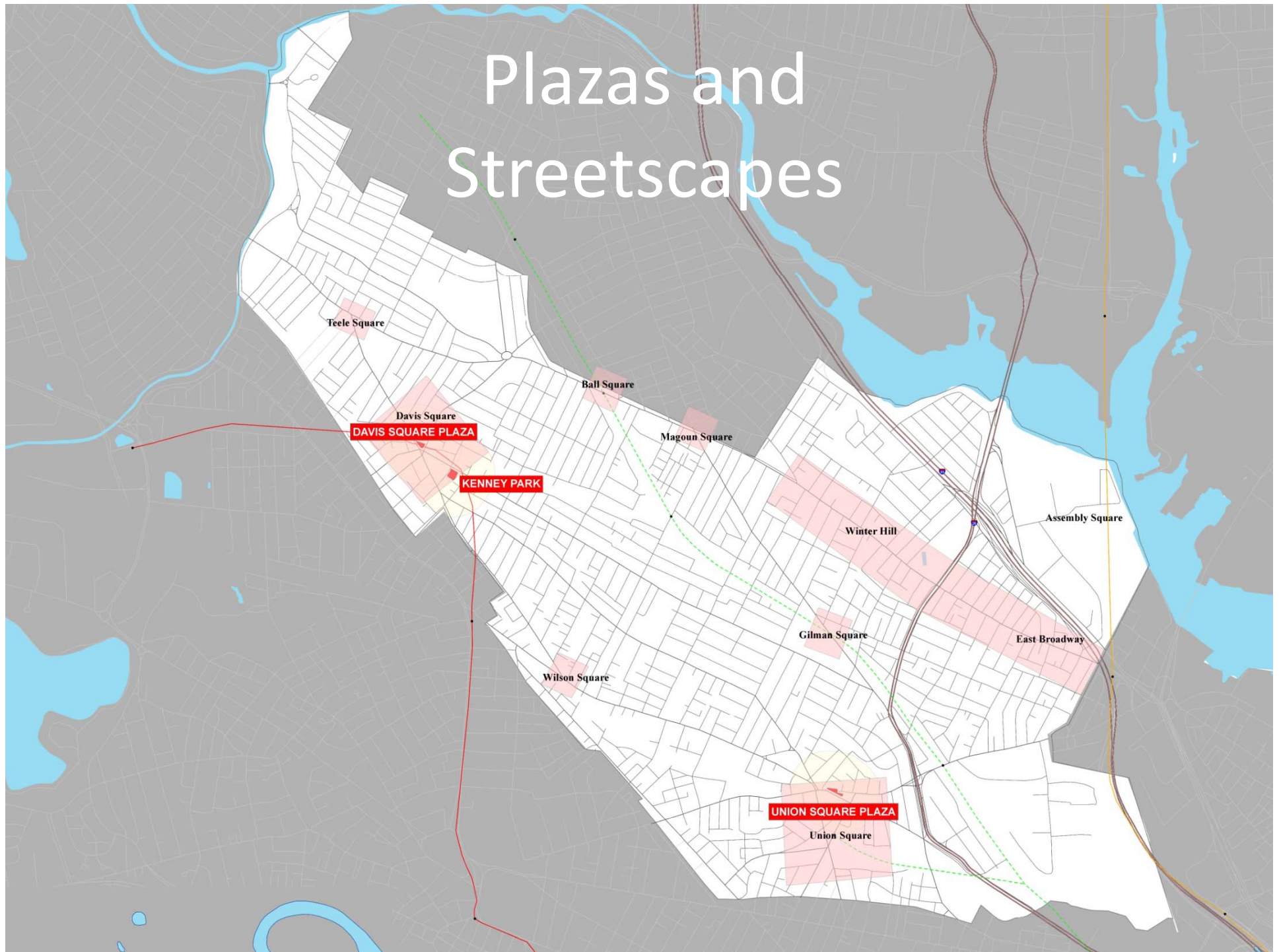
- Demand exceeds supply
- Low turnover
- “One-size-fits-all” system
- Limited community benefit
- Underutilized and/or poorly maintained plots
- Underutilized space in gardens

Community Gardens: Innovation



3. Plazas & Streetscapes

Plazas and Streetscapes



Plazas and Streetscapes: Data

In addition to Somervision, documented via NSRP, Safe-Starts, and Complete Streets

In a 4 square mile city, we have...

- 93 miles of roadway
- 7 squares, ~15 neighborhoods
- 6.5 million sf of sidewalks

*How many do you frequent
regularly?*

In which do you like to spend time?

If so – where?

Plazas & Streetscapes: Analysis

- Small spaces, rights of way
- Need for flexibility
- Maintenance
- Need to accentuate existing + create in new areas
- Underutilized or car-centric space
- Management of space and events, programming



Plazas and Streetscapes – Innovation



Pop up plazas



Shared Space



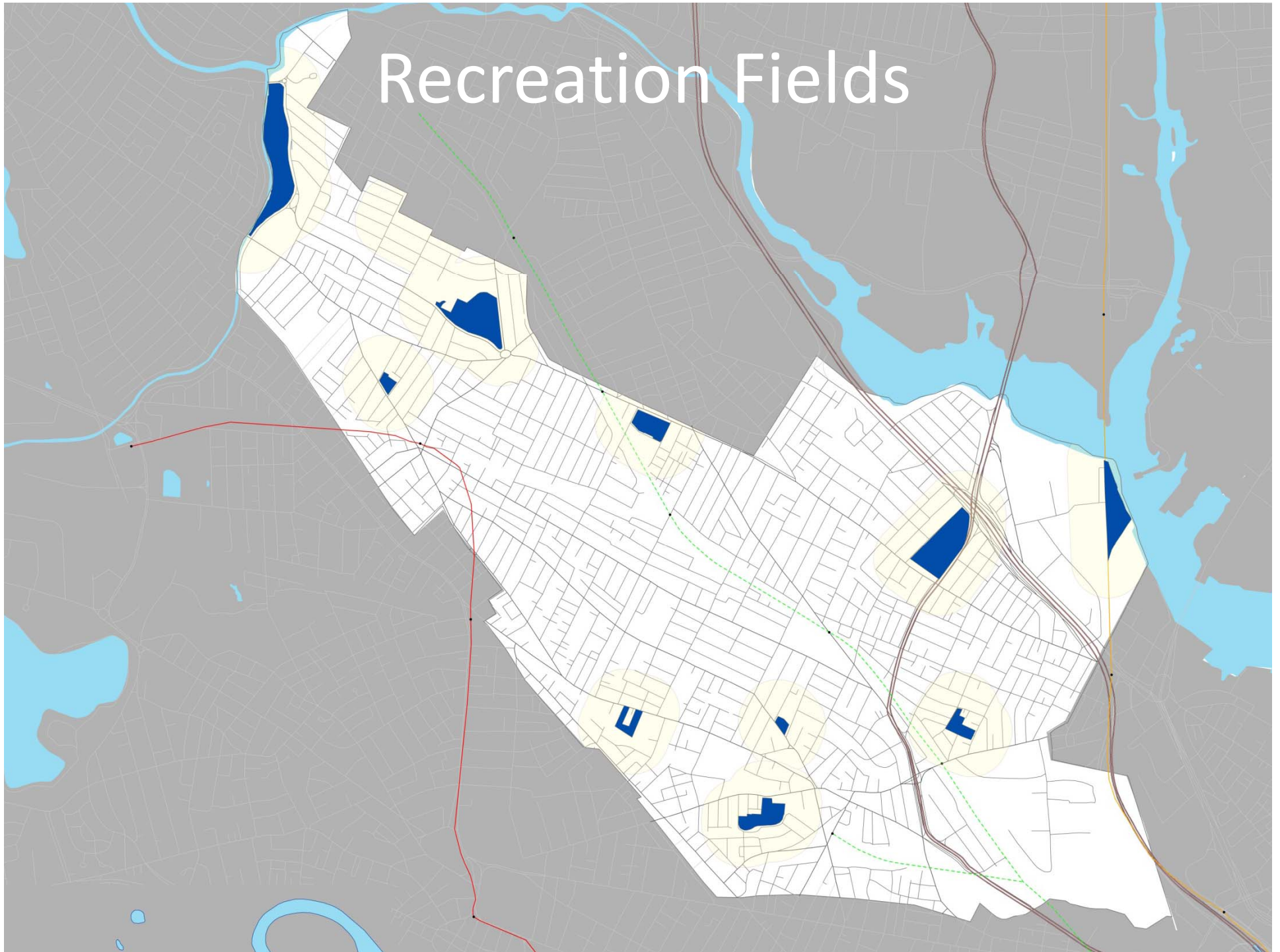
Pocket Spaces



Programming

4. Recreational Fields

Recreation Fields



Recreational Fields: Data

- 10 sites with city recreation fields (6 city parks, 3 state parks, and 1 field at Tufts)
- 18 fields total (16 natural grass fields, 2 artificial turf fields)
- 8,200 recreation events scheduled annually
- 1,953 families in recreation programs, pre-schoolers, adolescents, and adults
- 1/3 of uses are on turf fields, 2/3 are on natural grass fields
- 4 parks have lighting

Recreational Fields: Analysis

- Significant community benefit but limited availability
- Quality fields cannot be sustained with existing use patterns
- Natural grass fields *average* 430 events (should not exceed 250)
- Artificial turf fields accommodate 1200 events annually
- 3 largest open spaces with fields owned by State
- Lighting extends programming hours



Recreational Fields – Innovation



Ideas? Solution? Let's discuss.

1. Playgrounds

2. Community Gardens

3. Plazas & Streetscapes

4. Recreational Fields

Ideas? Solutions?

Let's discuss.

More opportunities for engagement:

- Meeting 2 on March 11 in W Somerville
- Somerville by Design Blog:
somervillebydesign.com

Spring 2014:

- Survey
- Public art project
- Open Space, Open House



Somerville *by*
DESIGN

somervillebydesign.com