



DEC. 12-13, 2015

WINTER HILL BETTER BLOCK



Table of Contents

	Acknowledgments
01	Introduction
02	Neighborhood Planning/ Methodology
03	Why Better Block?
04	Concept Plann
05	Community Workshops
06	Schedule of Events
07	Infrastructure Prototypes
08	Public Life Results
09	Policy Implications
10	Goals for the Next Event
11	Next Steps
Appendix I	Ideas For Future Better Blocks
Appendix II	Recipes

Copyright 2016 ©
Team Better Block

For a list of any errors or omissions found subsequent to
printing please see the website

All rights are reserved.
No part of this publication may be reproduced, stored in
a retrieval system or transmitted in any form or by any
means, electronic, mechanical, photocopying, recording or
otherwise, without prior permission of Team Better Block

Acknowledgements

Team Better Block is an international quality of life consulting firm that assists communities with assembling their resources to prototype infrastructure improvements, test business and programming ideas and make policy adjustments to support revitalization. The team was engaged by the City of Somerville to further the neighborhood planning process for the Winter Hill neighborhood. We would like to thank the hundreds of volunteers that participated in the process, the land and business owners at Broadway and Temple, and the vendors that supported the project.



Thank you to the many volunteers and especially:
Ian Adelman
Jim Forrest
Sam Wesselman
Tracy Durkin
Property Owner J. Holmes
Retonica.com
The Self-Expression Project (selfexpressionproject.org)

Photos Credit:
Melissa Woods
Russell Preston



01. Introduction

The Winter Hill Better Block took place in partnership with the City of Somerville to grow the vibrancy of the intersection of Broadway and Temple in Winter Hill. The weekend intervention transformed the walkable but patchy area into a fully occupied district, complete with community space, outdoor amenities, public art and improved transportation options for bicycles and pedestrians.

On September 28, 2015 Team Better Block surveyed the study area for opportunities to enliven it. A community walk and talk identified the defining elements of the area to include cultural diversity, and easy access light rail and local businesses.



02. Neighborhood Planning Methodology

The Mayor's Office of Strategic Planning and Community Development advanced a schedule and funding to carry out a Somerville by Design neighborhood planning process over the course of 2014 - 2015. Community meetings and charrettes in September, October, and June provided a wealth of ideas for improving the look and feel of Winter Hill.



Team Better Block determined which project elements were to be included in the Concept Plan by applying criteria that took into account community needs and appetite.

We analyzed current zoning and permitting requirements for the City of Somerville, and met with the City to discuss permissible projects.

From an initial list of project ideas, we then met with private property owners to assess willingness to participate in the Better Block.

In addition, we took into account the unique abilities of local volunteers/stakeholders, such as entrepreneurs or performers. The talent and ideas available in the community, combined with the cooperation of the City and property owners, dictated the direction of the project.



Image of a vintage Main Street, Akron postcard, Google Images

03.

Why Better Block?

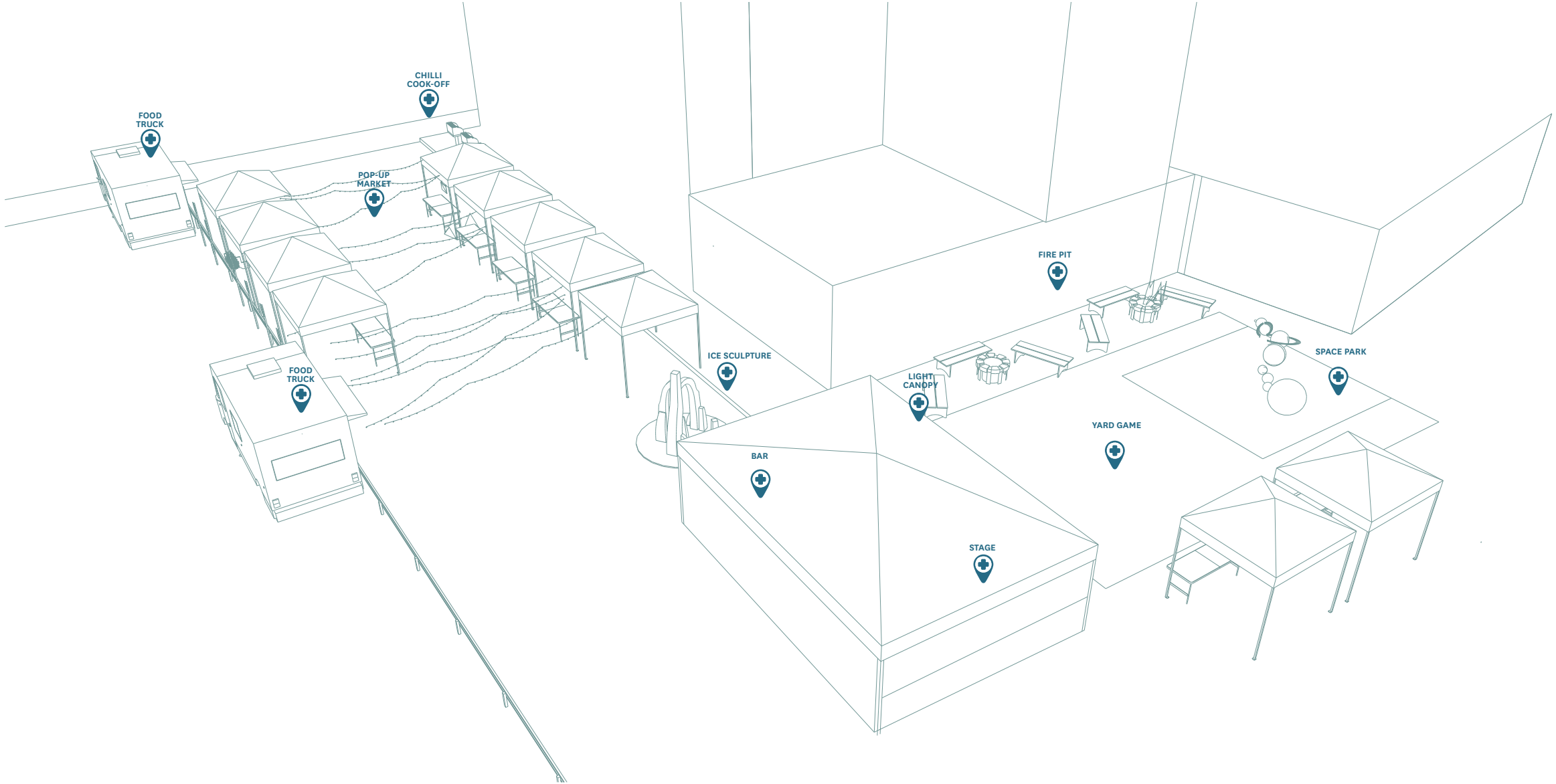
Better Block is only as successful as its partners and Somerville has many of the key ingredients: City staff and leadership fully supported the project from the beginning; Community participation was also strong, in both the numbers that came out to community meetings and workshops, and the level of commitment; Property owners were willing to try different uses and attractions for their buildings and vacant areas, and welcomed the Better Block project. These ingredients combined came together for a successful demonstration of what a vibrant, walkable block could look like at Temple and Broadway. The hope is that this temporary demonstration motivates long term change in the form of improved infrastructure, new businesses and programming, and policy changes that ease revitalization efforts.



04.

Concept Plan

Feedback from two community meetings in September and October forged a concept plan for testing a Main Street perpendicular to Broadway that included food, vendors, a stage, art, lighting, games, seating and a fire pit. The idea was to demonstrate how a human scale could create a comfortable place for neighbors to gather, shop, and play together. To increase access to the destination, a temporary contra flow bike lane was added on Marshall Street from Broadway to Pearl Street. A crosswalk was installed on Broadway at Temple Street, and an extension of the bus stop on Broadway made it easier to get on and off the bus.



Left
Perspective Plan

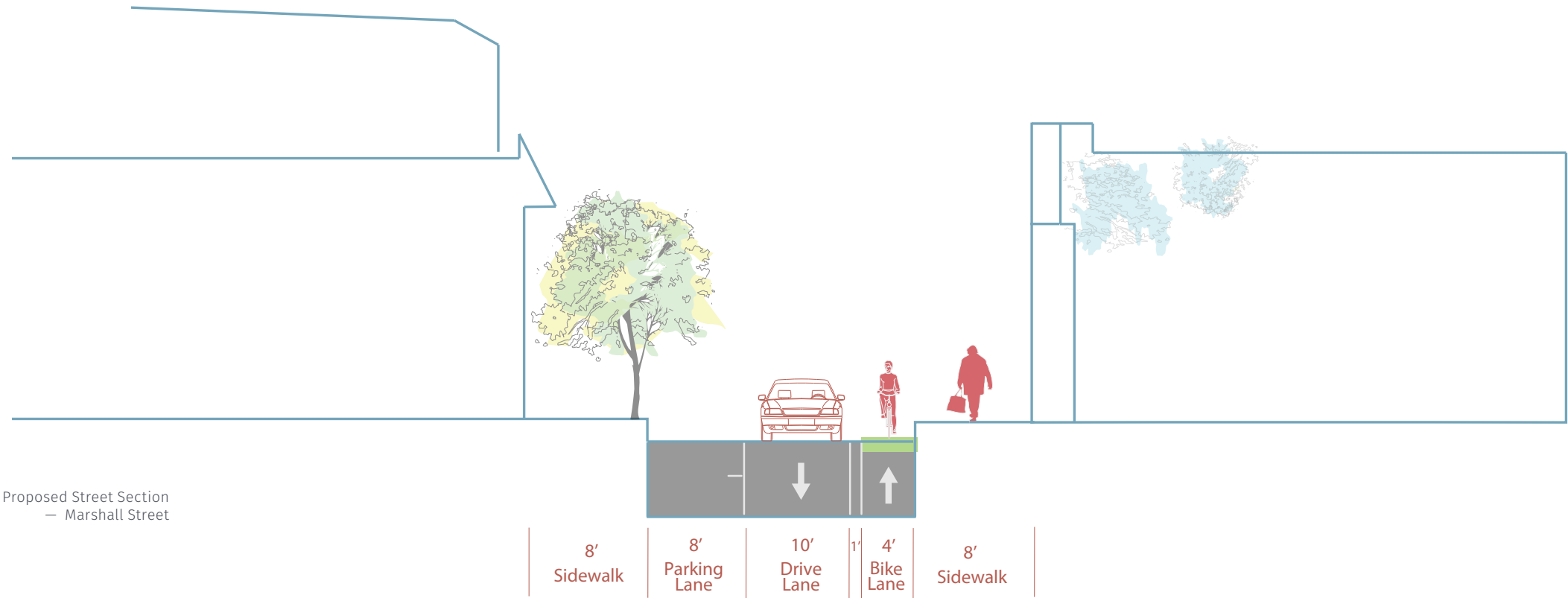
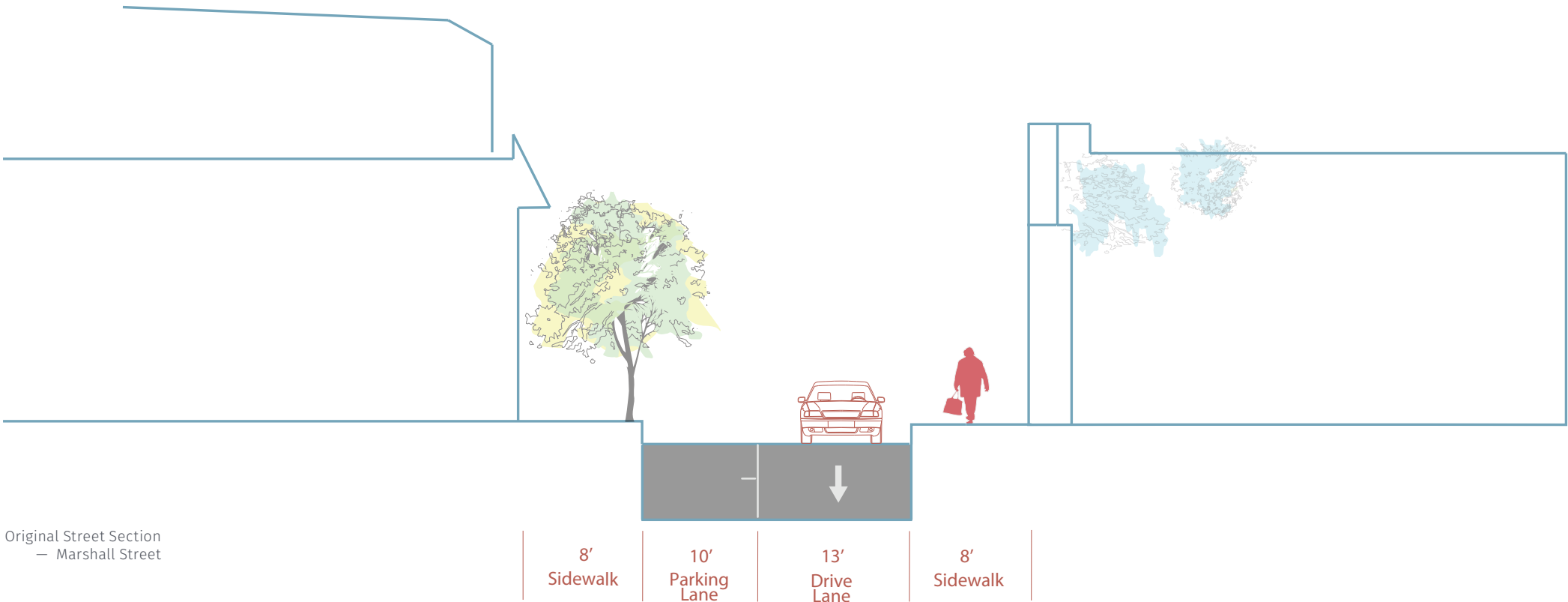
i. Drafting the Plans



i.

Drafting the Plans

Using standard measurements across the industry, and some tips we learned from past projects, the Better Block team mocked up the plans for Winter Hill’s contra-flow bike lane.



05. Community Workshops

We implemented these designs with the help of a group of volunteers. A volunteer portal was setup through Somerville by Design's website which was essential to organizing people's time. Leading up to the Better Block, matchmaking was done between volunteers, materials, and designs. Some of the tools were borrowed from Somerville Tool Library.

Days prior to the Better Block, the pre-build workshops were setup and manned by volunteers to assist in creating the individual ideas from the concept plan. The event tent was used as the Better Block lab to facilitate construction and storage of materials.



01. Streetscape Workshop

(bike lanes, crosswalks, stenciling)

02. Building Workshop #1

(parklet, street furniture, kiosks)

03. Building Workshop #2

(string lights, landscaping)

04. Setup Crew

05. Clean-up Crew

06. Schedule of Events

Over two days we tested the concepts and programming elements. Hundreds of people attended and the following pages highlight the results. Since Somerville typically experiences harsh winters, the summer months are saturated with events, while December through February experience little public programming. Better Block attempted to combat that trend by giving residents and community members a reason to gather outside during the winter. We did that by creating a pop-up market selling holiday gifts and locally made goods, setting up a fire pit, hosting a chili cook-off, installing a covered beer garden, or enlisting artists to carve a sculpture out of ice and paint a mural on an adjacent wall.

The result was a bustling activated area that had community members excited about their neighborhood and provided small business owners with an audience. A few of the vendors in the market area were setting up for their first time, giving them a low-risk way to test out their ideas. One of the vendors, Neighborhood Produce, is planning on opening a permanent organic grocery store in the area, and used the Better Block to pilot their concept. They now plan to launch a Kickstarter campaign in order to further their progress in 2016.

Recommendation:

Work with area business owners to regularly program the space with outdoor markets, concerts, and food trucks. An event once a month can renew interest in the area and spur economic development, while giving the community a reason to work together on a common project. The business that will soon be anchoring the block, Winter Hill Brewery, should be a key player in programming the lot. Additional outreach should also be done to Winter Hill businesses.

“I received a terrific response from the neighborhood. Everyone expressed excitement and support for Neighborhood Produce and thought Winter Hill would certainly benefit from this type of establishment”

Matt Gray
Owner of Neighborhood Produce

THURSDAY
DECEMBER 10, 2015

5pm - 8pm Build Workshop#1
Winter Village
Yard Game Invention

FRIDAY
DECEMBER 11, 2015

10am - 2pm Bike Lane Workshop

3pm - 5pm Installation Workshop
String Lights, Landscaping

5pm - 8pm Build Workshop#2
Parklets
Street Furniture
Yard Game Invention

8pm - 9pm Stenciling

SATURDAY
DECEMBER 12, 2015

Workshops

8am - 9am Crosswalk Workshop

4pm - 5pm Metrics Workshop #1

Music - Performance

4pm - 6pm Ice Sculpture

6pm - 8pm Forrest James
Qwill
Radio Scotvoid
Noel Snow
Fishing The Sky
JD Debris

Drinks

4pm - 8pm
-Daddy Jones Bar
Alcoholic Drinks (mulled wine, cider, eggnog)
-Bloc 11
hot coffee, teacocoa, and baked goods

Food

4pm - 8pm
-Falafel Place
-Pennypackers food truck
-Heritage food truck

Chili Cook-off:
Greg Brown
Pete & Roberta Sutton`

Made in Somerville Market

-Neighborhood Produce
-Jennifer Weigel
-Consuelo Perez
-HeySgay
-Heather Gray Knits
-Rapt Stonewear
-Of Note Stationers
-Forge Baking Company
-Castle Paper Co
-@Stake

**WINTER HILL BETTER BLOCK
EVENT SCHEDULE**

TEMPLE@BROADWAY BEHIND POST OFFICE

SUNDAY
DECEMBER 13, 2015

Workshops

12pm - 1pm Metrics Workshop #2

4pm - 5pm Tear Down Workshop

Music - Performance

1pm - 2pm Amy Kucharik
- Somerville Yard Game Playing
- Space Park

Drinks

12pm - 4pm
-Bloc 11
hot coffee, teacocoa, and baked goods

Food

12pm - 4pm
-Sherezad food truck
-Pennypackers food truck

Chili Cook-off:
Greg Brown
Pete Sutton
Mike Bolio
Michael Johnson

Made in Somerville Market

-Jennifer Weigel
-Consuelo Perez
-Letters from Rita
-Just Add Cooking
-HeySgay
-Heather Gray Knits
-Rapt Stonewear
-Of Note Stationers
-Forge Baking Company
-Neighborhood Produce
-Castle Paper Co



Top
Vacant lot before the Better Block

Bottom
Activation with Pop-up shops

The chili cook-off and fire pit provided a way for attendees to warm up during the event. Two competing groups neighborhood residents came out for the cook-off, giving out free samples for participants to vote on. On Friday evening, Heritage Food Truck also participated in the competition, though the amateurs succeeded in securing the prize. Kids enjoyed roasting marshmallows over the fire and watching the live ice sculptor, while adults enjoyed hot spiked cider in the beer garden tent.





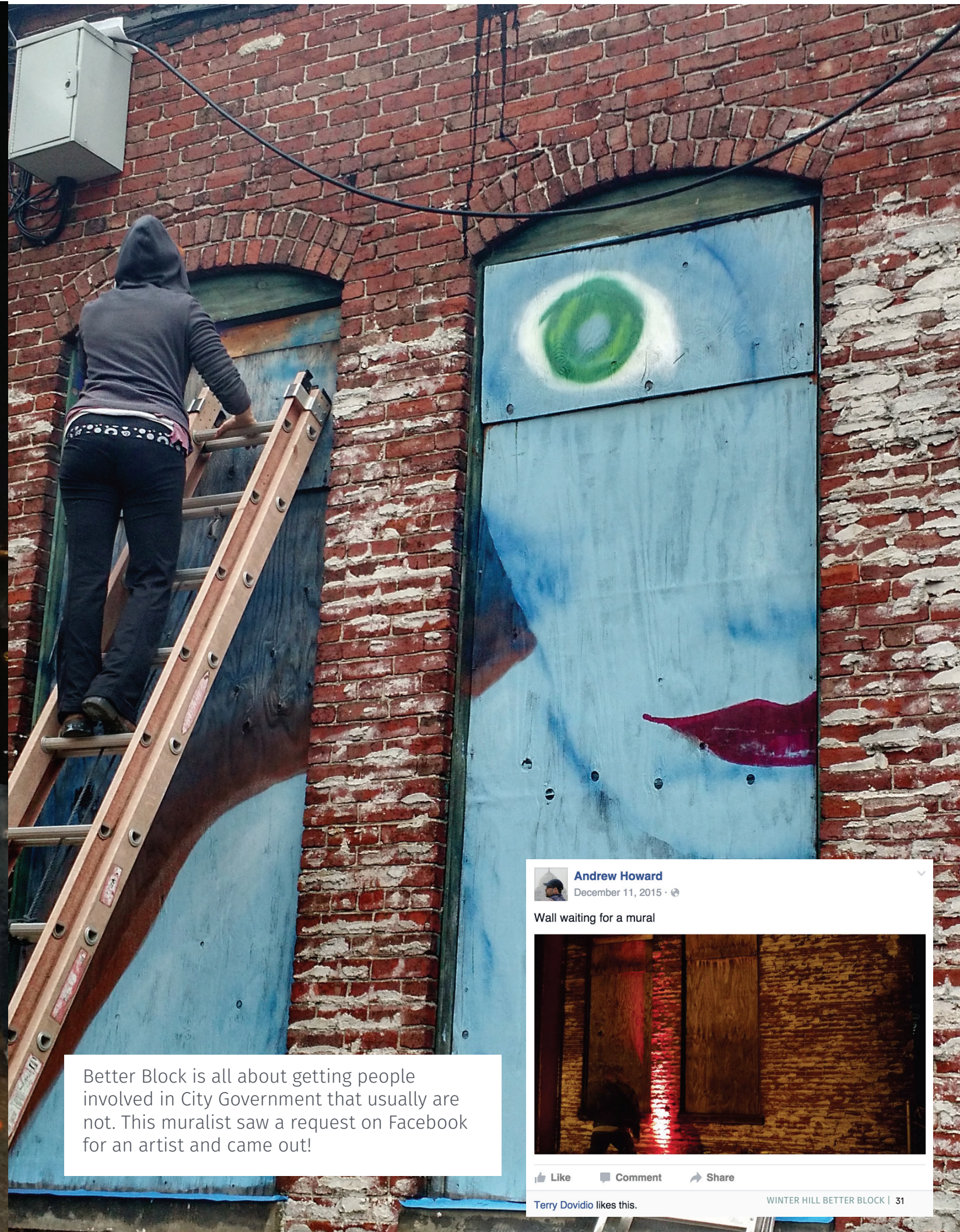
Jim Forrest, a volunteer from the community, programmed the music for the weekend, bringing in local DJs and bands to perform on stage throughout the demonstration. He also enlisted a lighting engineer to light the ice sculpture and tent for Friday evening.





A variety of land uses may be co-located side by side along a street or one above the other, such as shops at ground level with residential development above. The term ‘mixed-use development’ refers to buildings that contain a mix of uses – such as commercial, retail or other non-residential uses, maintaining an active commercial and business environment at pedestrian (street) level often in conjunction with residential dwellings on the upper levels in a multiple dwelling configuration. The activity tent was a test for future infill development potential.





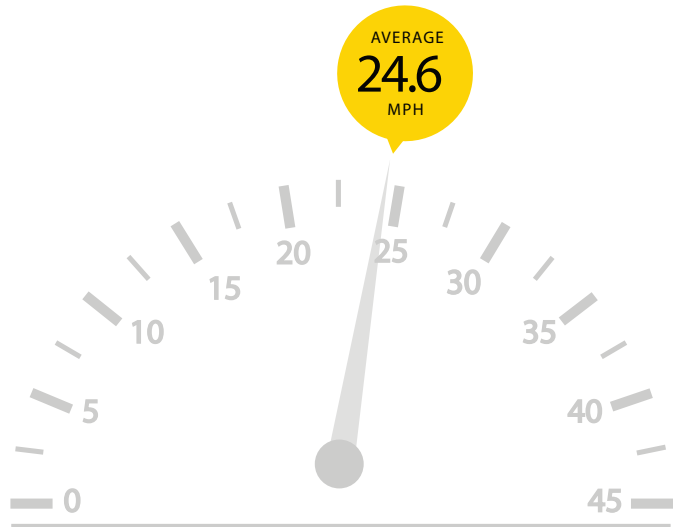
Better Block is all about getting people involved in City Government that usually are not. This muralist saw a request on Facebook for an artist and came out!



07.Infrastructure Prototypes

Contra-Flow Bike Lanes

Contra-flow bicycle lanes are bicycle lanes designed to allow bicyclists to ride in the opposite direction of motor vehicle traffic. They convert a one-way traffic street into a two-way street: one direction for motor vehicles and bikes, and the other for bikes only. Contra-flow lanes are separated with yellow center lane striping. Marshall Street from Pearl Street to Broadway approximately 1,650 feet was converted into a contra flow bicycle lane for two days. The introduction of the lane reduced auto speeds slightly and had an overall positive impact on bicycling.

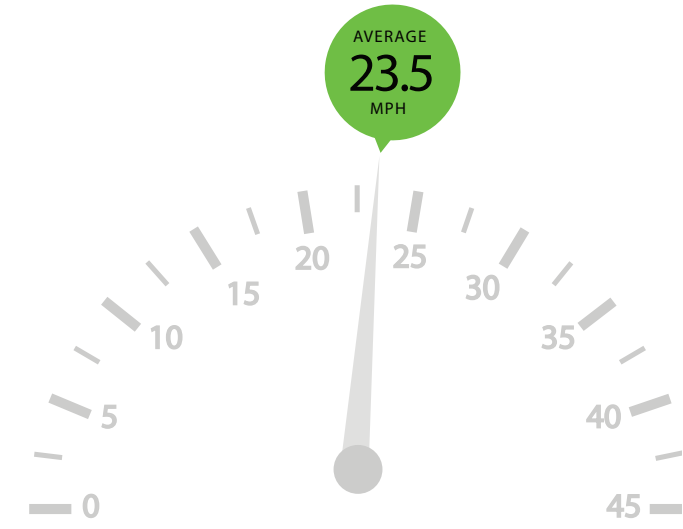
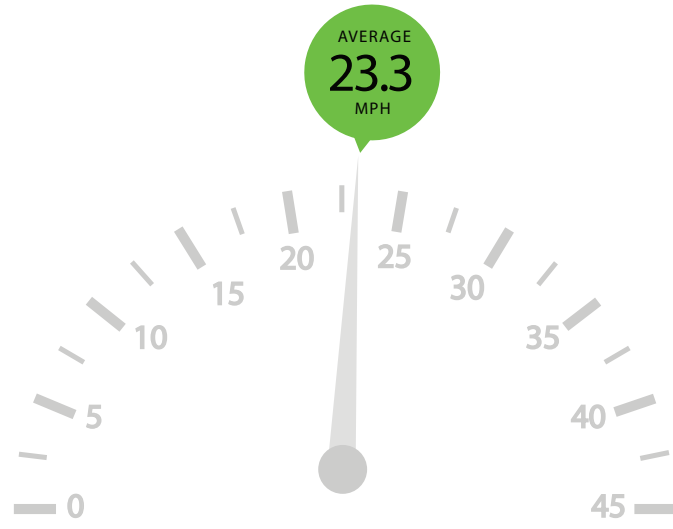


Recommendation:

Incorporate Marshall Street contra flow lane into Central Broadway redesign so signal can be modified to accommodate bicycles.

Left
Average speed before Better Block (2015-12-10 16.58)

Bottom
Average speed during Better Block (2015-12-12 17.29 | 2015-12-13 14.01)



Community Response:

The reception for the contra flow lane was very positive. There were 8 recorded cyclists who biked in the contraflow lane on the second day of Better Block. Here are some of the cyclists, many of whom live in Winter Hill.

Mark Chase, Scott McCabe, Chris E Oneill, Chris Patti (*he wasn't a cyclist - he was a resident on Marshall St who strongly approved of the contraflow lane as he was walking by.*), Colin McCarthy

Other comments include:

* One resident of Marshall St said he already biked contraflow without the contraflow lane, but was worried about providing a bad example for his daughter. He appreciated the contraflow lane.

* A couple who lived on Medford St nearby was very excited about the contraflow lane. They said they bike sometimes, but biking uphill on School St was too stressful because of speeding traffic, so they had walked to Better Block instead. They wished the contraflow lane was permanent so they could use it. (Also, they said thank you for the bike boxes on Somerville Ave and asked when Winter Hill could get some!)

* A resident of Marshall St was skeptical of the contraflow lane because she thought Marshall St was too dangerous already. She said that Marshall St had just as much high speed traffic as School St (though several other neighbors disputed that). She was in favor of traffic calming, but didn't think the contraflow lane was a good way to do it. She said she would be fine with a regular bike lane on Marshall, but wanted more focus on enforcement.

* An elderly woman who lived north of Broadway was very excited about the contraflow lane. She said that Marshall was very quiet already, and was really happy about the idea of being able to bike on a quiet, flat street.



Colored Crosswalk

The purpose of the crosswalk was to better connect the neighborhood, make use of existing on-street parking and provide some color to the dull intersection.

As the shortest natural path for pedestrians to reach the post office and bus stop, we noticed people using it even before the installation was complete. Underutilized on-street parking was quickly used after the installation because of the ease of crossing Broadway. Drivers respected the new crossing even without operating traffic signals.

Recommendation:

Permanently install a crosswalk that uses color and branding for Winter Hill. Even greater safety could be realized with a “no-turn on red” for southbound Temple and a longer pedestrian phase. Be aware that intersection needs signal change for the crosswalk.

Top Right
Broadway Crossing before the Better Block

Bottom Right
Broadway Crossing with colored crosswalk



Bus Bulb Out

The purpose of the bus stop extension was to solve a problem we noticed at the stop; the eastbound bus on Broadway must currently exit the travel lane to pick up riders waiting on a small bus platform. This often results in awkward boarding due to the bus angle with curb, prolonged waiting for cars to re-enter the traffic flow, and general disruption of traffic on Broadway. The model bus bulb out we created extended the sidewalk seven feet into the travel lane and broadened the stop by eight feet. The result was much easier boarding for passengers, enjoyable waiting, and more efficient bus ingress and egress.

Recommendation:

Consider the possibilities of this bus stop to be consolidated with one nearby and/or correct the geometry of the stop to allow the bus to stay in traffic and better accommodate its riders.

Right
Bus Bulb Out during the Better Block



08.

Public Life Results

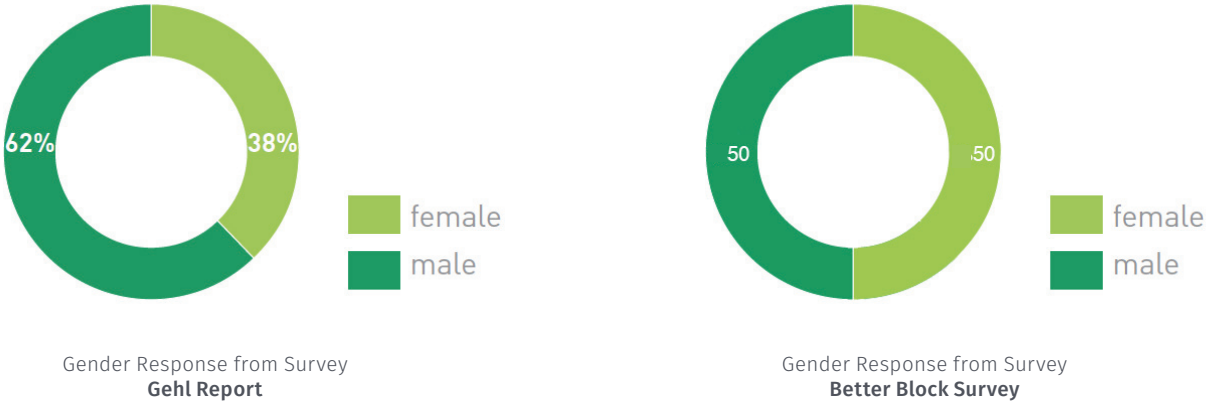
In the summer of 2015 Gehl Studios performed a public life public space survey of portions of Somerville. East Somerville and the Winter Hill neighborhood where observed for how people use public space currently and the report recommends several ways to induce more active spaces. Team Better Block replicated many of the recommendations into temporary demonstrations to gauge how people would react to changes in the built environment. During the weekend Better Block volunteers recorded similar metrics as the Gehl report to see how interventions in public space could impact public life.

Gender:

“Make places safe and comfortable for women and children and everybody will feel welcome”

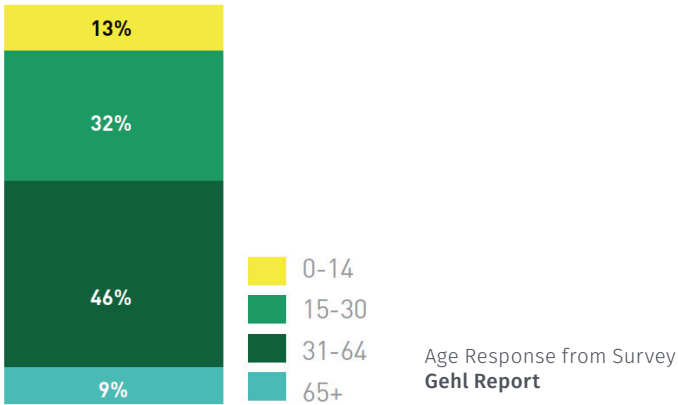
Andrew Howard
Team Better Block

Gehl uncovered that East Somerville and the Broadway Corridor is dominated by men. This is not an indication of an abundance of single men living in the area, as census data shows that it is nearly an equal distribution. Rather it is a beacon that the area currently does not feel safe. During the Better Block survey indicated an equal distribution of men to women.



Gender:

You want places to feel comfortable for people of all ages, but a young demographic in a neighborhood is a sign of vibrancy. The average age of 23 for the Better Block is a positive indication of a neighborhood that is youthful and active. Young people have the power to effect change in their own communities. This indicates potential for more retail and food and beverage in the area.



23

Average Age
Better Block Survey

See More Of:

Overwhelmingly, the attendees of the Better Block wanted to see more food & beverage establishments, active retail and programmed activities in public spaces. The Gehl survey indicates that more active storefronts and programming will make for a healthier street life with a balance of men to women. The Better Block indicated the pent up demand for more walkable urbanism in Winter Hill. This can be further realized by more establishments opening and regular special event programming.



Impression of Better Block:

Overall the Better Block was received favorably by the community. This indicates that a local “Go! Winter Hill Group” should be formed to continue programming and testing ideas in the community.



Nidhi Gulati
@gulatinidhi

Saturday serendipity--Discovering a @TheBetterBlock event!
#Tactical #LighterQuickerCheaper #Placemaking #WinterHill



12/12/15, 5:19 PM

1 RETWEET

2 FAVORITES



Russell Preston
@russellpreston

Nothing like a chainsaw to make neighborhood planning more fun! Nice job @TheBetterBlock @SomerbyDesign



12/12/15, 8:51 PM

5 FAVORITES



Tommy O
@tranquil_serene

@TheBetterBlock Chili cook off on #winterhill #somerville so great. Loved the ice carving and DJs too





Christopher Scott
@chrisjscott

@JoeCurtatone FYI, @TheBetterBlock knocked it out of the park with the Winter Hill festival going on this weekend!!!

12/12/15, 7:10 PM



Spencer Sherman
@spencerhsberman

Imagine a produce store in Winter Hill! #winterhillbetterblock nrhhoodproduce.com cc @Ward5Online @SomerByDesign @TheBetterBlock

12/12/15, 9:14 AM




bloodbathory
@HouseBathory

Ice sculpture at the end of our street for the winter hill build a better block fest. [instagram.com/p/_NVskZmZxM/](https://www.instagram.com/p/_NVskZmZxM/)

12/12/15, 5:24 PM

1 FAVORITE



Elizabeth Vincens
December 11, 2015 · 🌐


This is amazing. Just found out. So Down

Like

Comment

Share

Monica Diodati likes this.



David Sloane

And the city approved a 24 hour block party. Amazing. 😊

Like · Reply · 1 · December 11, 2015 at 11:27am · Edited

Email to Mayor:

Dear Mayor:

I’m writing to give you some feedback about the Winter Hill Winter Festival taking place this weekend under the direction of Better Block - I attended the early planning meetings and helped a bit with some of the prep on Thurs. night and, even still, didn’t really know how it was all going to come together.

Well, I just got back from visiting the final product and I have to say that it's GREAT - I can't tell you how exciting it is to have something like this in our neighborhood! I was thrilled to see how well-attended it was and surprised at how great it all looked (considering that it was just an empty lot with a few pieces of “furniture” made from wood palettes as late as last night!).

My understanding is that Better Block was brought in to fill the gap between Somerville By Design’s initial engagement with Winter Hill and whenever they’ll actually be able to get to work and I hope that you’ll keep BB engaged with us in the interim, as I think it’s critical to keep seeing unique activities like this in Winter Hill.

Sincerely,
Chris Scott





heathergrayknits

FOLLOW

38 likes 8w

heathergrayknits last #heathergrayknits show of the year! And I'm so excited for this one, guys, because it's right in my neighborhood. I can literally look out my kitchen window over the fence and see where I'll be vending. And it's not just a maker's market, there'll be so many cool events - a bon fire, a chili cook-off, workshops, music, food trucks ... It's at Temple & Broadway behind the post office, Saturday 4-9, Sunday 12-4. 🎉🎉🎉 and if you want you can come by on Saturday and wish me happy birthday 😊 #supportlocal #somerville #betterblock #betterbirthday

heathergrayknits #craftshow #holidayfair #handmade #winterhill #madeinsomerville #supportlocalartists #betterblocksomerville #somervillebydesign #makersmarket #supportlocalproduce #localartists #knittersofinstagram #etsyseller #etsy #localbusinesses #igers #knittersofig



daddyjonesbar
Somerville, Massac...

[FOLLOW](#)

29 likes 8w

daddyjonesbar We're still having a blast at the Winter Hill Better Block Party!
#winterhill #betterblockparty #daddyjones #getyourgreekon #welovesomerville



Add a comment...



stephanie_ritak

[FOLLOW](#)

29 likes 8w

stephanie_ritak my lettering bestie rocked her first open market!! so proud @castlepaperco !! 🎄📖📅 #betterblock #winterhill #bostonbloggers #etsyshop
castlepaperco 🥰🥰🥰 wouldn't have without your help!!
shopvia74 Just amazing 🙌



Add a comment...



ofnotestationers

[FOLLOW](#)

66 likes 8w

ofnotestationers We are having the best time poppin up all over town! Today we'll be back in #winterhill at #betterblock (12-4pm) AND we will be @workbar Union during the Union Square holiday Stroll (1-4pm). We'd love to see you at either of these locations!!

ofnotestationers #holidaystroll • #unionsquare • #somerville • #unionsquareholidaystroll • #ofnotestationers • #holidaycards • #shopsmaill • #buylocal



Add a comment...



Istahl31
Winter Hill Brewing...

[FOLLOW](#)

30 likes 8w

Istahl31 Celebrating the holidays in #winterhill #betterblock #somerville
retonica Hope you liked the lights #retonica



Add a comment...






 **amykucharik**
Winter Hill Brewing... [FOLLOW](#)

[ukulele_in_moscow](#) and [ukulelegal](#) 12w like this

amykucharik Free chili cookoff. #livemusic 1-2pm #ukulele #winterhill #betterblock

 Add a comment... 





 **raptstonewear**
Winter Hill Brewing... [FOLLOW](#)

14 likes 12w

raptstonewear Chico is helping me out at #winterhillbetterblock today in Somerville. we're here til 4 with other vendors, food trucks and a free chili cook off 🍌 #jewelry #ceramics #fiberart #handmade #handcrafted #boston #somerville

strawbiter26 So cute! Adult hip and cool science fair of eye candy 🍷🍷🍷

 Add a comment... 



 **chuckthewonderdog** [FOLLOW](#)

175 likes 10w

chuckthewonderdog After a full day of rest, I went for a walk and found this chair. It's just my size; I think I should keep it! #winterhill #somerville. ... #dogs #minpinstagram #adoptdontshop #miniaturepinscher #dogsofinstagram #instadog #dog #cutedog #chuck #minpin #dogoftheday

tankthedoberman That could be your throne. 🐾

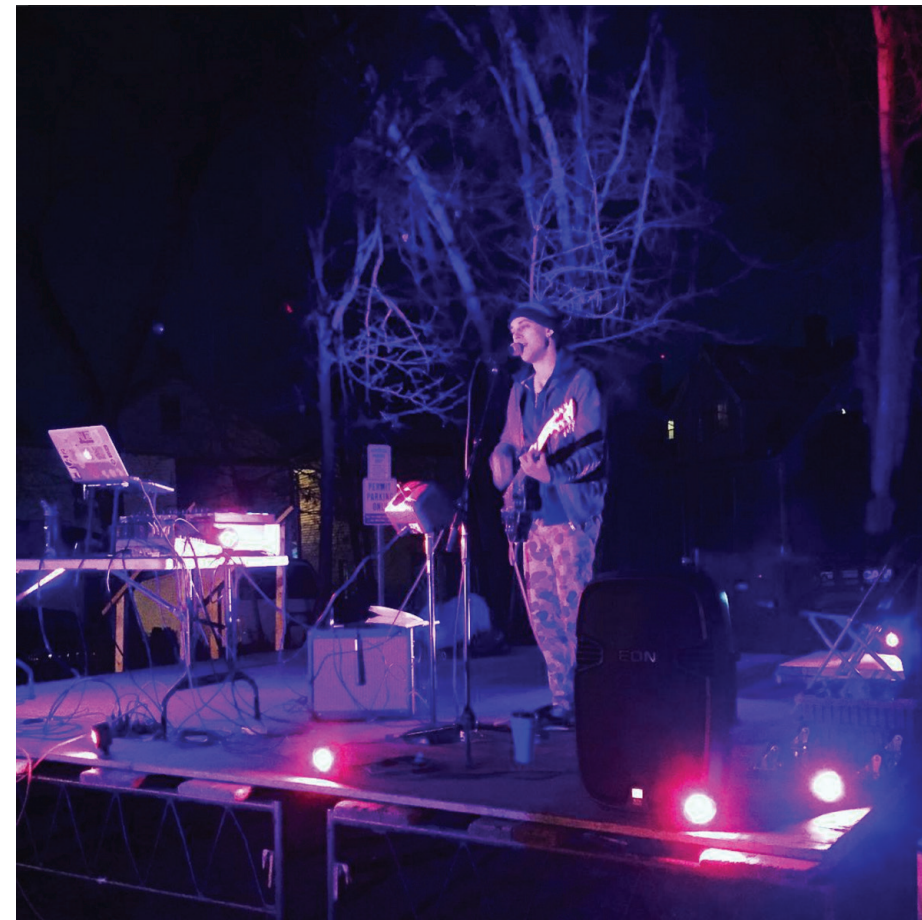
oldstinkybreath You look grand in it! **iloveminipins** It could work, but needs a cozy cushion🐾👍👍👍

chuckthewonderdog @iloveminipins And probably some blankies. And a heat blower. And some snacks.

chuckthewonderdog @tankthedoberman Good idea! I do need a bigger throne🐾

chuckthewonderdog @oldstinkybreath Thank you. mv dear🐾

 Add a comment... 



 **anna_enache** [FOLLOW](#)

[pablorica](#), [saushag](#), [anna_enache](#), [xpaulcaputox](#) and [moneymatterz_](#) 12w like this

anna_enache #winterhillbetterblock @jddebris #music #somervillema

 Add a comment... 

09. Policy Implications

The Winter Hill Better Block tested the idea of a walkable/bikeable neighborhood destination that provides food and beverage, retail shops, public art and public space organized with a human scaled main street. Over five hundred people visited the project over two days and surveys indicated a desire to make the temporary prototypes permanent.

Quick Policy wins for the area around Broadway @ Temple include:



- Supporting/facilitating a creation of a Go! Winter Hill Group to continue to test infrastructure and programming ideas and develop a more robust identity for Winter Hill.

- Make it easy for businesses to solicit using a parking space as a Parklett

- Dedicate bond/general funds to implement the complete street prototypes tested during this project

- This project proved what can be done in small spaces when the rules are bent for infill. Invite proposals for rapidly infilling areas using temporary and semi permanent structures, food trucks, kiosks, food stands, public art, and other placemaking tools.

- For Somerville to reach its' quality of life goals space that is currently used and planned to be used for auto parking must be slowly removed. Set a goals of reducing a few off street parking spaces every year from Winter Hill and replacing them with parkletts, infill development, and greater public space.

- Throughout this process the former Star Market was brought up as a critical part of Winter Hill's future. Somerville should consider a Vacant Property Registration Ordinance that penalizes vacant buildings for not having a development plan of action that is executable within two years for activation.

10. Goals for Next Event

- Improved outreach including fliers + invites to local organizations
- Targeted inclusion of area businesses
- Multi-lingual outreach

“One of the highlights was before the event even happened. Spray painting advertisements with neighbors and learning about my new neighborhood was very cool and memorable”

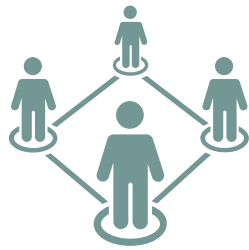
Jim Forrest

block
better
winter hill



11. Next Steps

Continue the Programming with a “Go! Winter Hill Group” Many times after Better Block locals take up the momentum to continue to program and test ideas in a community. Go Oak Cliff in Dallas Texas is the model for this type of organization. The formula is simple:



1) Organize a small group of passionate people – usually this is a local business, artist, organizer and social media expert.



2) Meet quarterly and identify a place to activate, a theme and set a date for action. Go Oak Cliff discovered that their neighborhood was once home to French settlers, so they started celebrating the French holiday of Bastille Day. The celebration has grown to over 10,000 visitors and helped start various businesses.



3) Report back on the success of events/initiatives and plan the next one!



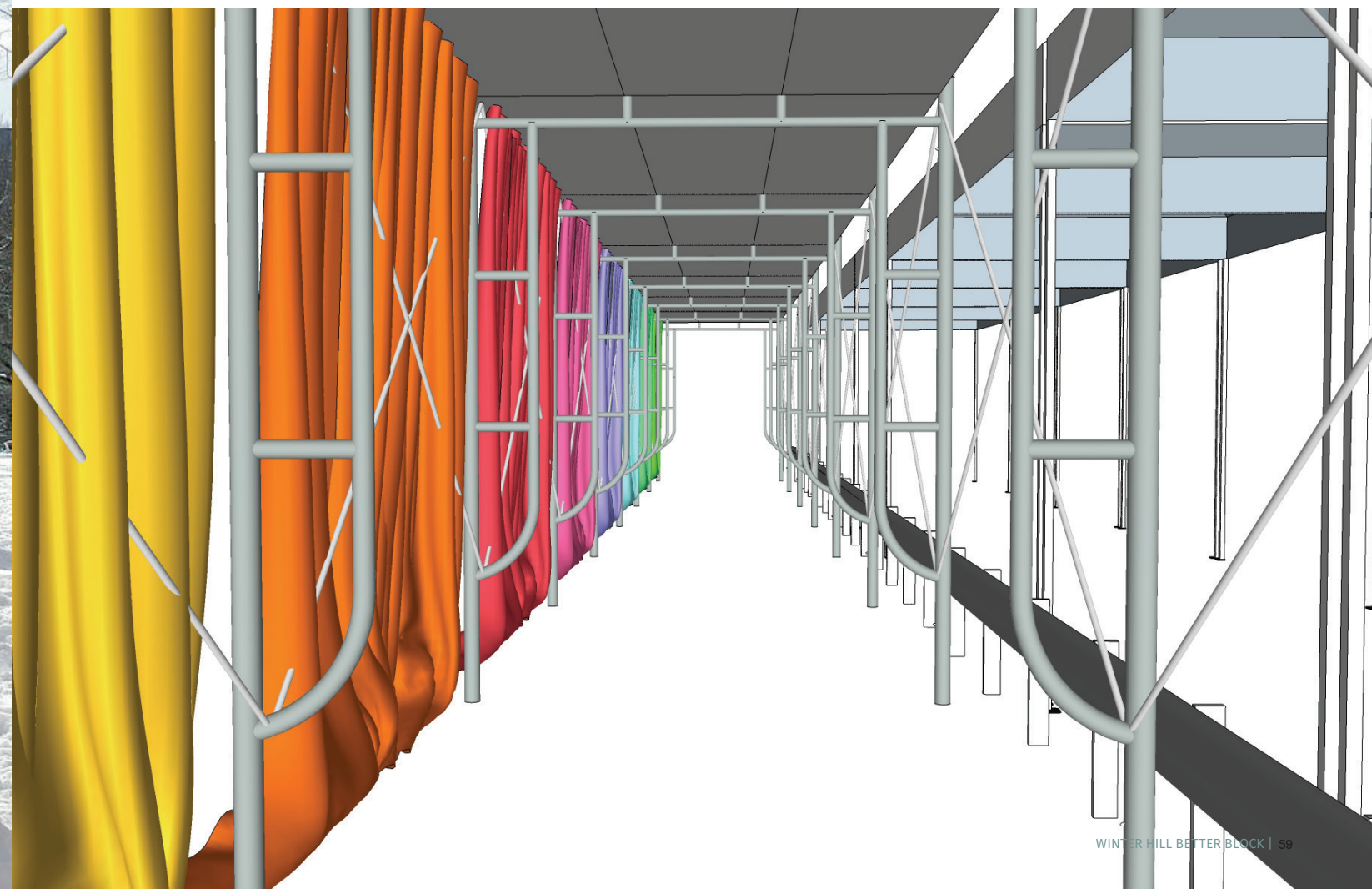
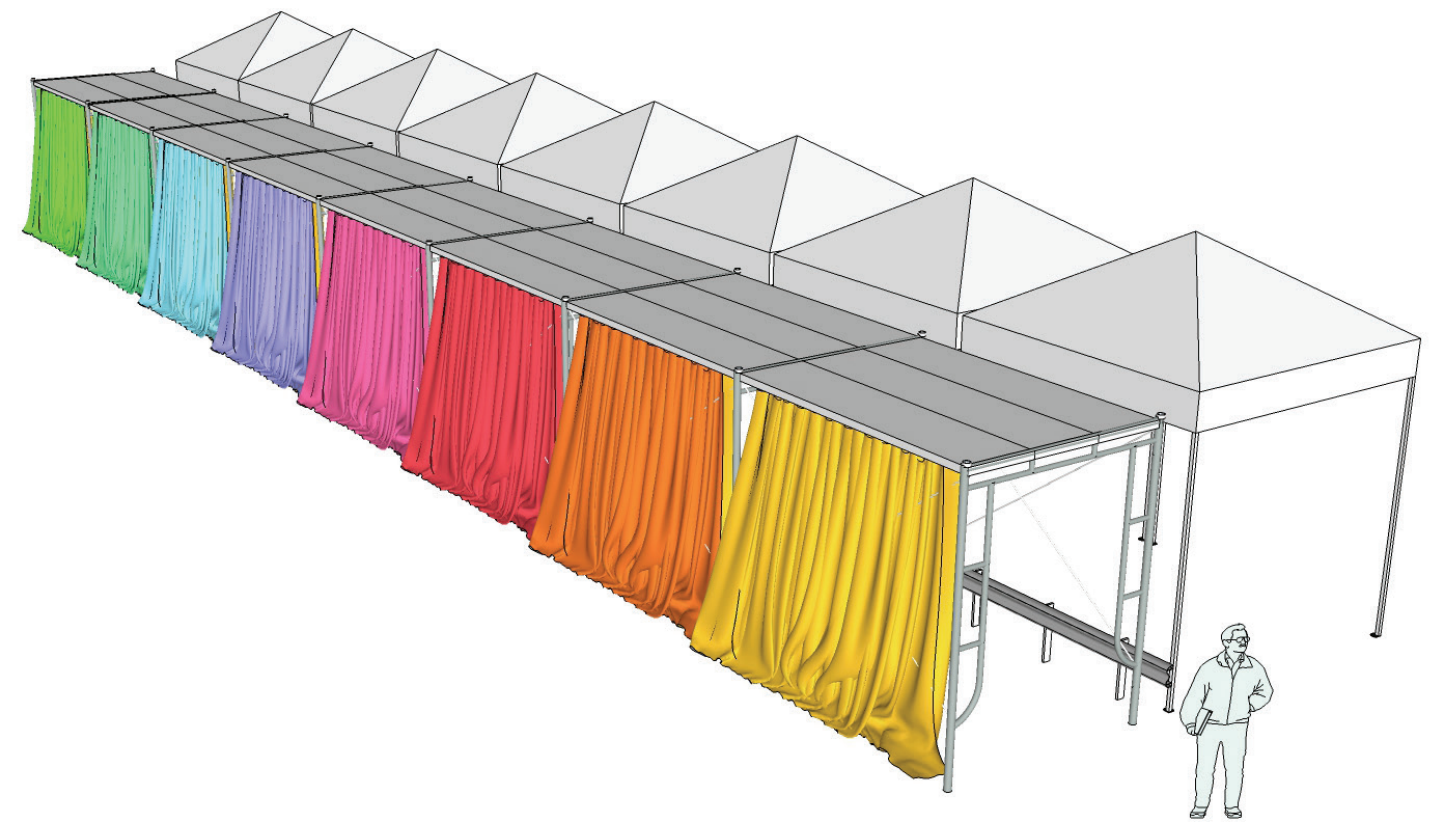
APPENDIX I

Ideas for Future Better Blocks





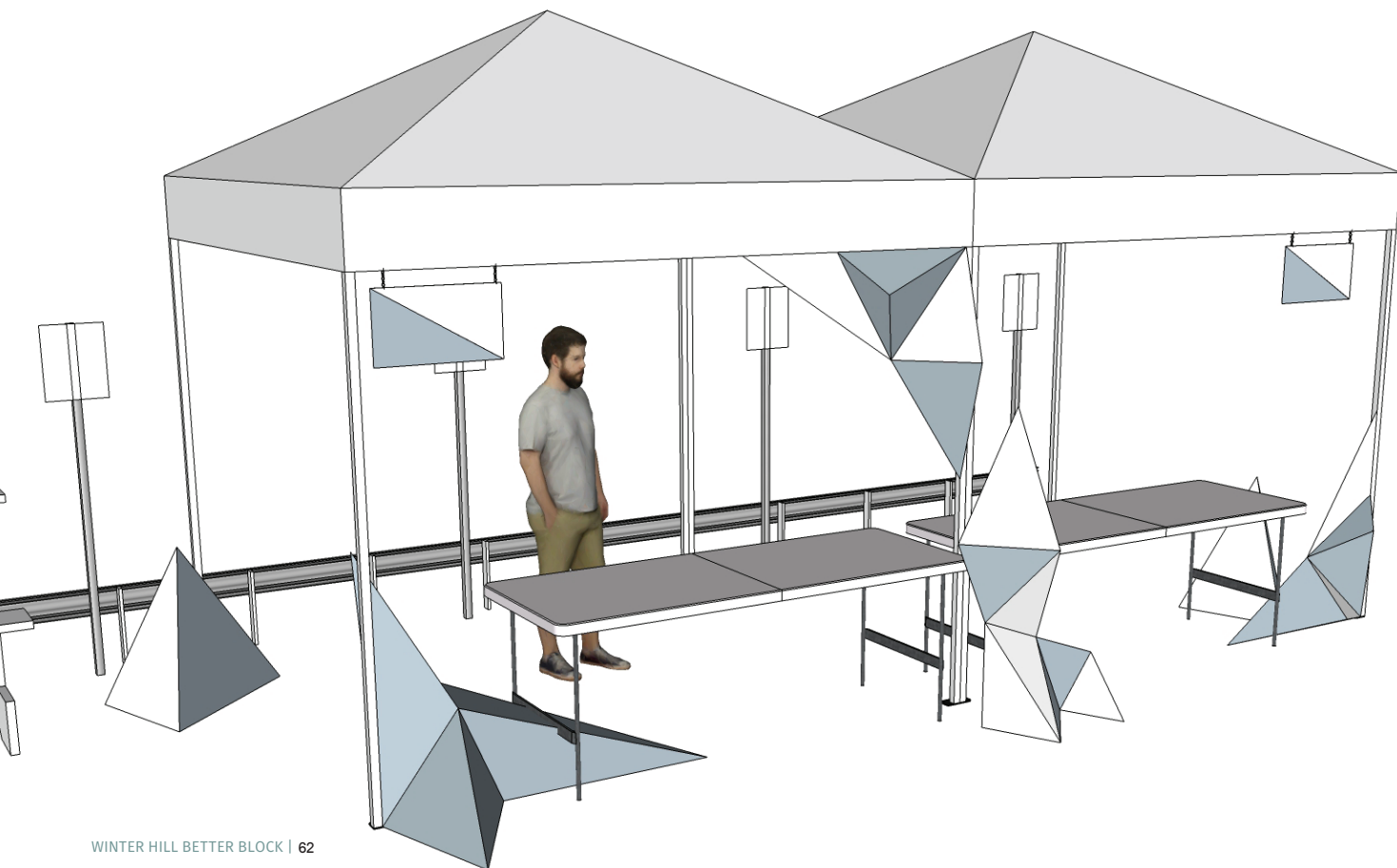








APPENDIX II Recipes



GREEN BIKE LANE RECIPE

1 MEASUREMENT OBSERVATION

- Obtain ROW Widths
- Review traffic accident history
- Assess existing bike facilities

2 DESIGN

- Street mix cross-section
- Sketchup model
- Traffic control plan

3 IMPLEMENTATION

- Traffic Control: Rental
- Materials

MATERIALS

- per 180'**
- (3) Tempera Paint: \$10 /unit
 - (1) White Spray Paint: \$5/can
 - (4) Tape: \$15 / Roll
 - (1) Stencil



Tape
ProTapes Pro Duct 110
PE-Coated Cloth General
Purpose Duct Tape,
60 yds Length x 4" Width
White

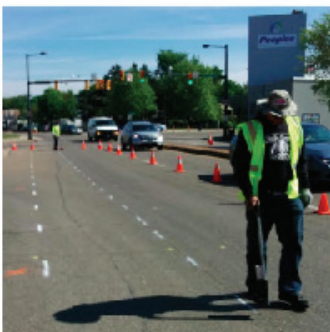


Tempera Paint
Sargent Art 22-7166 1-Pound
Art Time Powder Tempera,
Green.
Follow directions on jar.

4 INSTALL

- Total Price for 180' (5' painted bike lane including striping & 2' buffer) : **95\$**, labor and traffic control not included

CLEAN SURFACE	2 people	Use push brooms, collect & dispose of debris
MEASURE & GUIDE MARKS	3 people	Use marking spray, measuring tape & pull string. Measure dimensions off the existing road center line
PAINT SPRAYER	3 people	Apply spray with a brisk walk, 1 person pushes machine, one person guides path, one person tapers edges with cardboard
APPLY TAPE STRIPPING	At least 2 people	Person 1 holds end on ground, second person walks ~ 6' in advance ensuring tape is pulled straight. Person 1 walks along tape securing it to the road
BIKE STENCIL	2 people	Person 1 holds stencil in place. Person 2 sprays white paint using hand sprayer or spray cans



PARKLET RECIPE

1 SUPPLIES TOOLS



- Pallets (6 pallets per stage, 13 per parklet) - Potential pallet sources include local grocery stores, Home Depot & Lowes check with store managers in advance. Blue painted pallets are o limits. Pallets can also be purchased directly from pallet renshers but l may cost up to \$8 a pallet. Renishers can supply delivery otherwise, plan on renting a Uhaul truck to transport pallets to the site. Ideally, use pallets of all the same size 48"x48" are common.
- 1.5" Deck Screws
- (3) 4x8 sheets of OSB Plywood
- Paint - Discounted paint can be obtained from paint shops by requesting 'mis-tints'
- Sandpaper pads
- Hammer
- 1" Medium weight deck nails
- Measuring tape
- Paint Brushes & Rollers (4" preferred)
- Drop Cloth
- Painter's Paper
- Cordless Drill
- Circular Saw
- Safety glasses
- Work Gloves

2 BUILD

-Approximate price per parklet **\$50**, Take down- pallets can be returned to original source or picked up by pallet salvage company.

FOUNDATION	4 people	Place pallets at on the ground. For parklets, place pallets flush with the curb. Place two rows of 3 pallets parallel to the curb. Set plywood on top of pallets. No cutting plywood or pallets should be needed. Secure plywood to pallet with deck screws.
SIDES & CANOPY	4 people	For parklets secure pallets vertically along edge of foundation to create a boundary fence. Leave sidewalk side open. For more embellished parklets create a canopy using 2x4s as posts. Landscape fabric or burlap make create shade material. Use heavy duty stapler and 1 x1 trim boards to create support structure for shade
PAINT	4 people	Paint exterior side of fencing



PALLET FURNITURE RECIPE

1 SUPPLIES TOOLS



2 BUILD

- Pallet building is best done in a workshop setting. Promote the workshop in advance and have an online signup form. On workshop day assemble volunteers and break them up into teams depending on skillsets. Establish 3 stations cutting station, assembly station and paint station. Create at least one model item in advance of workshop for furniture to be based on. Many design options are available online.

CUTTING STATION	3 people	Limit access to circular saw to dedicated users. Cut pallets into necessary dimensions
ASSEMBLY STATION	4 people	Assemble pallet pieces into furniture using drill and screws
SAND & PAINT STATION	4 people	Sand & Paint nished furniture

Approximate price per bench **\$10**. When placing furniture out for the event ensure the paint is dry for sitting on. Place painters paper on wet spots as necessary.



CROSSWALK RECIPE



1 PROCESS

- Review traffic accident history
- Assess existing businesses and identify potential croswalk locations
- Coordinate safety inspections with local authorities.
- Use push brooms, collect & dispose of debris
- Measure and mark the points where strips are going to be positioned..
- Person 1 holds end of one strip/tape, second person holds the other end and ensure strip/tape is pulled straight. Person 1 starts securing it to the road.

2 ITEMS

-Approximate cost is **\$50**,

- (1) Tape: \$15 / Roll
- Chalk Spray
- Strips of waste sticker paper from Printshops.
- (2) Safety Vests



Tape
ProTapes Pro Duct 110
PE-Coated Cloth General
Purpose Duct Tape,

60 yds Length x 4" Width

White



Chalk Spray
Streetwise Chalk Pigment
Spray

Available as 400ml cans in 10
colours.

