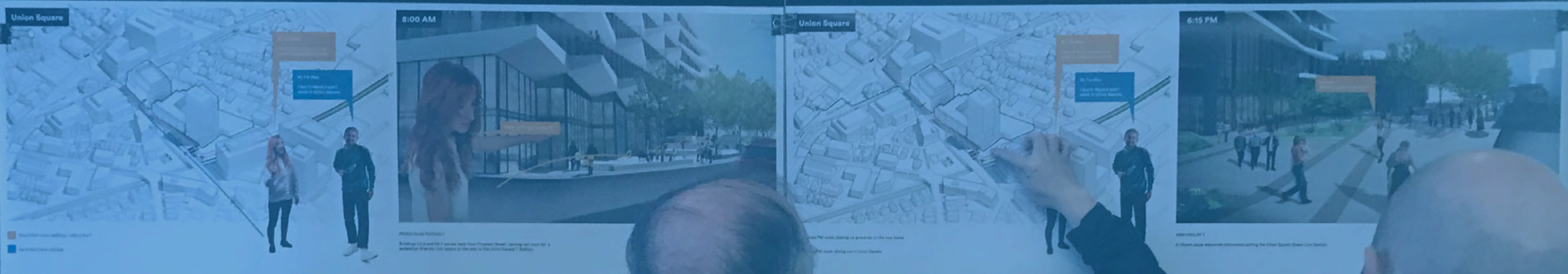


D2.3





WHAT WE HEARD





What's your feedback?



Architectural diversity relates to Union Square

Vibrant livable communities

More active program at station & screening of non-active elements

Jagged balconies are uninviting

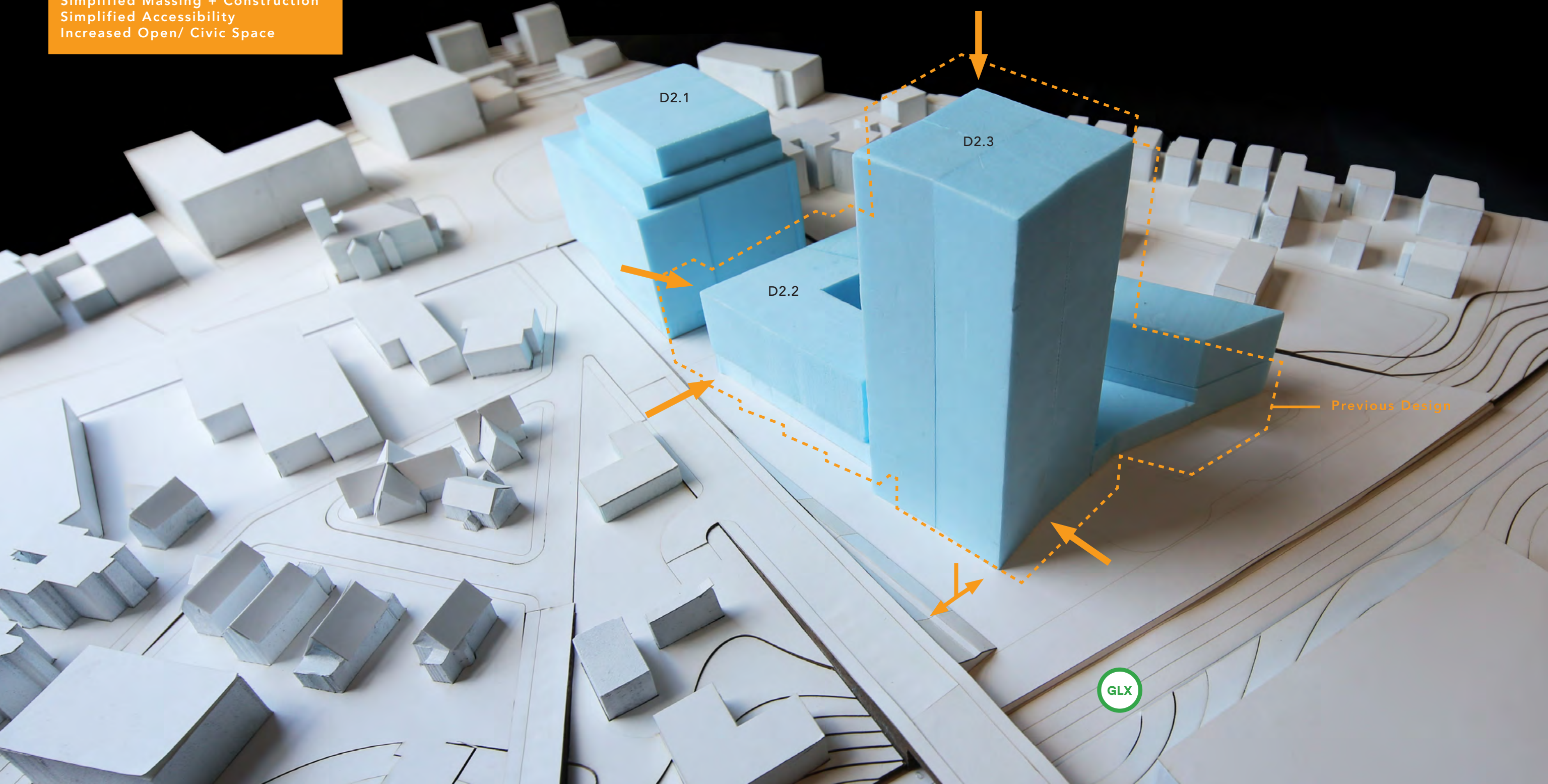
Sensitivity of sightlines

Where the indoor civic space will go?

Can we add a bus turn-out at prospect Hill Bridge - MBTA?

How does the traffic get managed?

Optimized Scale
Simplified Massing + Construction
Simplified Accessibility
Increased Open/ Civic Space



D2.1

D2.3

D2.2

Previous Design





**HOW CAN WE CREATE
A NEW LANDMARK
FOR UNION SQUARE?**

A photograph of a stone tower on a hill. The tower is built from grey stone blocks and has a crenellated top. It sits on a large, white, cylindrical base. An American flag flies from a tall pole on top of the tower. The scene is set against a clear blue sky, with several bare trees in the foreground and background. The ground is a grassy hillside.

HISTORICAL PROMINENCE

A scenic view from a stone-walled observation deck overlooking a city skyline. The foreground features a curved concrete walkway and a low concrete wall. To the left, a large, textured stone wall is visible. In the background, a dense line of green trees separates the deck from a city skyline under a clear blue sky. The skyline includes several prominent skyscrapers, with the tallest one being a blue glass tower. An orange speech bubble with white text is overlaid on the right side of the image.

**BUT ALSO A
PUBLIC AMENITY**

English High School and Latin High School, Somerville, Mass.

18007

HISTORIC

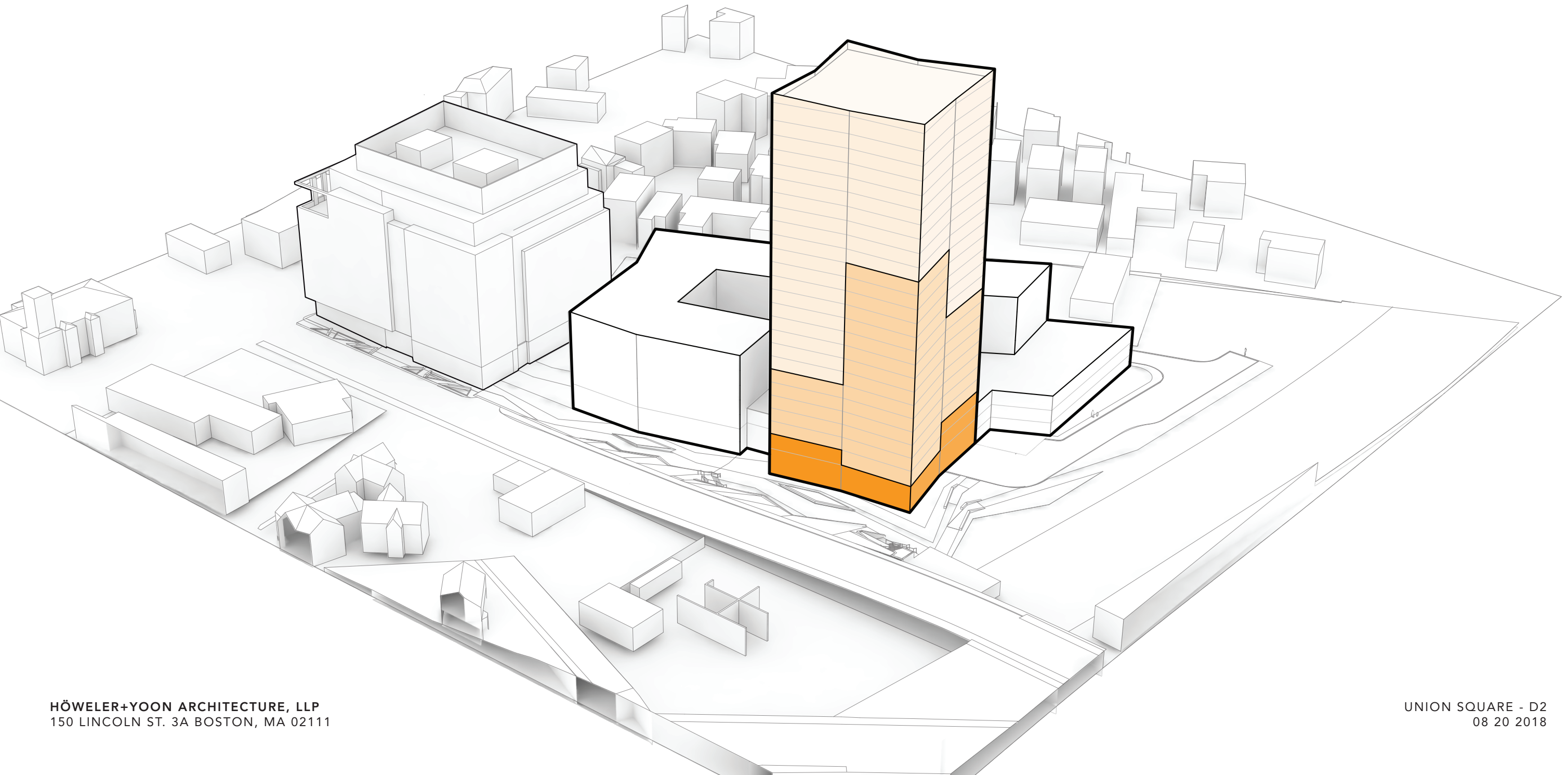
**BUT ALSO A
PUBLIC AMENITY**

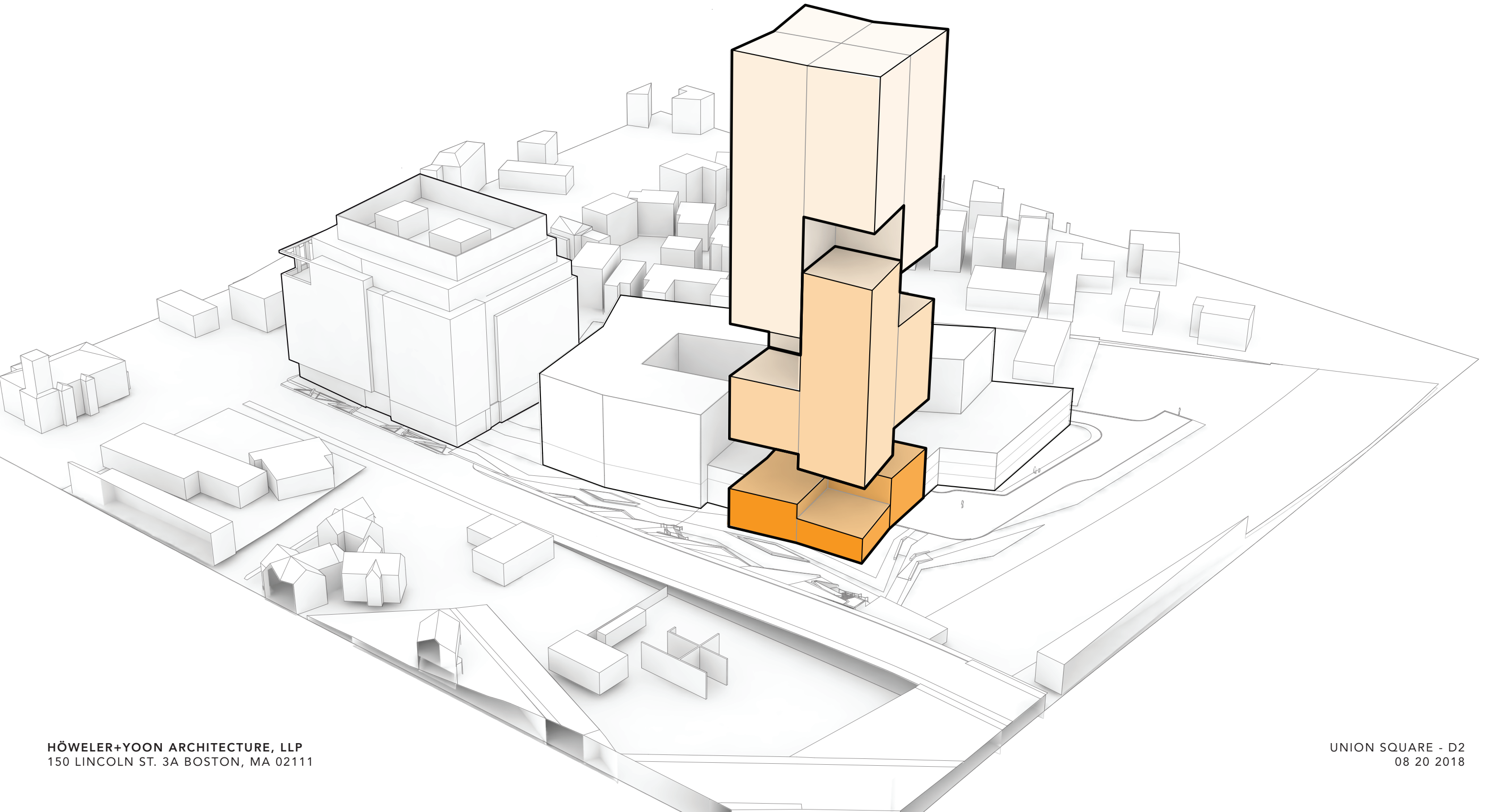


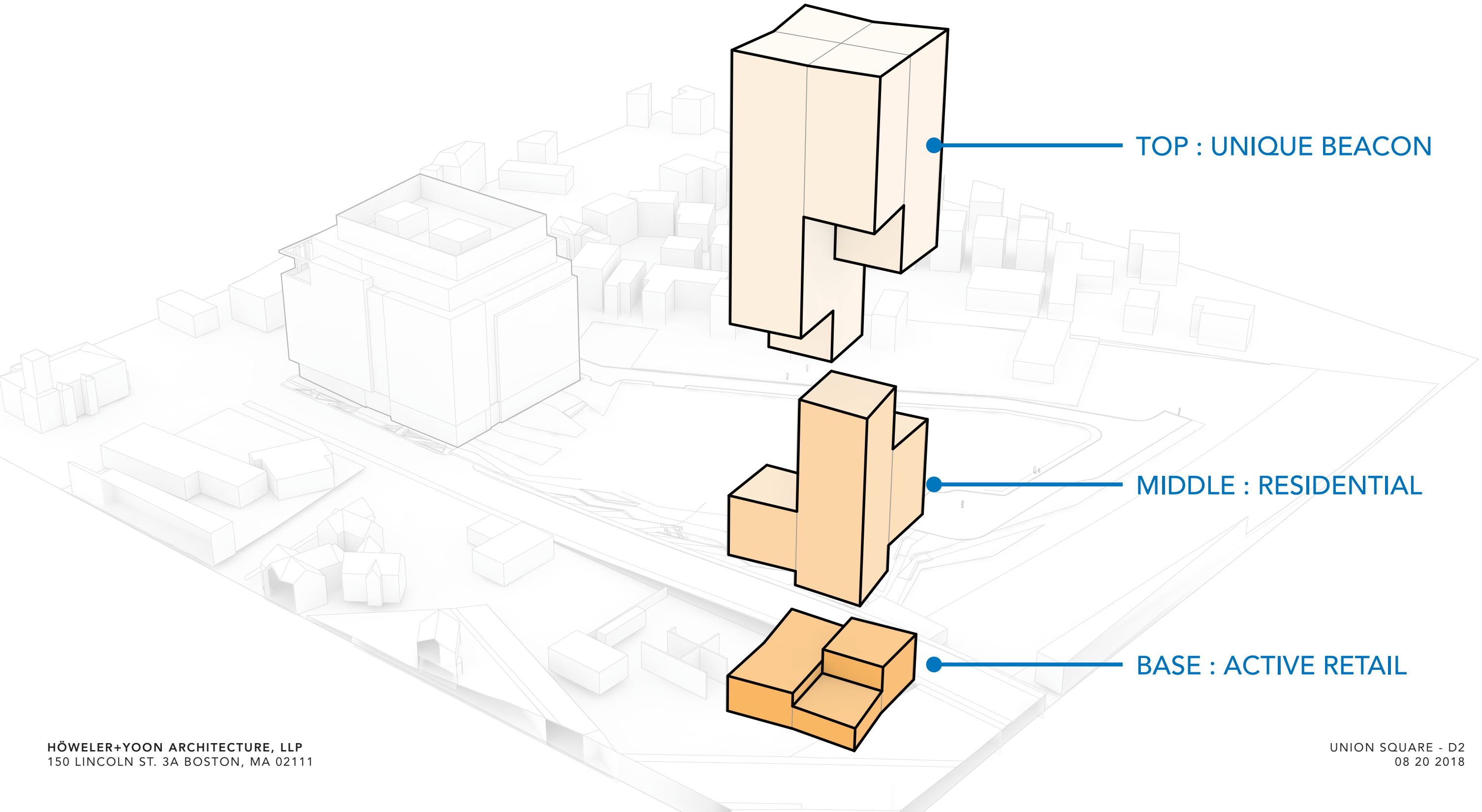
CULTURAL
LANDMARK











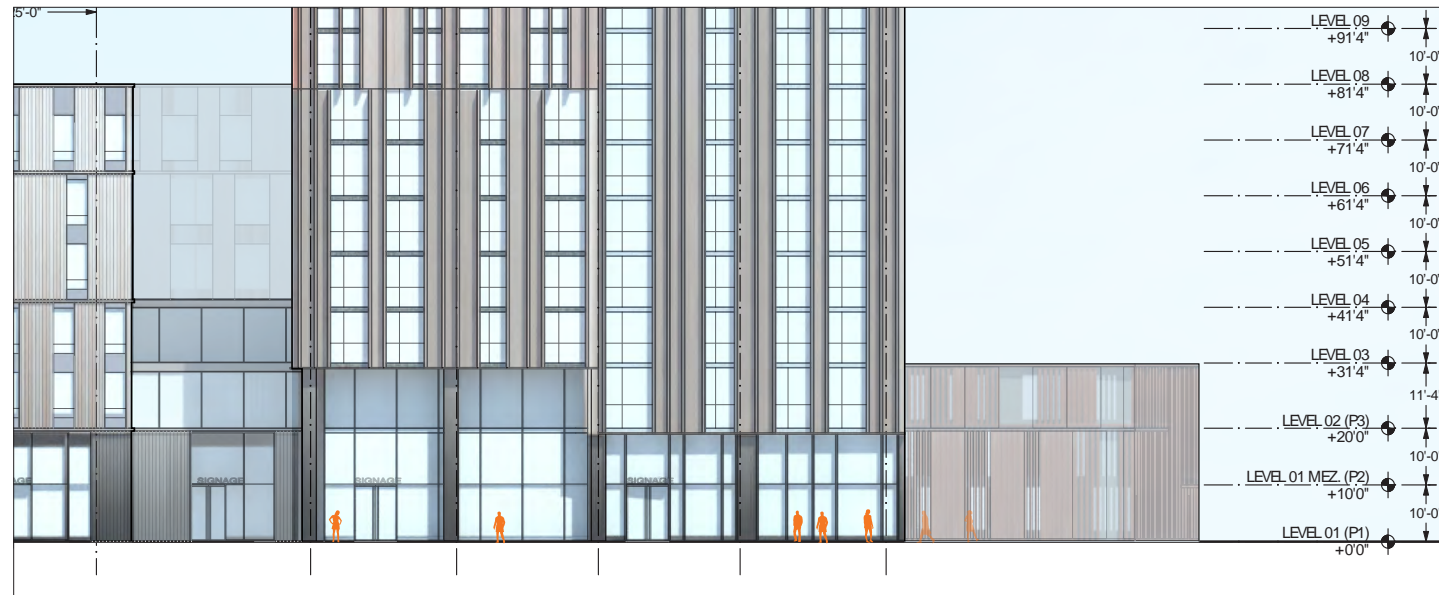
TOP : UNIQUE BEACON

MIDDLE : RESIDENTIAL

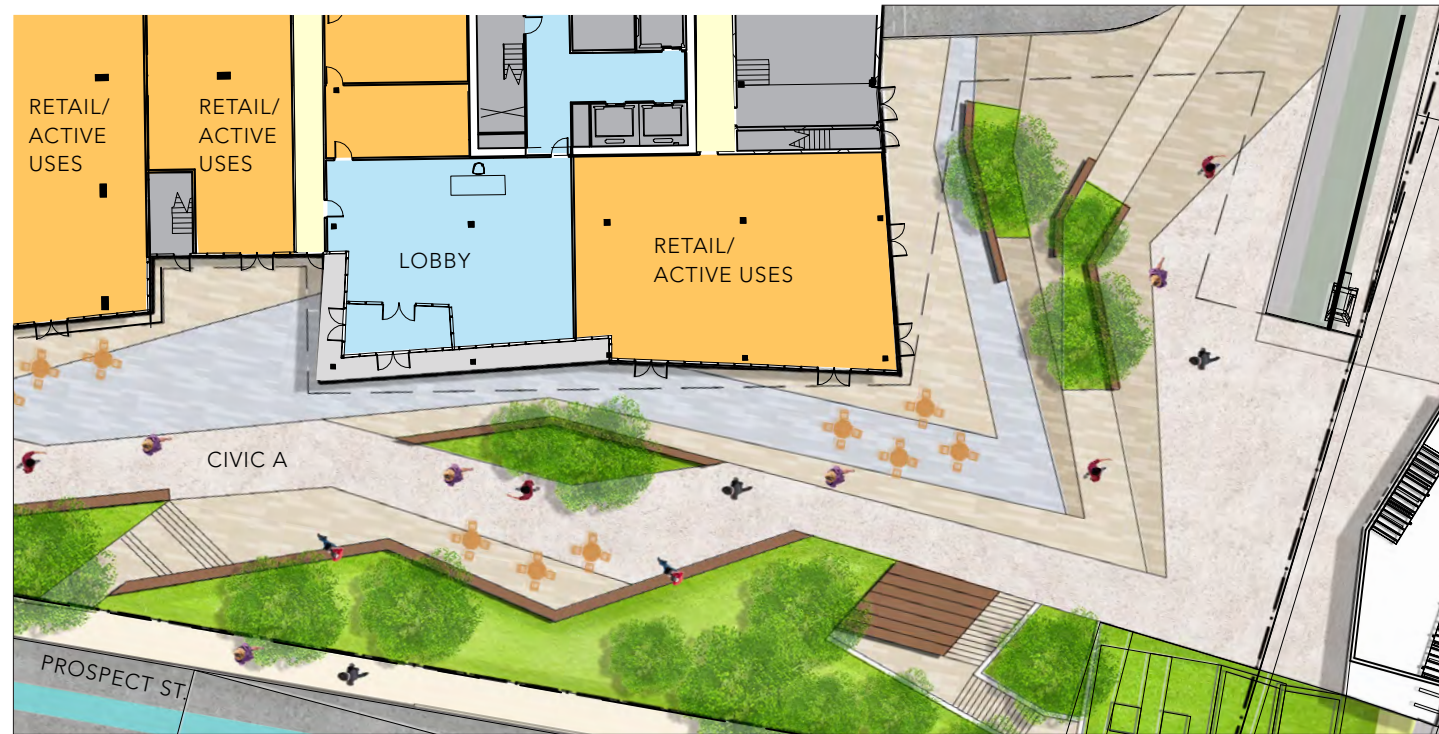
BASE : ACTIVE RETAIL

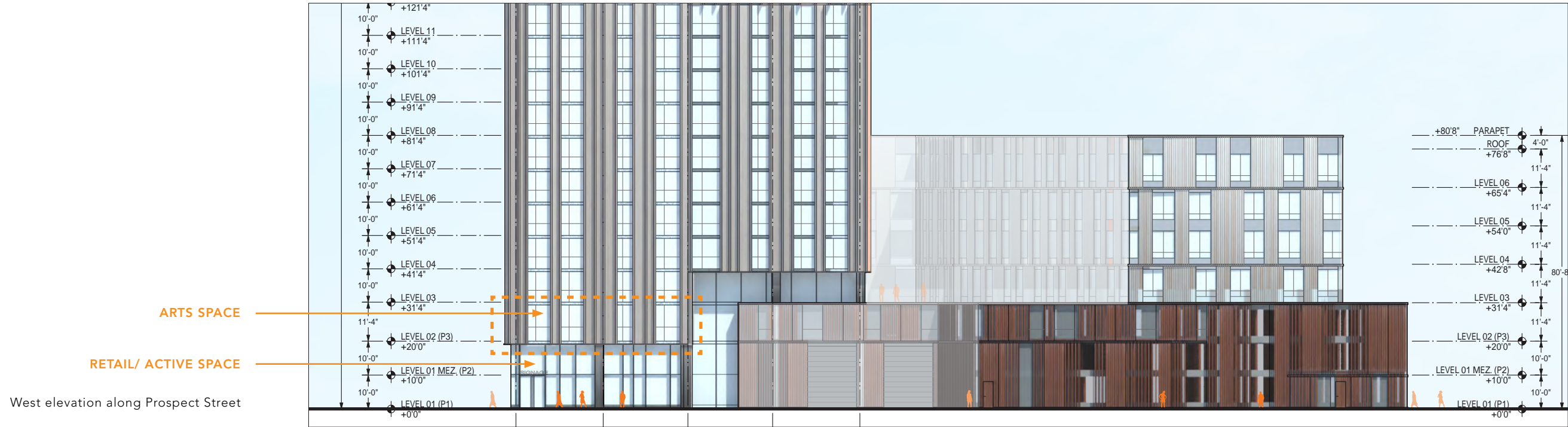


West elevation along
Prospect Street

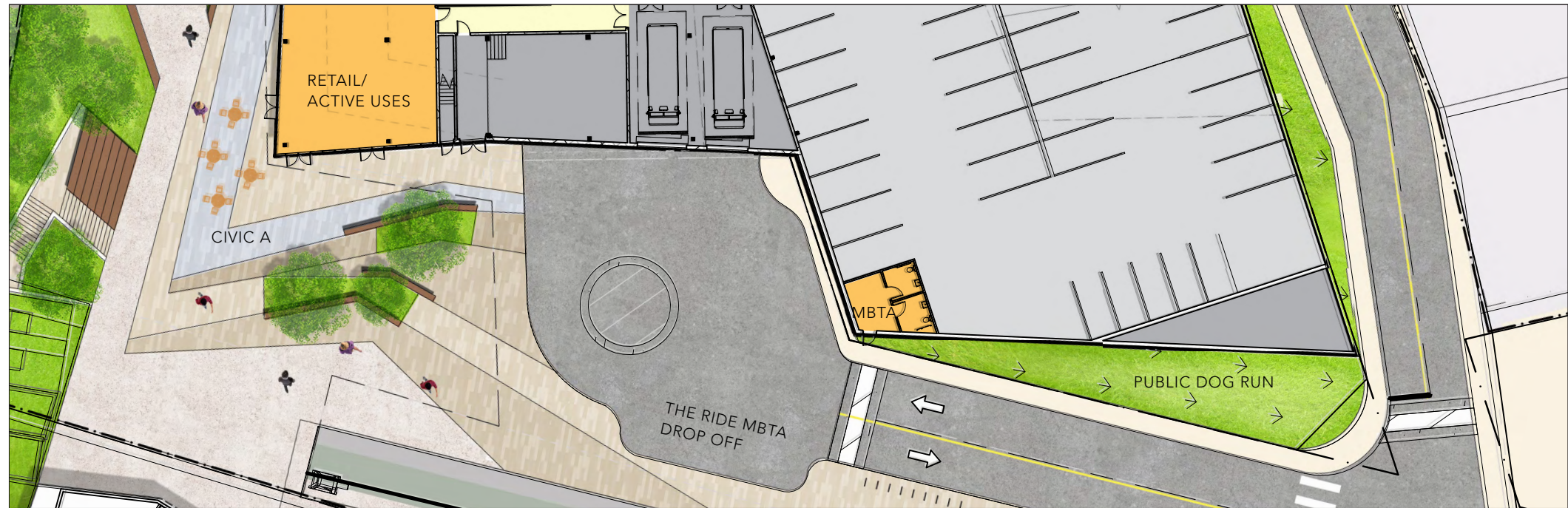


Ground level plan at Civic A
along Prospect Street





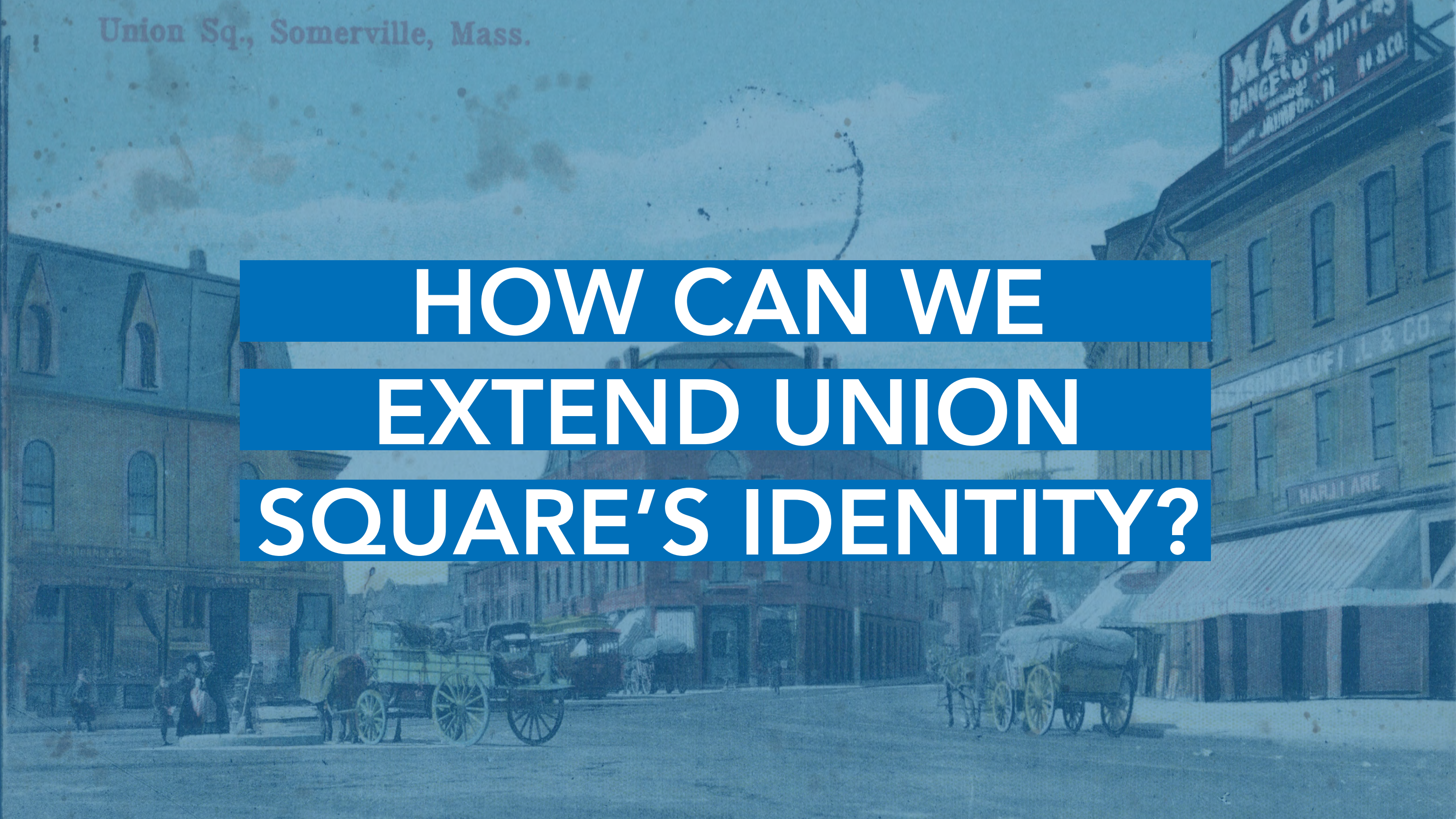
West elevation along Prospect Street

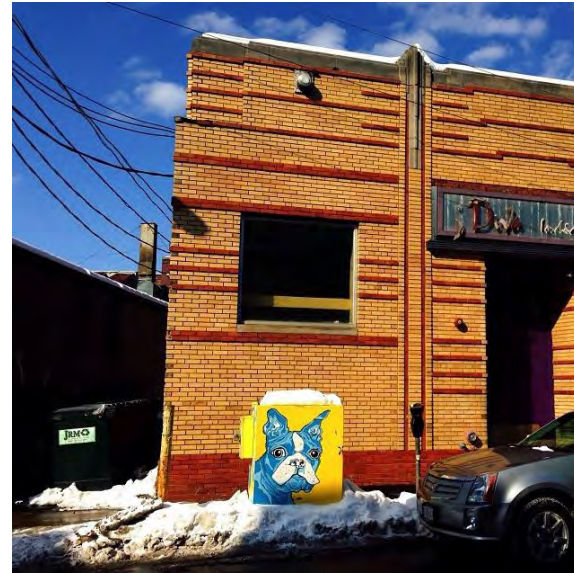


Ground level plan at Civic A along The Ride MBTA Drop Off

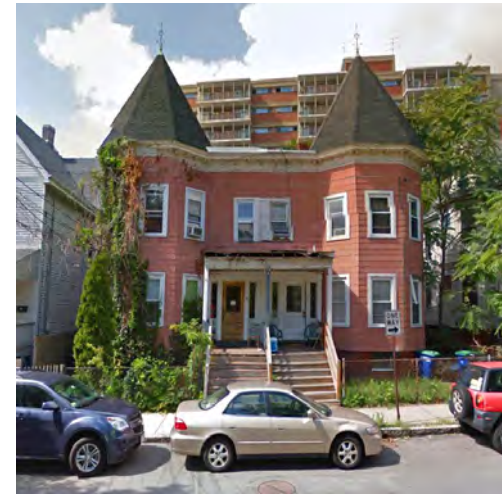
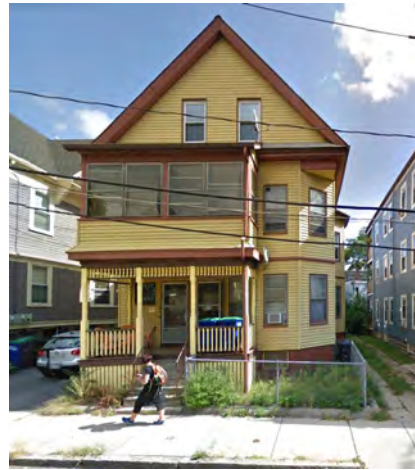
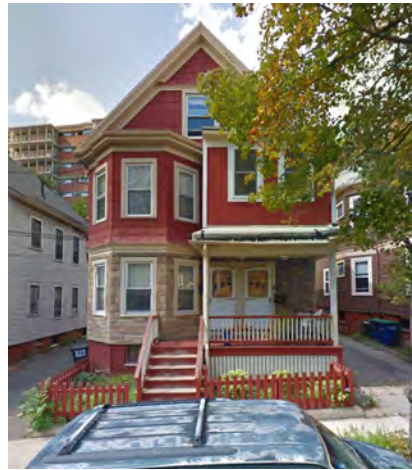
Union Sq., Somerville, Mass.

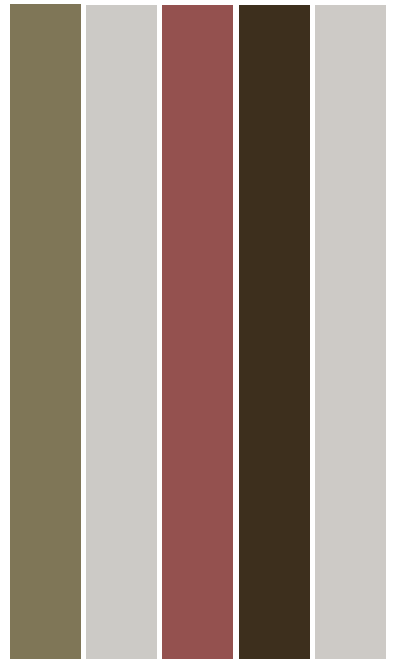
**HOW CAN WE
EXTEND UNION
SQUARE'S IDENTITY?**

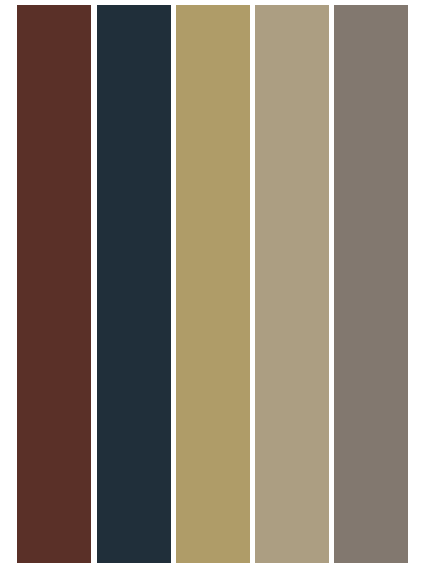


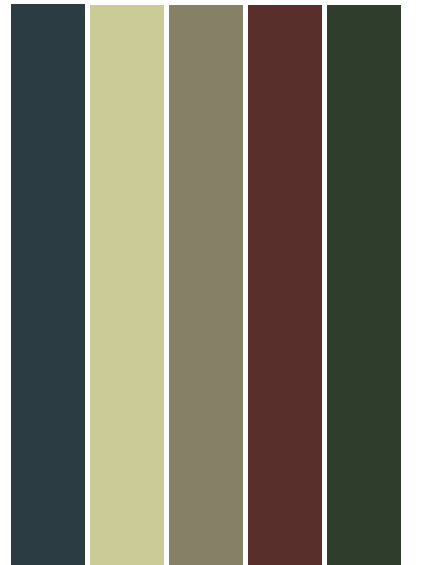
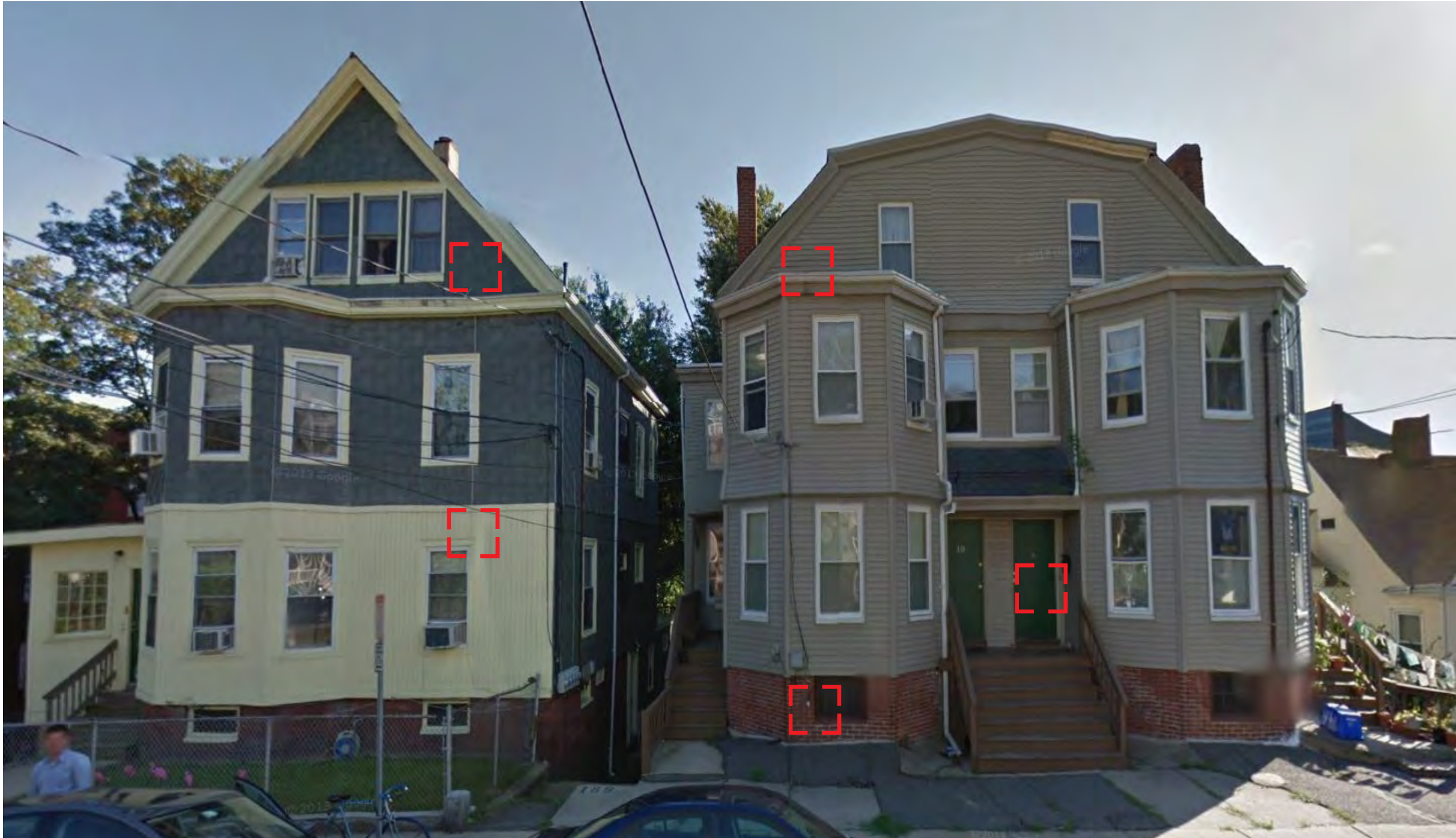












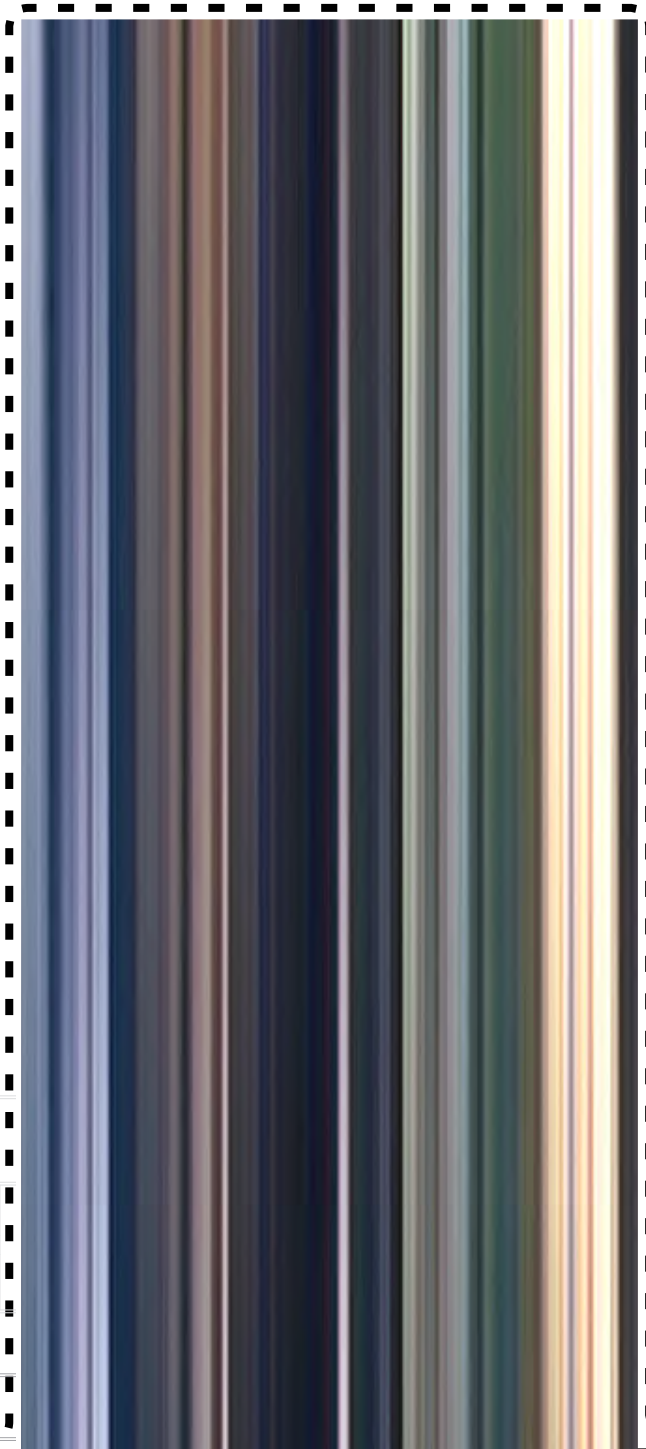
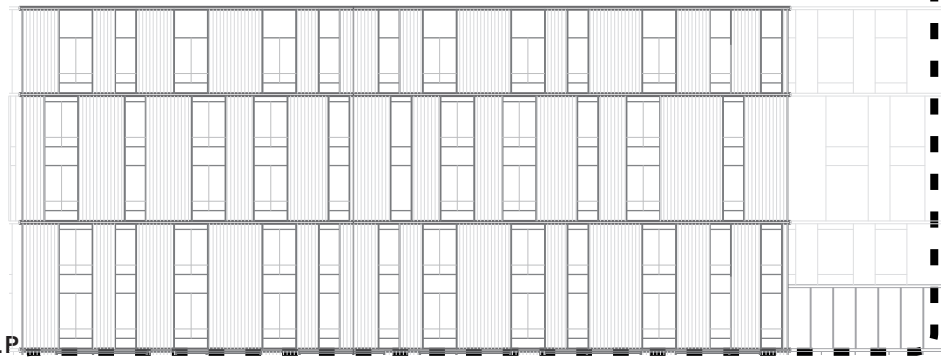


Copyright © Steve Dunwell





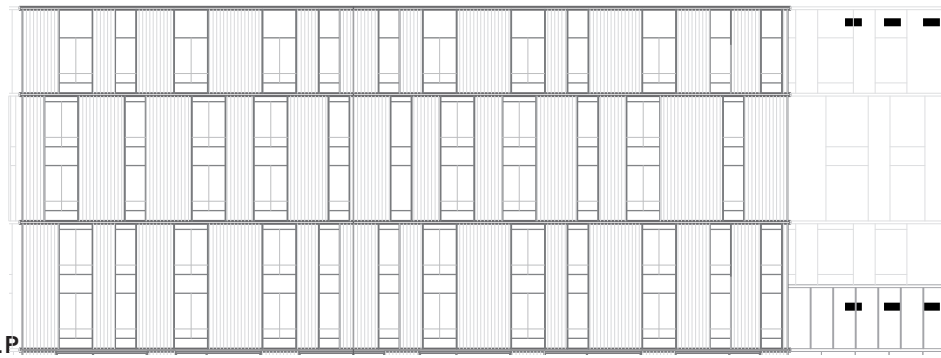
DIVERSITY
=
VIBRANCY

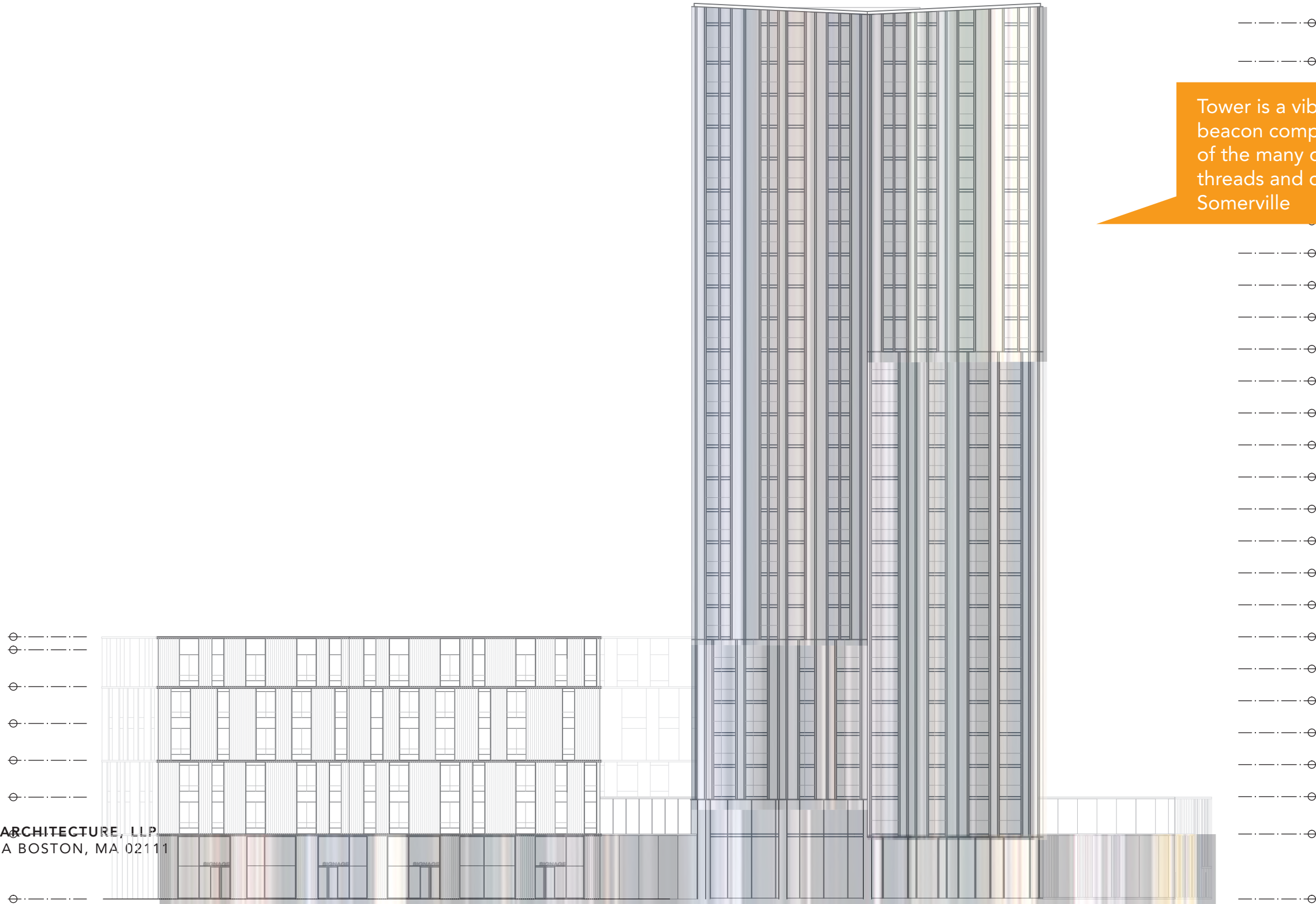


Tower is a vibrant beacon composed of the many diverse threads and colors of Somerville



Tower is a vibrant beacon composed of the many diverse threads and colors of Somerville





Tower is a vibrant beacon composed of the many diverse threads and colors of Somerville



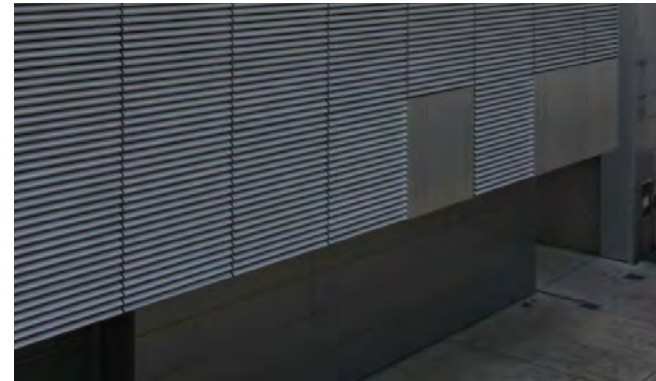




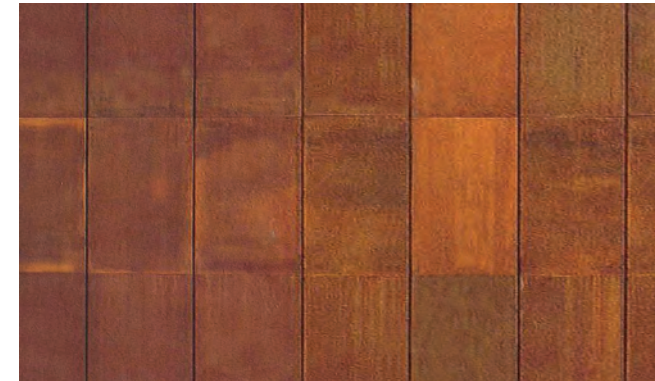
ARTICULATED METAL PANELS
WALL TYPE- 01



ALUMINUM WINDOW WALL
WINDOW TYPE- 01



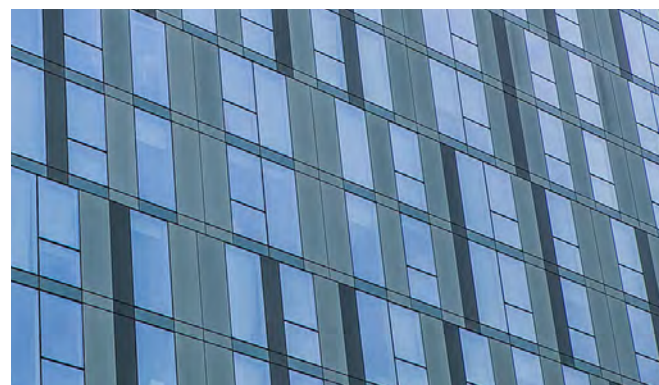
ALUMINUM METAL LOUVERS
WALL TYPE- 03



METAL PANEL
WALL TYPE- 04



ARTICULATED METAL PANELS
WALL TYPE- 02



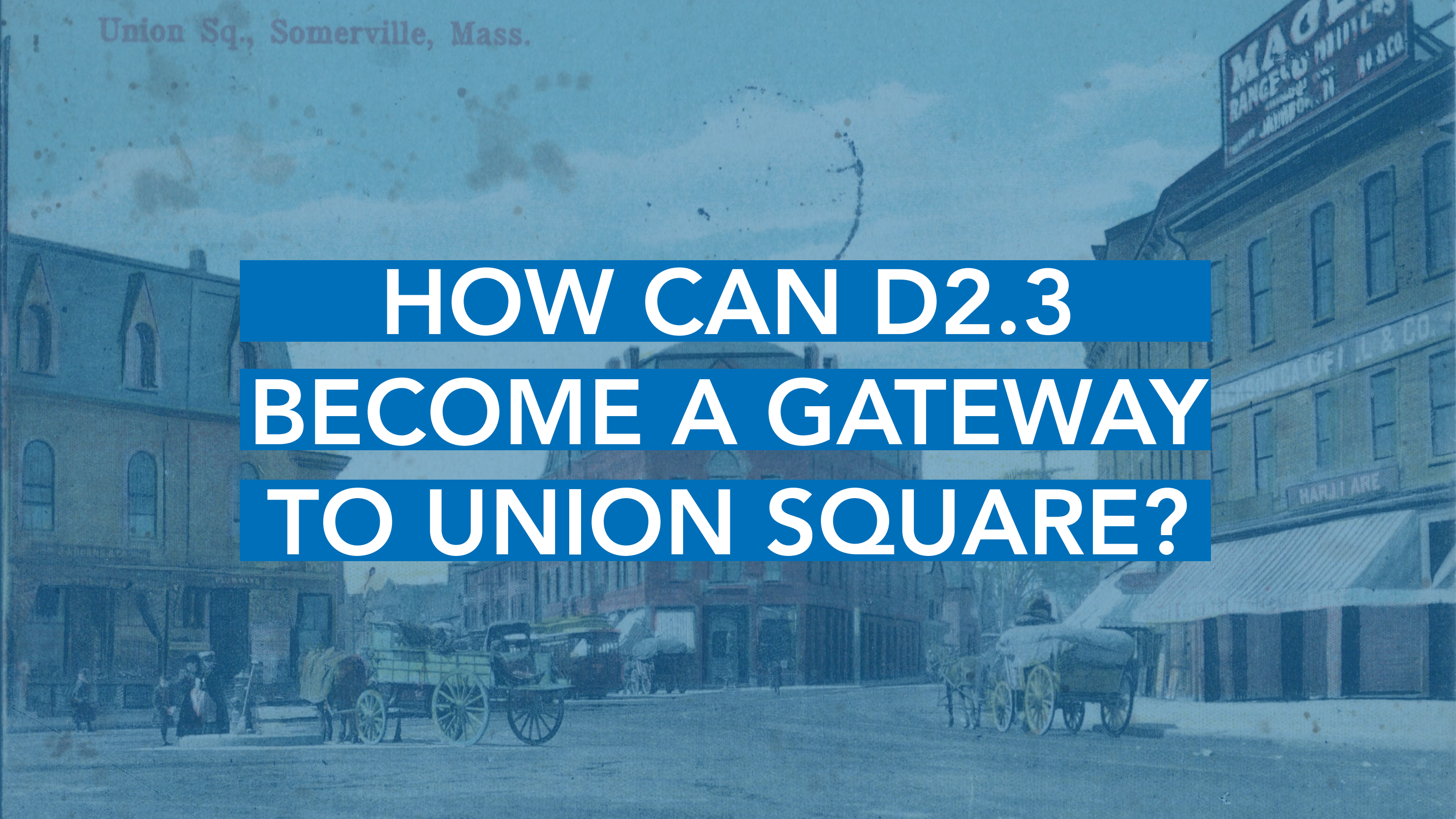
SPANDREL INFILL PANEL
WINDOW TYPE- 02

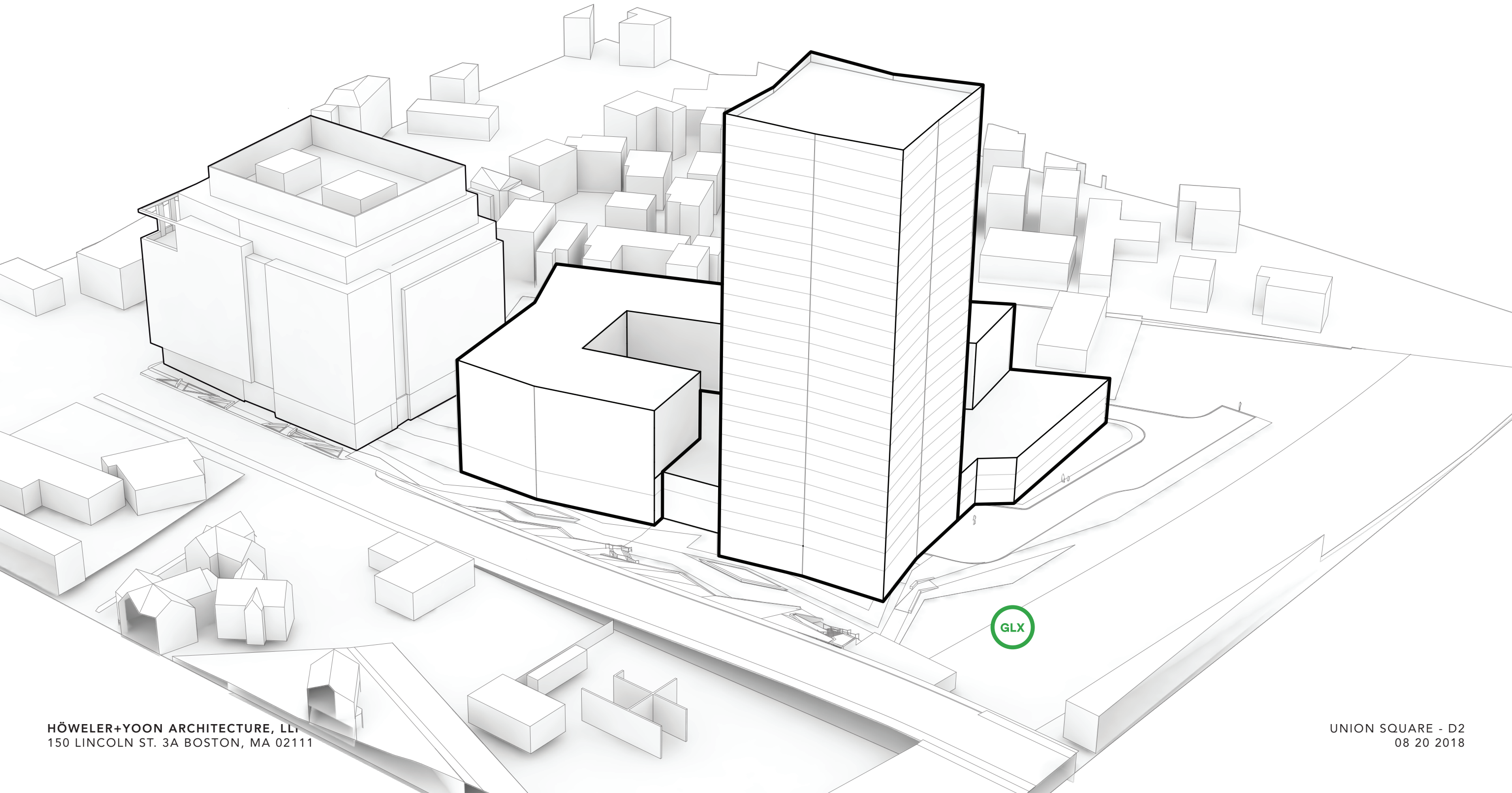


ALUMINUM STORE FRONT
WINDOW TYPE- 03

Union Sq., Somerville, Mass.

**HOW CAN D2.3
BECOME A GATEWAY
TO UNION SQUARE?**







BY CREATING
PLAZA BY GLX





PROSPECT HILL
MONUMENT

