

D2.1



The background image shows a group of people, including two men in the foreground, looking at a large display of architectural renderings for Union Square. The renderings depict various scenes of the square at different times of day, from 8:00 AM to 6:15 PM. The people are seen from behind, looking at the display. One man is pointing at a rendering. The overall scene is a public consultation or presentation of the proposed changes to Union Square.

# WHAT WE HEARD





# What's your feedback?



**NO STERILE BUILDINGS (KENDALL SQUARE)**

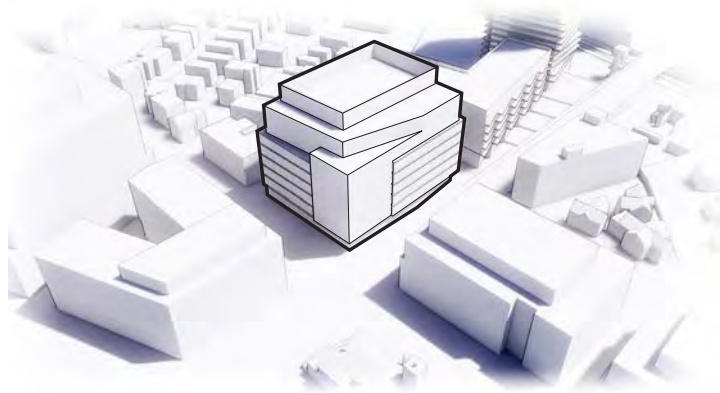
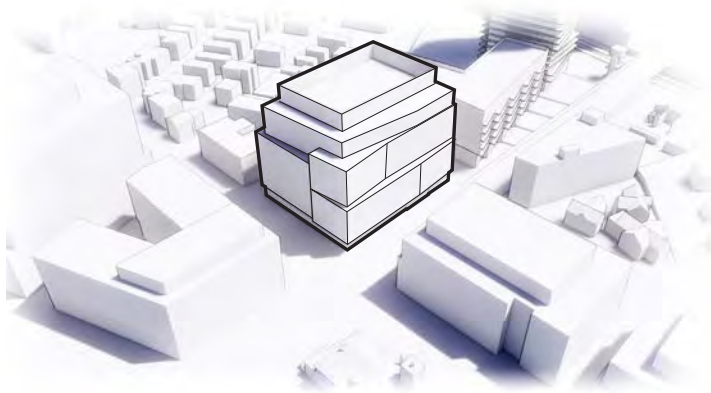
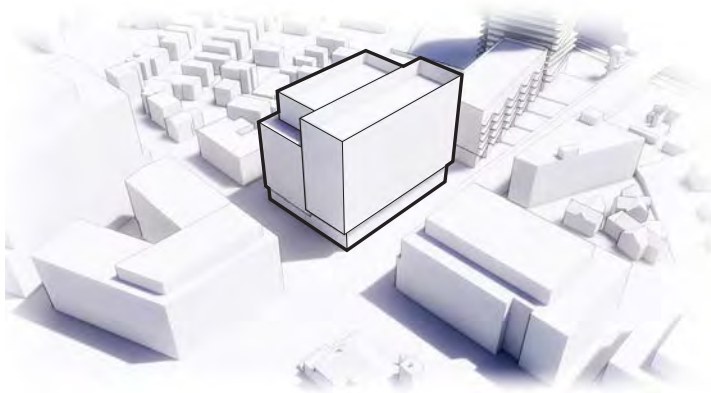
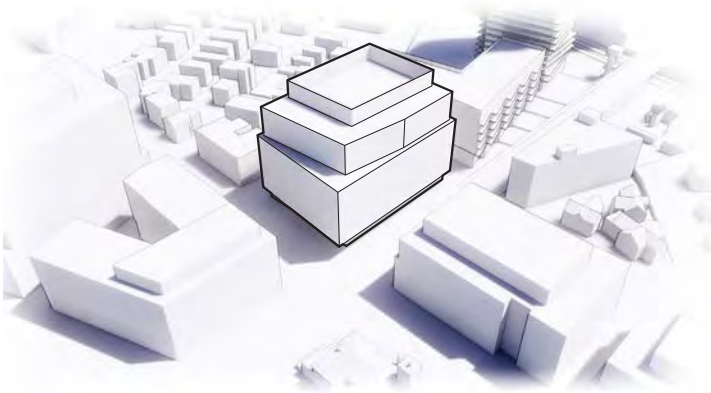
**MORE CORNER PROMINENCE**

**BUILDING MATERIALS RELATION TO UNION SQUARE**

**GROUND FLOOR SCALE RELATION TO NEIGHBORHOOD**

*I deeply worry that we are losing the authenticity and small neighborhood feel of U.S. and replacing with sterile buildings like Kendall Sq.*

*We want civic spaces inside buildings: space for library, community meetings, senior center, youth center, etc.  
How does the traffic get managed?*



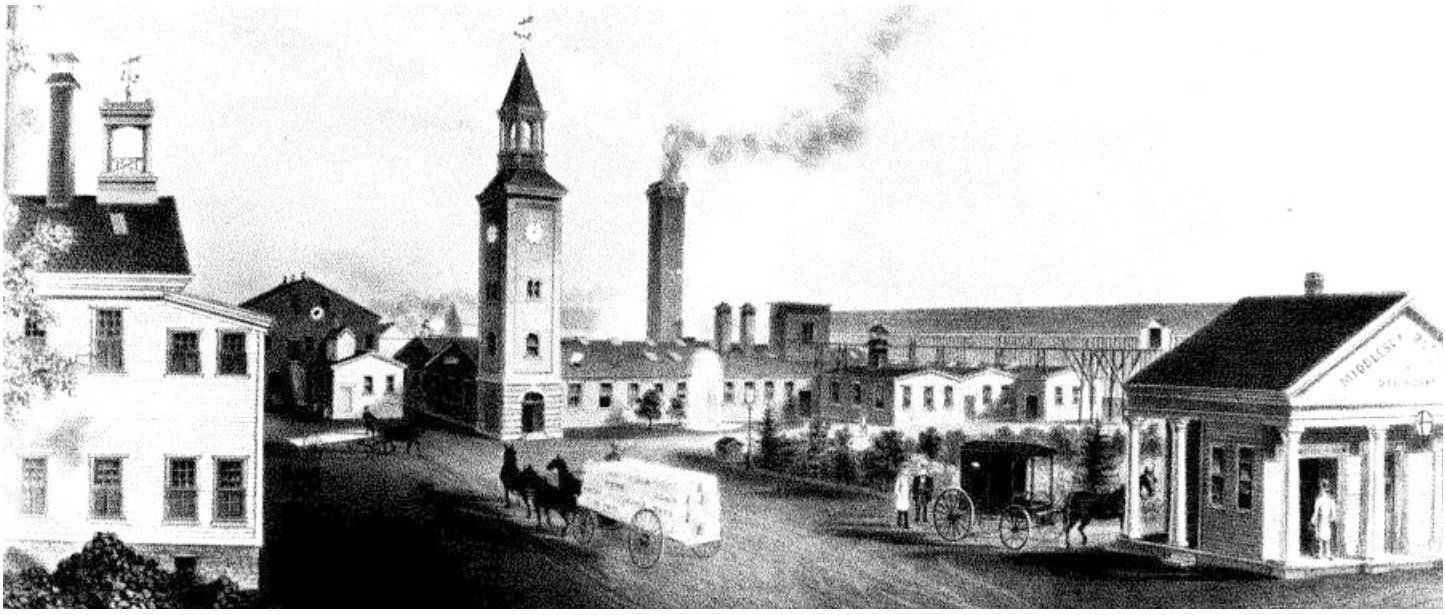
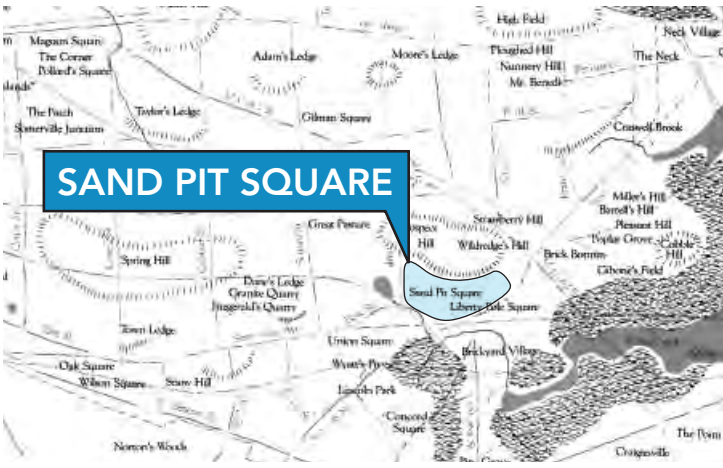


Union Sq., Somerville, Mass.

# TRANSFORMATION INTO A VIBRANT EMPLOYMENT CENTER







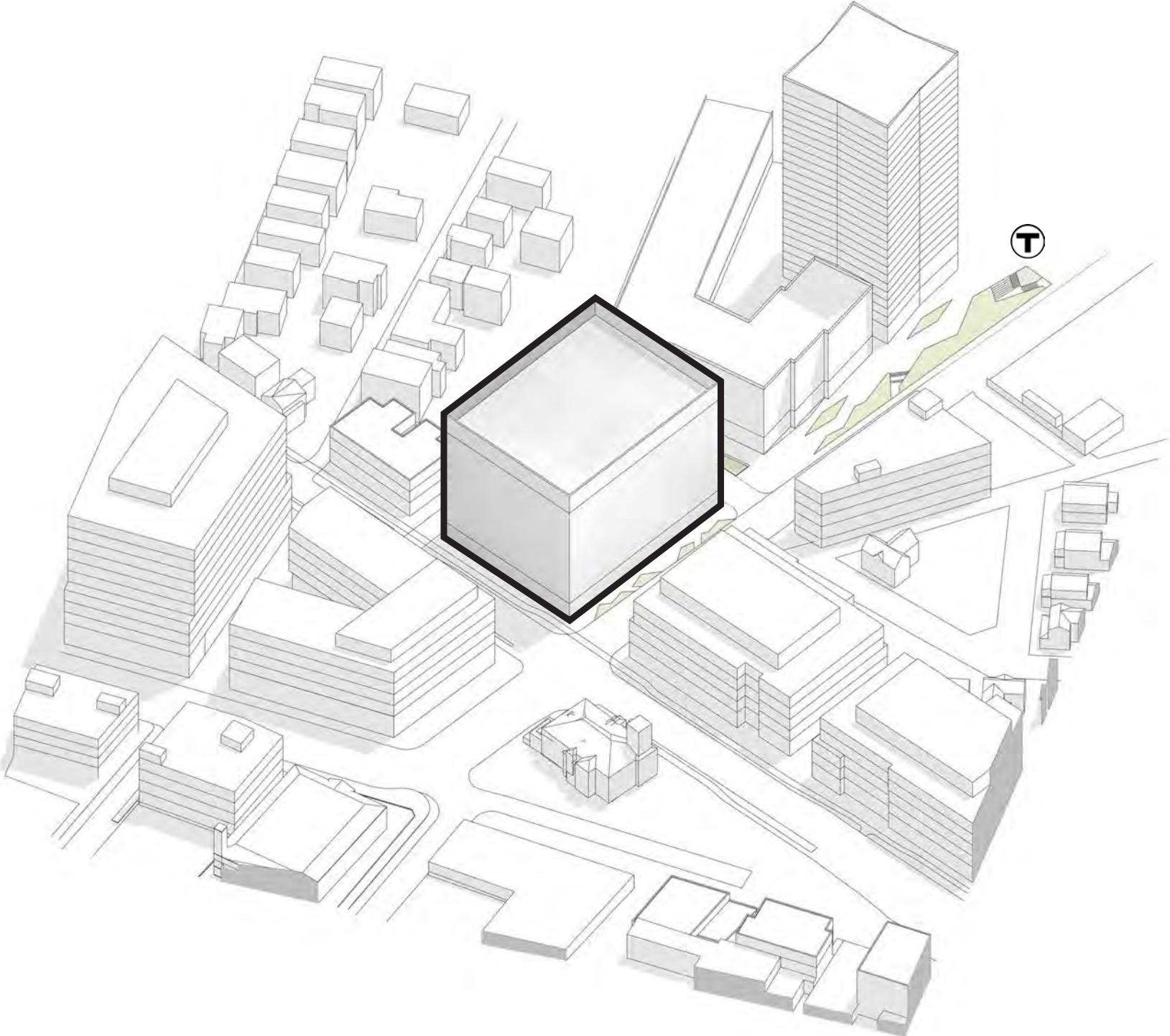


Union Sq., Somerville, Mass.

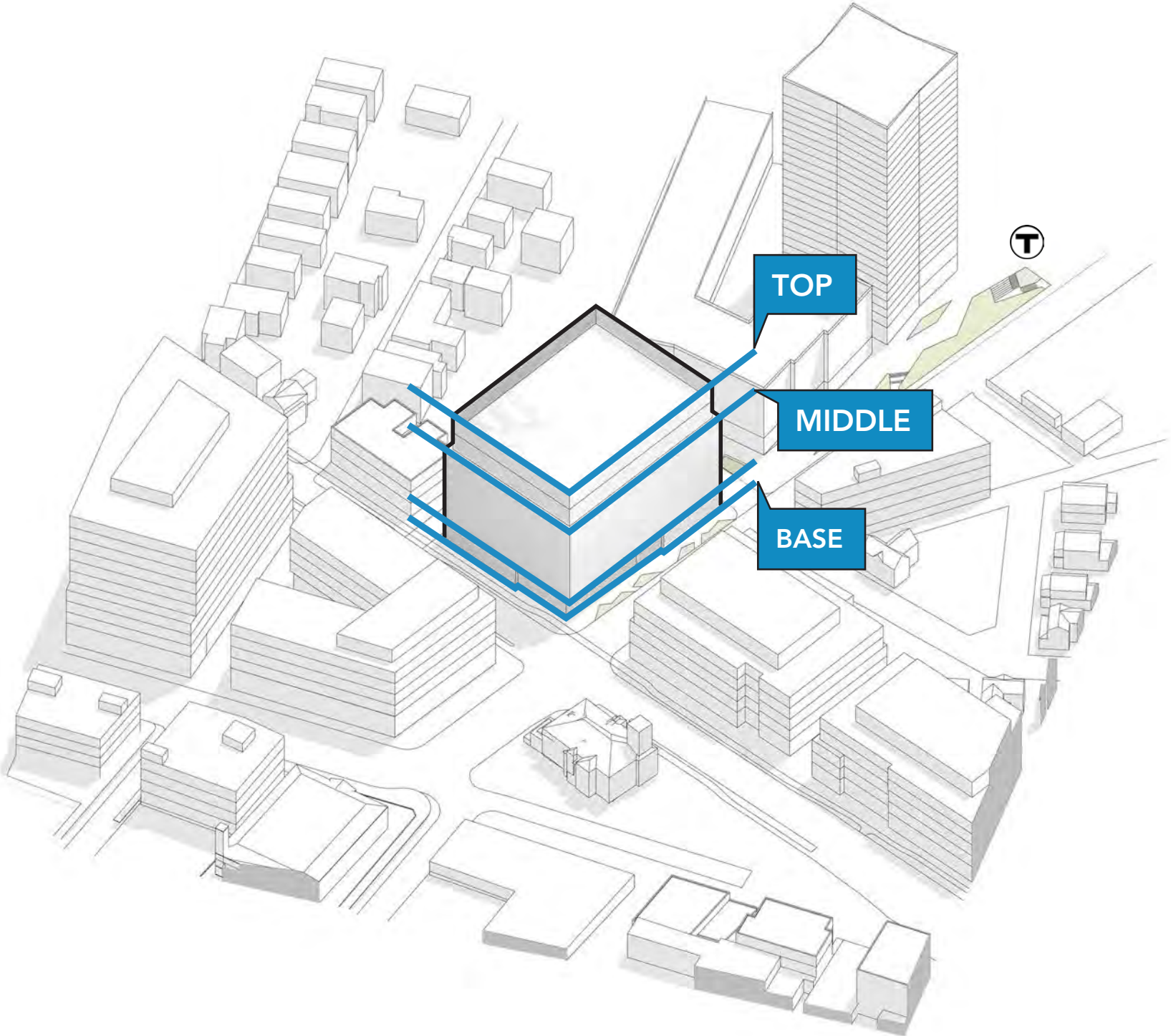
# URBAN RESPONSE IN CONTEXT OF UNION SQUARE



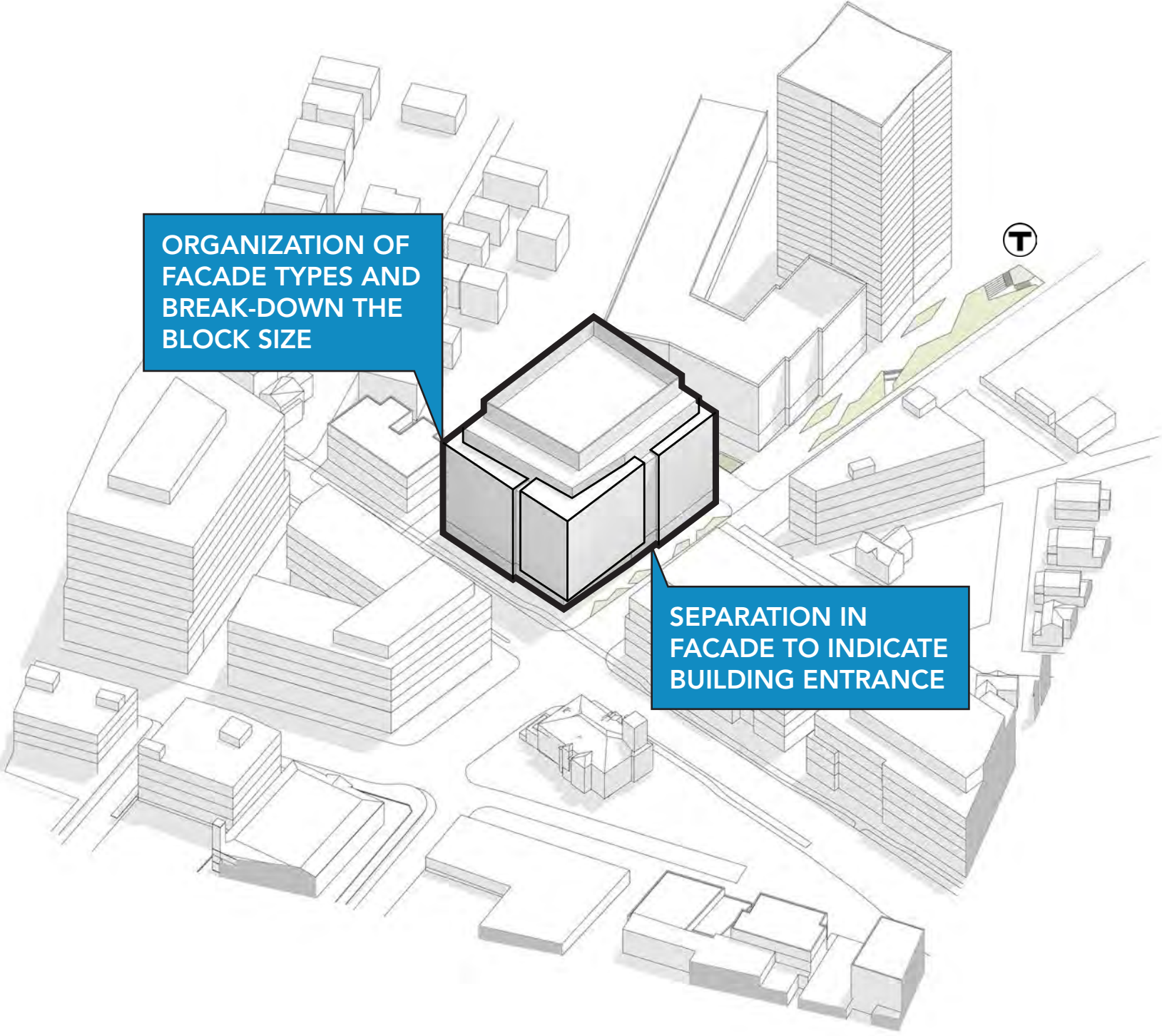








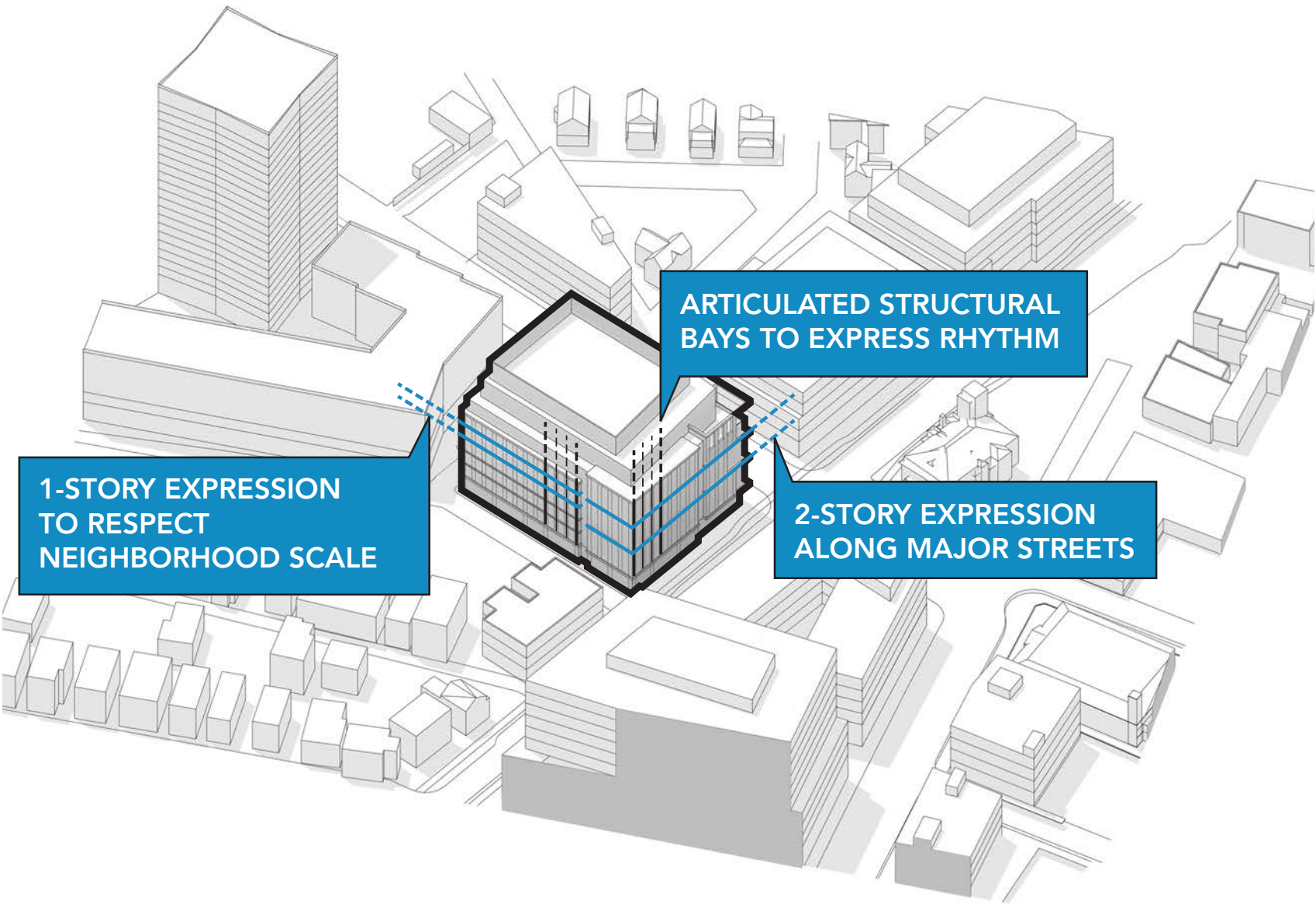




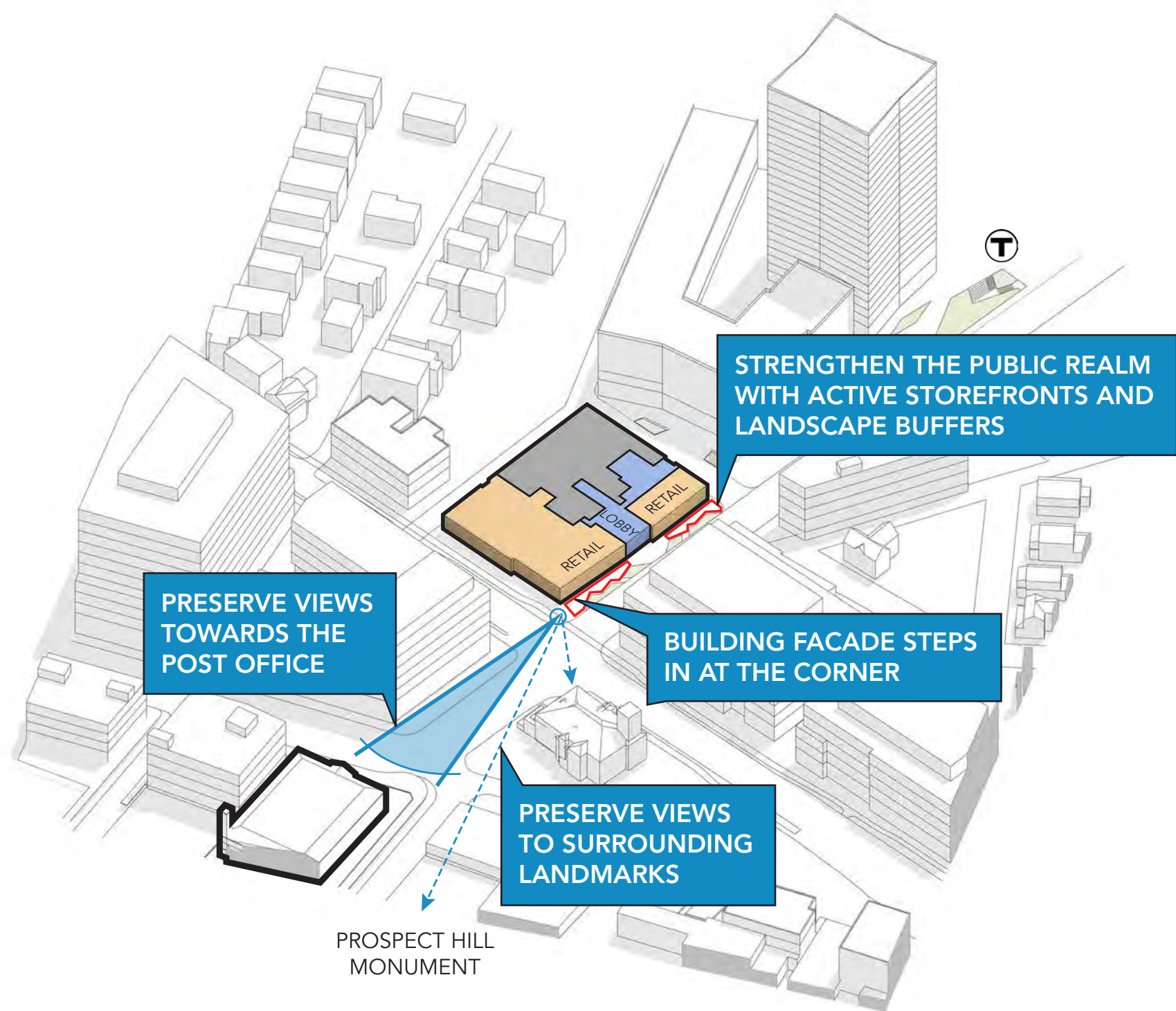
ORGANIZATION OF  
FACADE TYPES AND  
BREAK-DOWN THE  
BLOCK SIZE

SEPARATION IN  
FACADE TO INDICATE  
BUILDING ENTRANCE

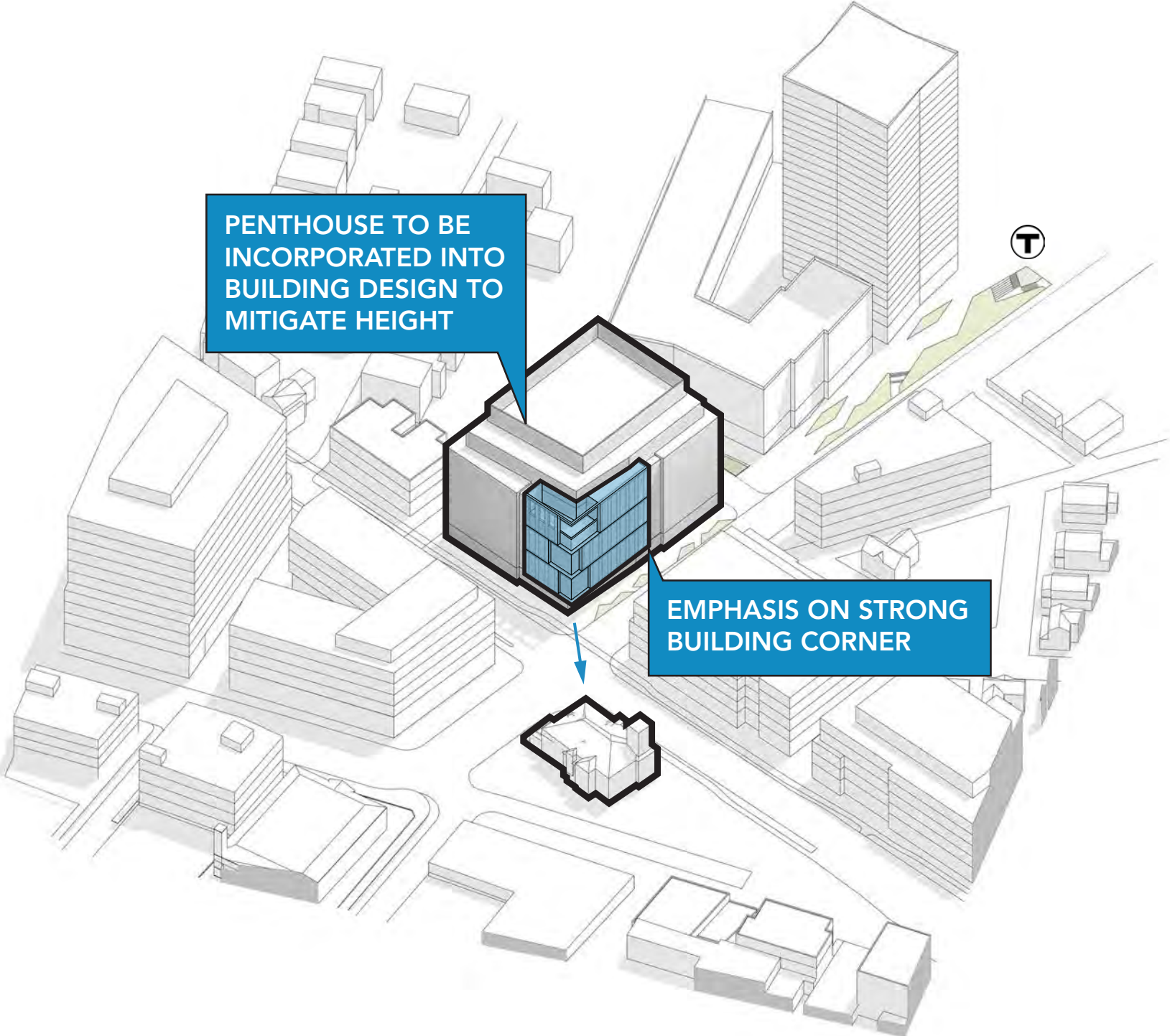












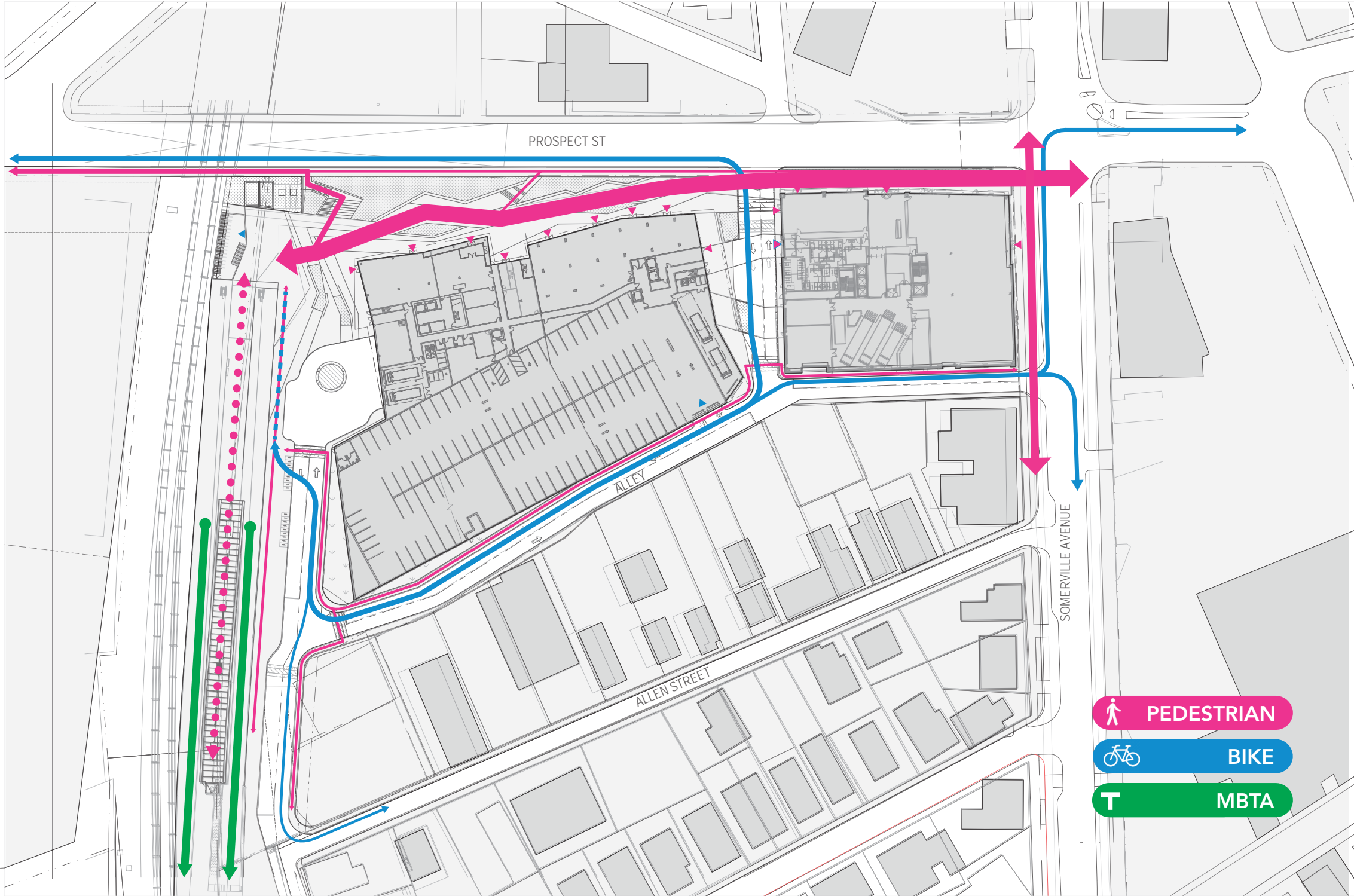




# CRAFTING THE PUBLIC REALM









GROUND LEVEL FLOOR PLAN









VIEW ALONG PROSPECT STREET  
TOWARDS POST OFFICE





VIEW ALONG PROSPECT STREET  
TOWARDS POST OFFICE



PROSPECT HILL  
MONUMNET

HISTORIC  
FIREHOUSE

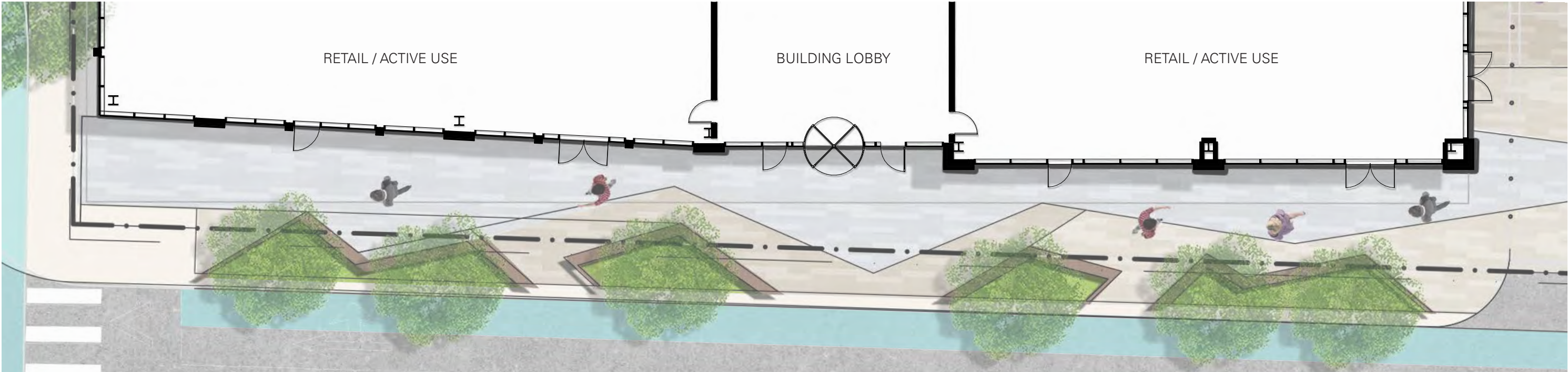
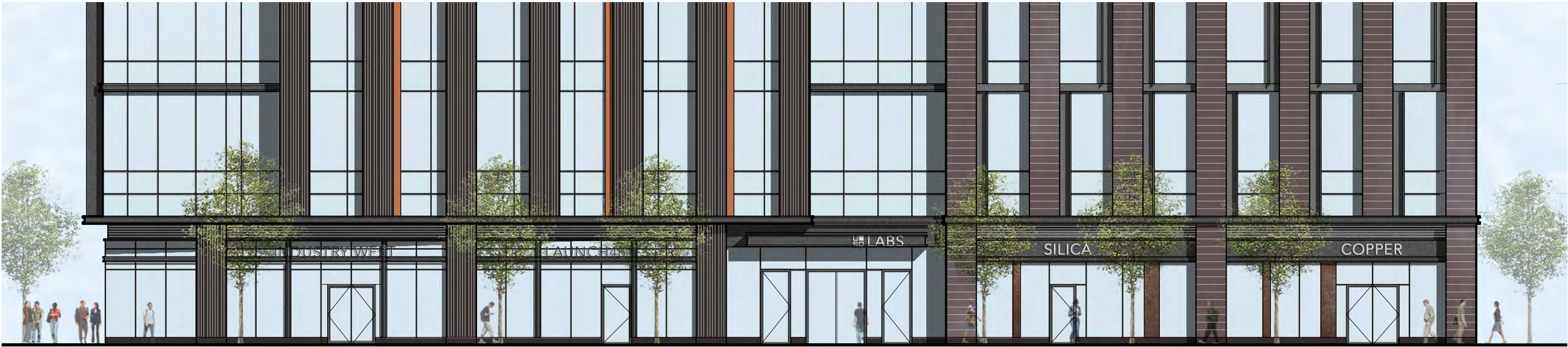
VIEWS TO  
POST OFFICE



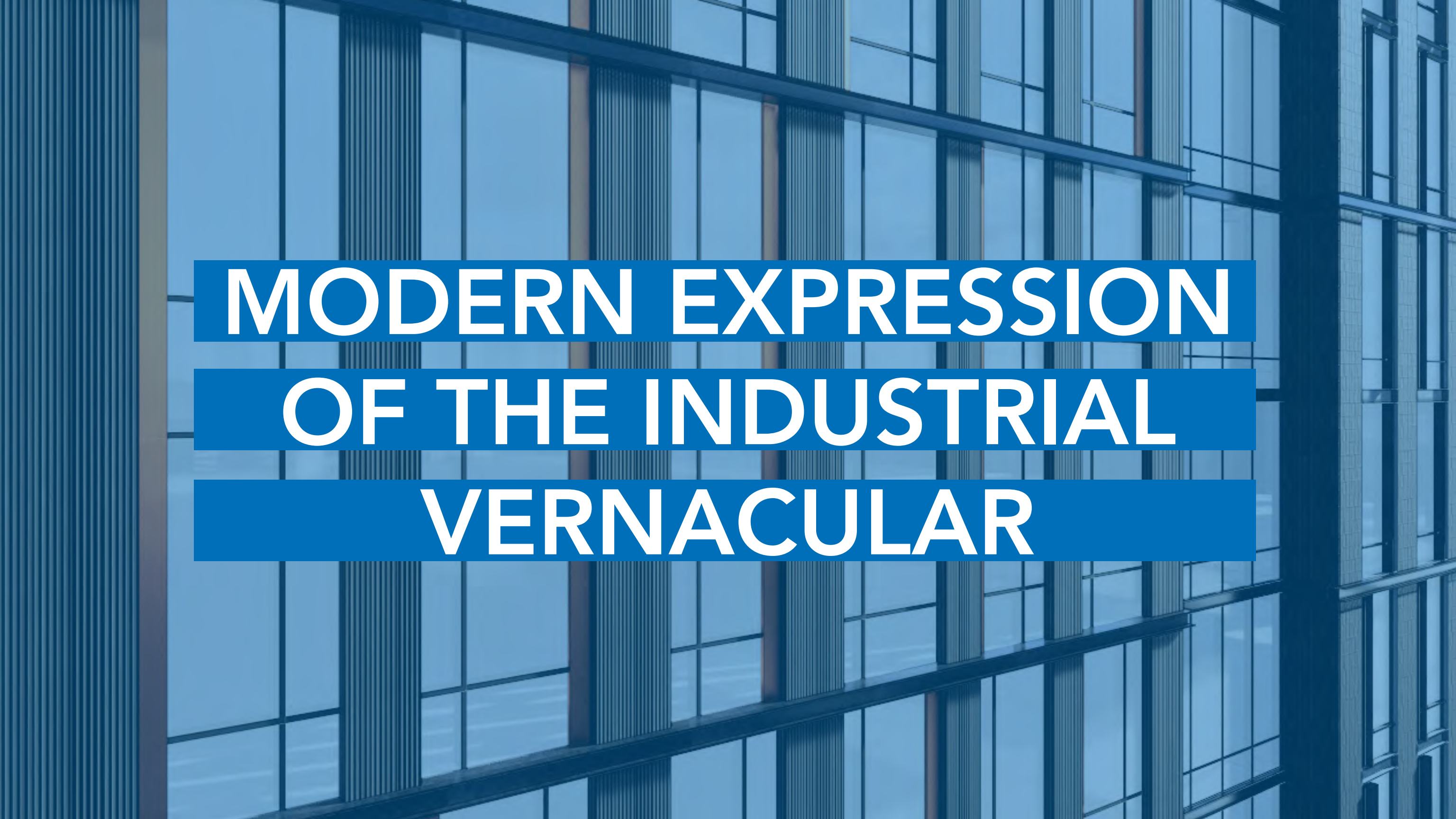
VIEW FROM SOMERVILLE AVENUE  
AND PROSPECT STREET







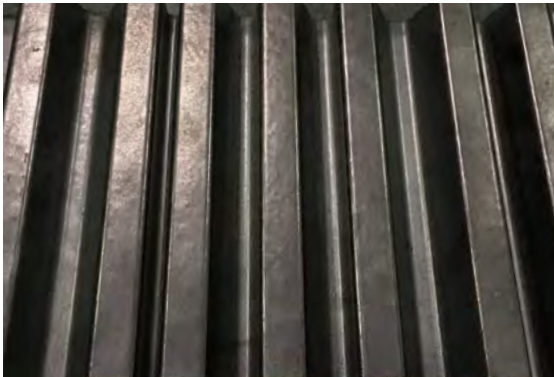
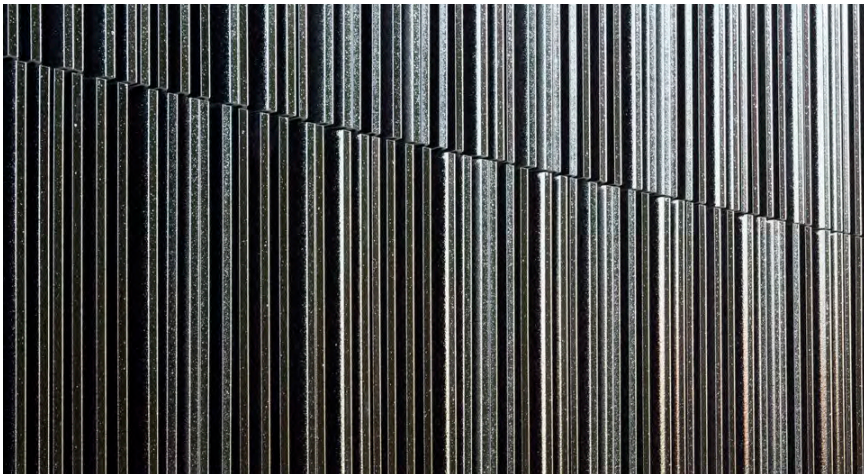


The background of the image is a photograph of a modern building's exterior, featuring a grid of large glass windows and dark structural frames. The entire image has a blue color overlay. Overlaid on this background is a three-line title in white, bold, sans-serif capital letters, each line contained within a solid blue rectangular bar.

# MODERN EXPRESSION OF THE INDUSTRIAL VERNACULAR



MATERIAL PALETTE









VIEW FROM UNION SQUARE PLAZA











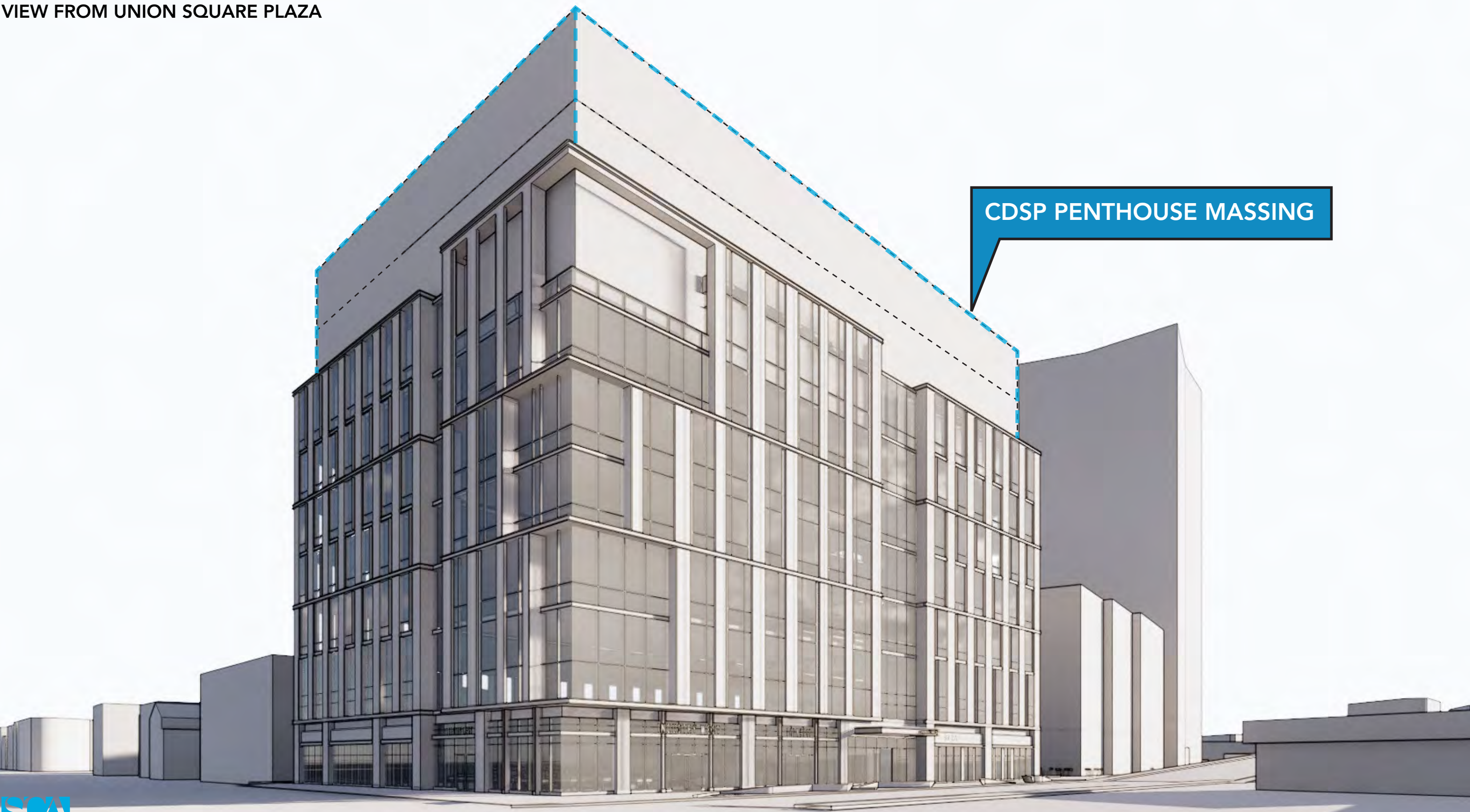


PENTHOUSE  
INTEGRATED INTO  
BUILDING DESIGN

STEPS BACK TO MINIMIZE  
HEIGHT IN RESPECT TO THE  
PLAZA AND NEIGHBORHOOD





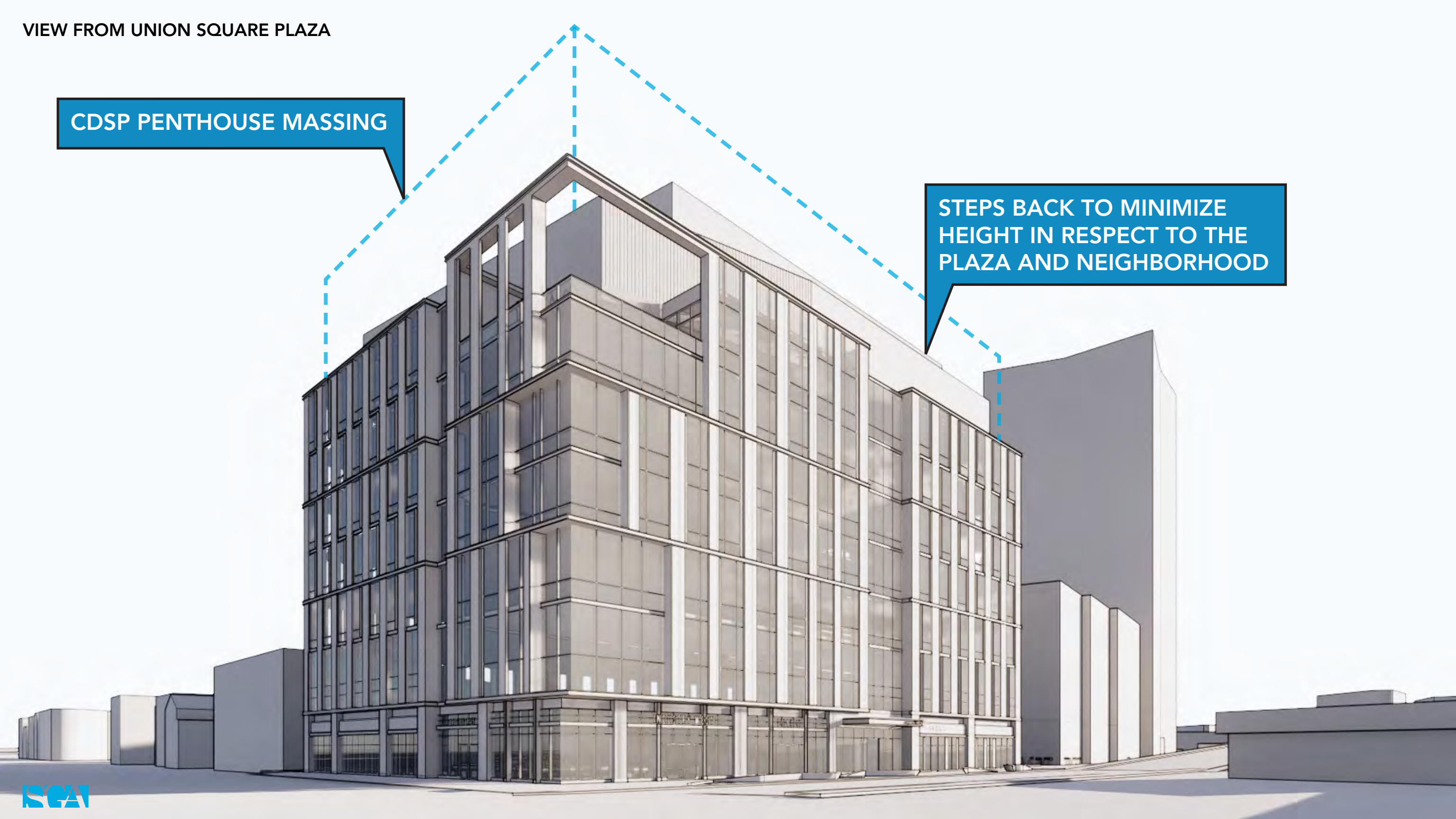


CDSP PENTHOUSE MASSING

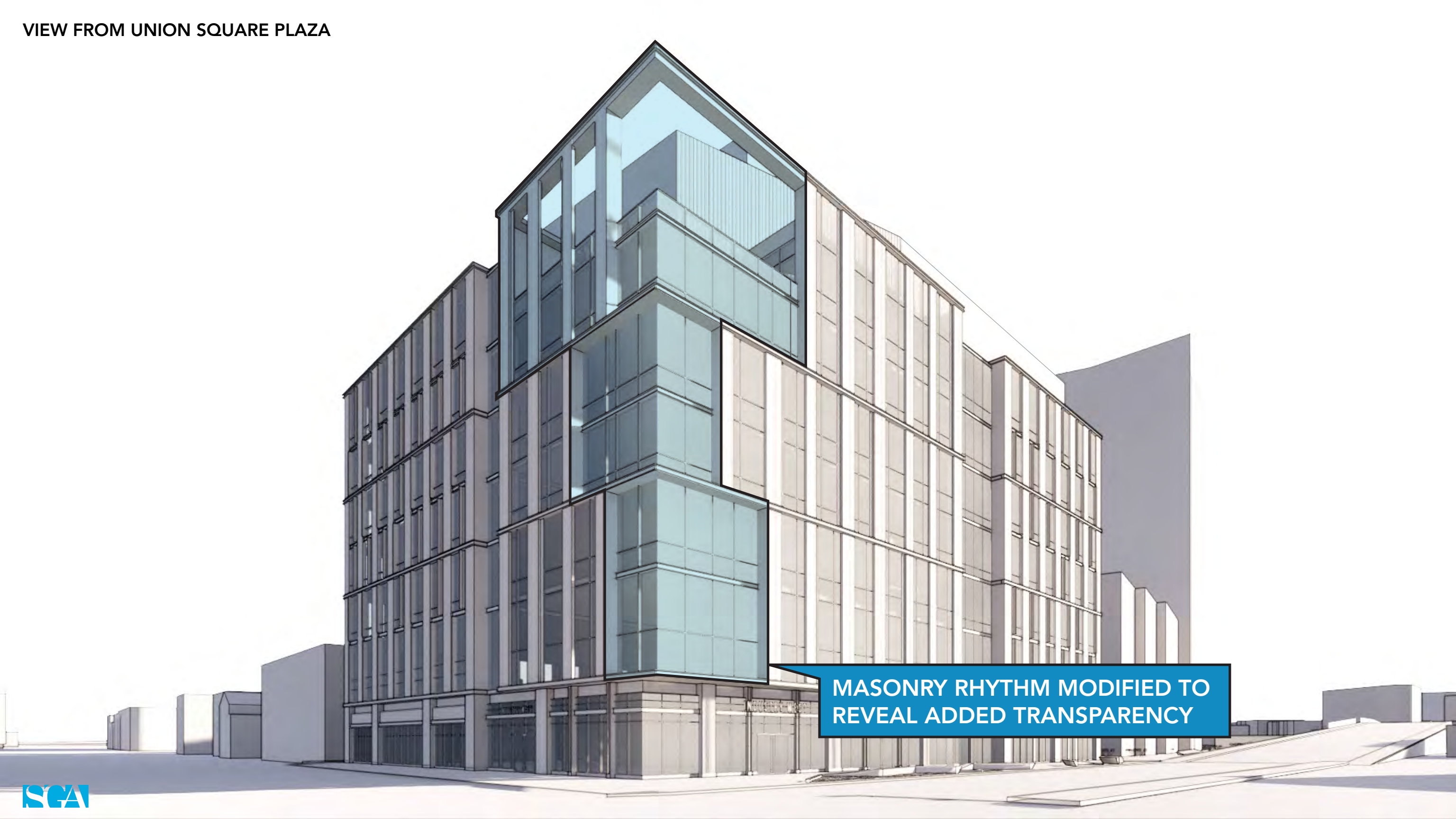


CDSP PENTHOUSE MASSING

STEPS BACK TO MINIMIZE HEIGHT IN RESPECT TO THE PLAZA AND NEIGHBORHOOD

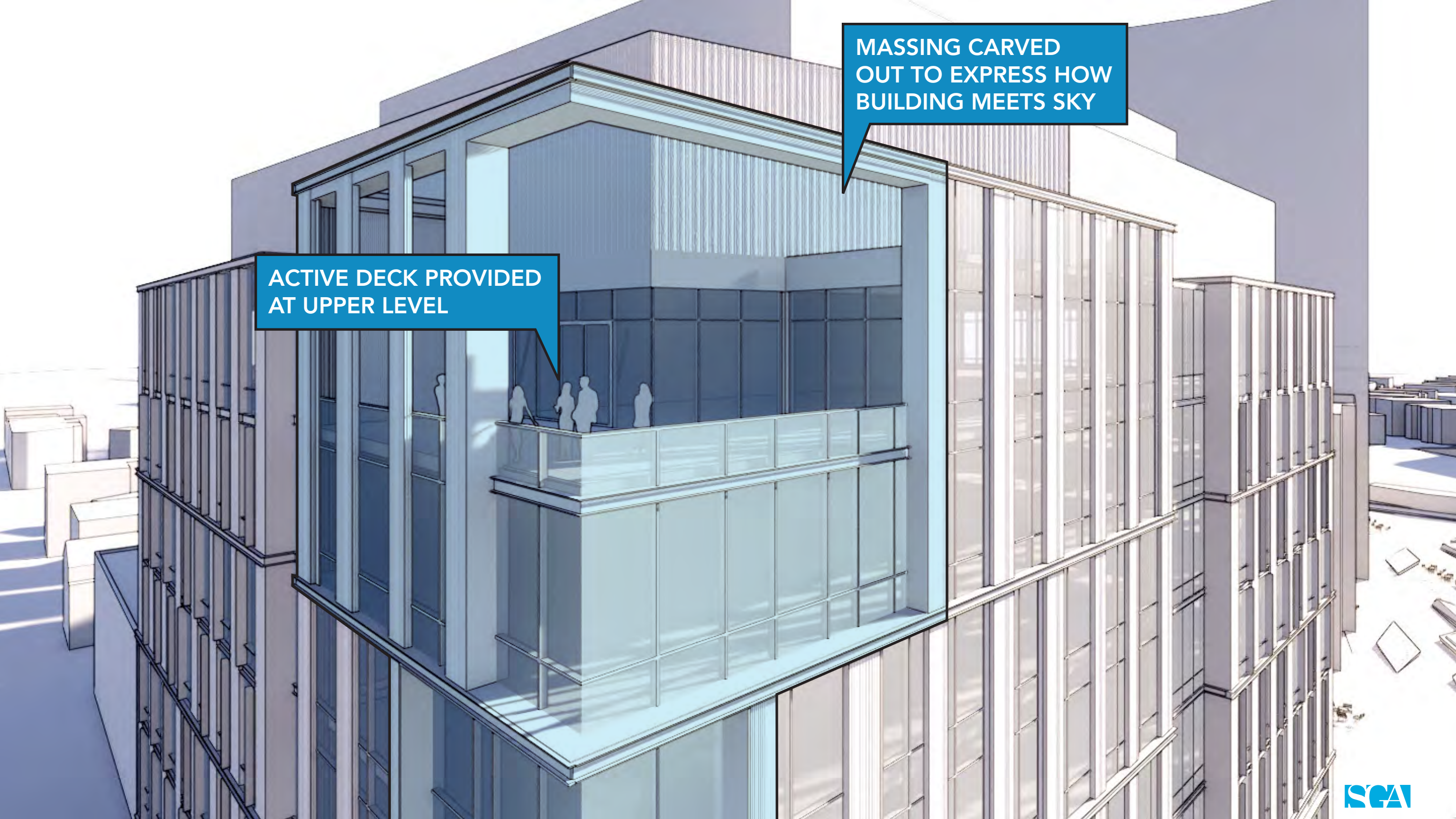






MASONRY RHYTHM MODIFIED TO  
REVEAL ADDED TRANSPARENCY





MASSING CARVED  
OUT TO EXPRESS HOW  
BUILDING MEETS SKY

This architectural rendering shows a modern building with a glass curtain wall. A prominent feature is a cantilevered upper floor, which is highlighted by a blue callout box. The building's design is characterized by clean lines and a mix of materials, including glass and solid panels. The cantilevered floor is shown with silhouettes of people, indicating its use as an active space. The overall aesthetic is contemporary and minimalist.

ACTIVE DECK PROVIDED  
AT UPPER LEVEL



VIEW FROM UNION SQUARE PLAZA





